

**TOWN OF ERIN**  
[www.erin.ca](http://www.erin.ca)

COMMUNITY  
**PROFILE**



*Country Charm*

*City Connection*



**TABLE OF CONTENTS**

Who We Are .....7  
A Snapshot..... 9  
Take A Peak .....11  
Location, Location, Location .....12  
Demographics .....14  
Labour .....17  
What We Do.....19  
Housing .....21  
Education..... 23  
Development And Planing ..... 27  
Building Permits..... 29  
Transportation .....31  
Utilities ..... 33  
Explore More..... 34  
Recreation & Leisure ..... 35  
Why Choose Erin ..... 36  
Business Advantage ..... 41  
Experience Erin..... 42

**MAYOR'S WELCOME**

Welcome to the Town of Erin, a little piece of country paradise just steps away from major cities. Comprised of a series of quaint rural villages and hamlets cradled in farmlands, our picturesque town is ready for you to call it home.

In the Town of Erin, we seek sustainable growth through responsible development. The Town of Erin's Economic Development initiatives and team are serving as a catalyst for change and expansion, keeping residents needs in mind along the way. The Economic Development team can assist your business whether it be through start-up, growth or relocation. Town staff are dedicated and will ensure your business receives the customer service you expect from a small town.

Demographically, socially and economically the Erin experience is incomparable and Erin really is "35 minutes from everywhere".

On behalf on Erin, I welcome you to our town, a friendly place where you will feel at home. Whether you're looking to relocate or start a business here in Town, I invite you to come and enjoy everything the Town of Erin has to offer.

Al Alls, Mayor



*Everything  
a business needs  
can be found  
right in Town*



## WHO WE ARE

The Town of Erin is located 80 Kilometers north west of Toronto, offering small Town charm, with big city connections. Comprised of the Villages of Erin and Hillsburgh, and the Hamlets of Ballinafad, Brisbane, Cedar Valley, Crewson's Corners and Orton. The residents, workforce, and geographic location of the Town create a perfect setting to live, work and play.

The Town is actively seeking to fill vacant industrial and commercial properties. Increasing opportunities for resident and businesses are expanding the Town's economic base. The Industrial Park is actively seeking, and attracting new industries and businesses. Competitive tax rates, accessibility to transportation and a geographically appealing location make Erin's Industrial Park an ideal location for businesses. The Town of Erin offers many professional, medical, financial and social opportunities. Resources are abundant in Town with real estate, educational, recreational, utility and communication services located locally.

The Town of Erin is in Southern Ontario, the most industrialized area in Canada. The Town seeks to give businesses the best of both worlds: a community filled with rural charm, alongside easy access to globally active business centres. The Town possesses great recreational and health facilities, a very low crime rate as well as competitive taxation rates. The Town of Erin has abundant resources, come experience the charm.

### TOWN OF ERIN, ECONOMIC DEVELOPMENT PARTNERS

County of Wellington	Economic Development Council of Ontario (EDCO)
Wellington Waterloo Community Futures (WWCF)	Economic Development Association of Canada (EDAC)
Workforce Planning Board (WPB)	Rural Ontario Municipal Association (ROMA)
Headwaters Tourism	Ontario Ministry of Agriculture, Food and Rural Affairs (OMAFRA)
Festivals and Events Ontario (FEO)	Business Centre Guelph-Wellington
Central Counties (RTO6)	Innovation Guelph
Regional Tourism Organization 4 (RTO4)	Erin Business Improvement Area (BIA)
Credit Valley Conservation (CVC)	Let's Get Hillsburgh Growing (LGHG)
Grand River Conservation Authority (GRCA)	East Wellington Chamber of Commerce (EWCC)
Elora Cataract Trailway Association (ECTA)	
Greenbelt Foundation	

*Open, accessible,  
and transparent  
local government  
allows unrestricted  
business practises.*



## SNAPSHOT

**12,490**  
2016  
Population  
(estimate)



**\$144,063**  
Average  
Family  
Income



**\$576,460**  
Average  
House  
Sale Price



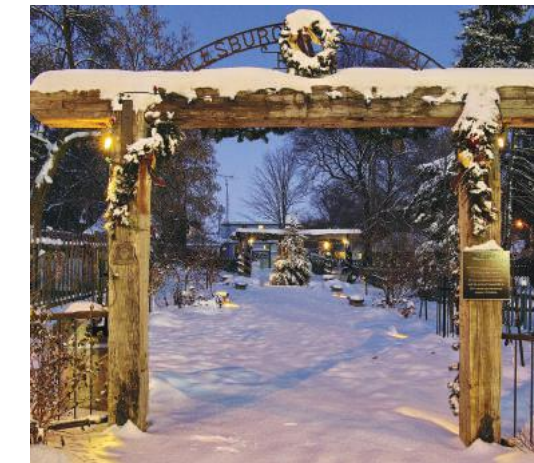
**85%**  
of Residents  
have a  
Certificate,  
Diploma  
or Degree



**2.98%**  
Unemployment  
Rate



**76.32%**  
Labour Force  
Participation  
Rate



Downtown Village of Hillsburgh



Downtown Village of Erin—McMillan Park

**Average Monthly Shelter Cost: \$1,575**

**80%** of residents spend less than **30%** of total household income on shelter costs

**71%** of Erin residents fall in the **top half** of the Canadian distribution  
of adjusted after tax family income

## REASONS WHY YOU SHOULD INVEST

- Open, accessible and transparent local government
- Established municipal infrastructure to accommodate business and residential needs
- Affordable land, labour, energy and other business costs
- Convenient transportation access to markets and customers
- Array of recreational and cultural opportunities
- Vibrant and strong downtown village core
- Availability of development opportunities
- Enhanced lifestyle and community quality of life

*The Town of Erin  
local businesses,  
emergency services  
and municipal staff  
work for you, to help  
you experience all of  
the Town's charm.*



## TAKE A PEEK

### MUNICIPAL SERVICES

The Town of Erin's municipal office is the administrative centre for the Town. Town departments offer a wide range of services for the public to meet the needs of residents.

### SAFETY

**Policing services** are provided by the Ontario Provincial Police (O.P.P.). Erin is honoured to be included with other members of the Wellington County community in being named Canada's safest county by MacLean's magazine in the year 2012 .

**Fire services** are provided by Erin Fire and Emergency Services , a volunteer service, consisting of two fire stations: Station 10, in the village of Erin and Station 50, in the village of Hillsburgh.

**Ambulance services** for Wellington County are provided by Guelph-Wellington Emergency Medical Service.

### HEALTH

Several state of the art hospitals are within close proximity to the Town of Erin. The hospitals in close proximity to the Town of Erin include: Fergus, Orangeville, Guelph, and Georgetown. East Wellington Family Health Team operates within the town to provide health care for residents in the Town of Erin and East Wellington County area

## UNEMPLOYMENT RATE



## HOUSEHOLD + PERSONAL INCOME



## CRIME RATE



## LOCATION, LOCATION, LOCATION



Centrally located, the Town of Erin is never far from what you are searching for. The Town is ideally located with easy access to major markets and borders, enhancing your overall business performance.

### DISTANCE TO MAJOR MARKETS

Region of Waterloo International Airport – **49km / 30mi**

Toronto Pearson International Airport – **55km / 34mi**

Downtown Toronto – **76km / 47mi**

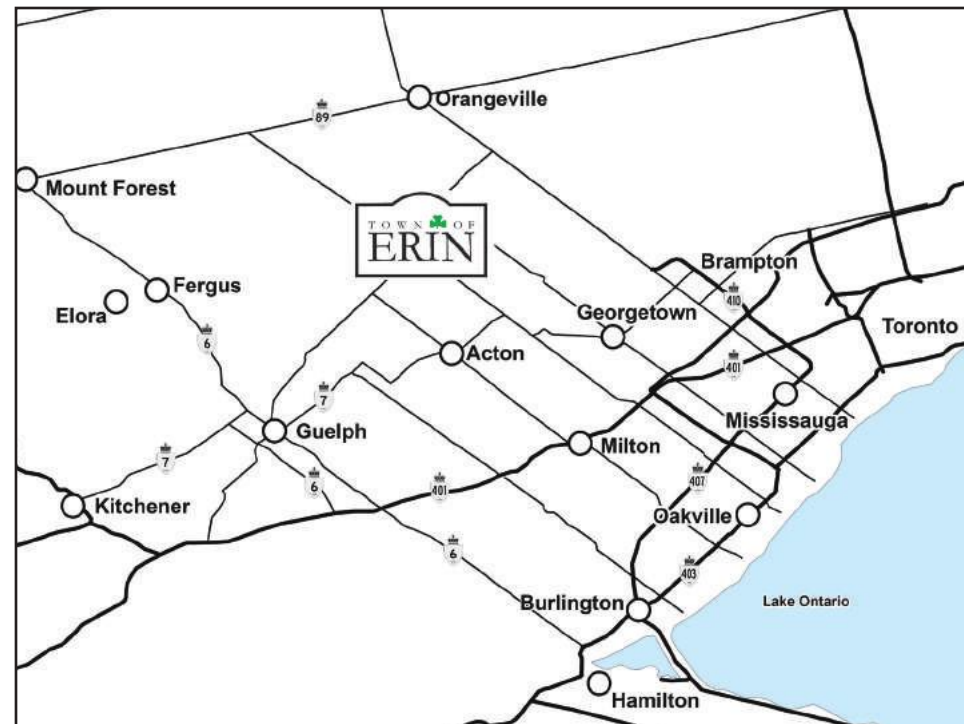
Queenston, ON/ Lewiston, NY (Border) – **146km / 91mi**

Fort Erie, ON / Buffalo, NY (Border) – **167km / 104mi**

Windsor, ON/ Detroit, MI (Border) – **329km / 204mi**

Montreal , QC – **607km / 377mi**

New York City , NY – **722km / 480mi**



Nestled between two major markets, all your business needs are in close proximity to the Town of Erin. Our central location places us a short distance from Canada's Technology Triangle, known for its research and advancement in science and technology. This allows business here unrestricted access to technological innovations. The Town's close proximity to the Greater Toronto Area (GTA) – known as a commercial, distribution and economic centre – allows easy access to the third largest financial centre in North America.

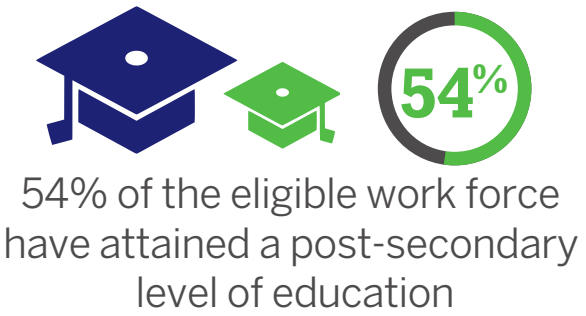
Roads, railways and highways all help lead the way to the Town of Erin. The picturesque location of the Town of Erin creates an escape from the city. Come for the weekend, or call Erin your forever home. We have rolling countryside, meandering rivers, small settlement areas and quaint village settings. Visit our amazing downtown shopping areas, unique local restaurants, play a round of golf, or attend our Erin Fall Fair. Visit the quaint "Historic Park" in Hillsburgh or take a walk along the beautiful Elora Cataract Trailway. There is a lot to see and do, or simply relax in our quiet, scenic town.

The Town of Erin is part of the Headwaters tourism region, and horse country. Step outside Toronto's back door to the Headwaters of four watersheds, the hills of the Niagara Escarpment and the headland of small- town Ontario

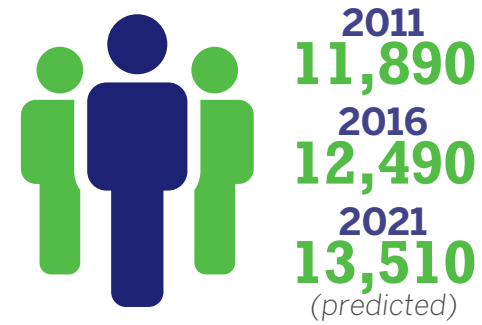
*35 minutes from  
everywhere,  
a quality of life  
like nowhere else.*

# DEMOGRAPHICS

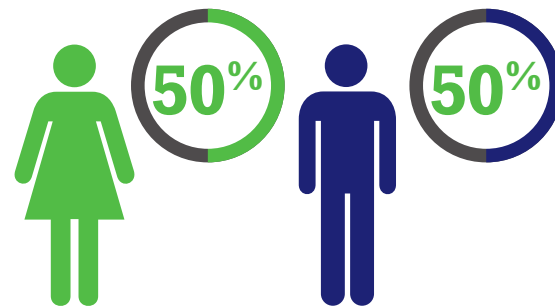
## Work Force Education



## Population



## Gender Distribution



## Working Aged Residents

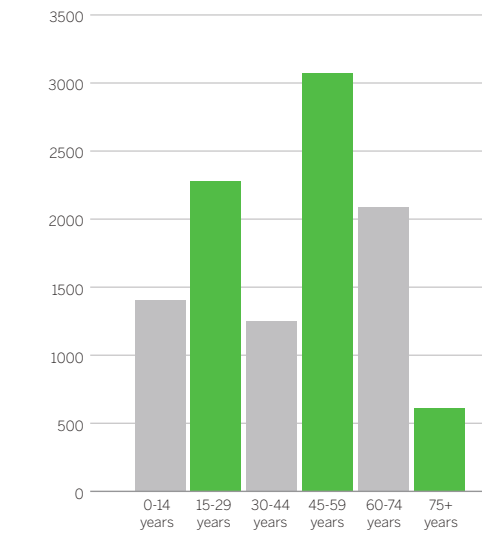


Modest growth is predicted and expected in the Town of Erin. Erin's population is diversifying as new businesses are attracted to the area. The residents and the workforce in the Town of Erin create a dynamic environment for your business to flourish and prosper. The appealing demographics of the Town of Erin make it not only a good place to work, but a great place to raise a family

Language	# of People
French	440
German	135
Polish	95
Portuguese	90
Dutch	65
Italian	65
Croatian	45
Spanish	45

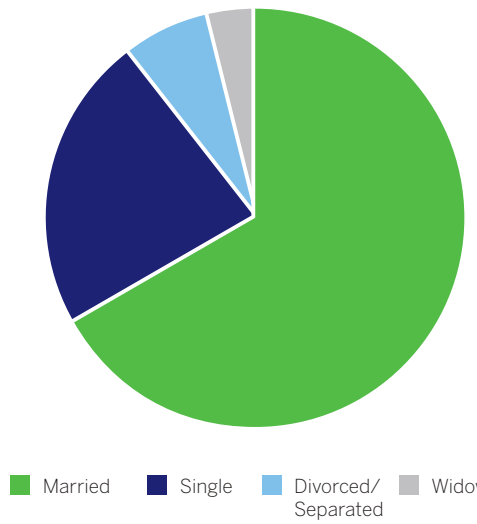
## LANGUAGE

While a large percentage of the population primarily speaks English, Erin boasts a wide array of individuals who speak other languages including French at 440. The highest amount of individuals speaking a foreign language includes German at 135; Polish and Portuguese round out the top 3 with 95 and 90 respectively. Dutch, Italian, Spanish and Croatian languages are also very common.



## AGE DISTRIBUTION

Generally, the population is within the 45 to 59 age range, making for an experienced and mature population. The population age range has progressed steadily as could be projected by an aging population. The trend is rather similar to those of other towns and townships within the County of Wellington.



## MARITAL STATUS

High percentages of residents are legally married and this means that this community is a great draw for families and individuals of all ages.



*The Erin Industrial Park and surrounding area has vacancies that can enhance businesses economically, socially and provide a willing and able work force.*



## LABOUR

Employer	# of Employees
Denny Bus Line	120
Angelstone Farm Inc	90
Foodland	65
Town Of Erin	61
East Wellington Family Health	50

Occupation	# of Employees
Agribusiness	336
Service	227
Scientific/ Professional	183
Foundation + Structural	15

Sector	# of Employees
Manufacturing	470
Retail	359
Agriculture	353

All data provided by the County of Wellington.

### TOP EMPLOYERS

Employers with over 50 employees remain stable. New to the list includes Pintar Manufacturing, Canada's Leading Manufacturer of Quality Paint Applicators and Angelstone Farms, an international show jumping tournament venue led by Olympian Kean White. Erin consists of a higher number of businesses with less than 19 employees, consistent across Wellington County. These businesses are considered small to medium and less vulnerable to fluctuations in the economy.

### TOP OCCUPATIONS

Reflecting Wellington's diverse agricultural sector, employers interviewed in the BR+E included producers, input suppliers, manufacturers and retailers. 64% of agricultural businesses (38 companies) indicated their sector was growing with 53% expecting to expand their business within the next 18 months. Reasons cited for expansions in both manufacturing and agriculture include increasing business levels and the addition of new product lines.

### LARGEST SECTORS

Despite the market crash of 2008/2009, the Town of Erin has not witnessed many closures compared to the rest of the province. Manufacturing is still the largest sector, with Retail and Agriculture not far behind. The County is aware of manufacturers who require skilled trades and working organizations such as the Workforce Planning Board to come up with strategies that include student and job seeker employment awareness initiatives and workforce attraction.

*Small businesses are the driving economic force in the Town of Erin. The Town is open and ready for larger businesses to call Erin their home, alongside the existing smaller businesses.*



**WHAT WE DO**



**EXPANSION**

Presently, the Town of Erin is home to an abundance of small business with an average of 1-4 employees. The commercial and industrial sector is on the verge of expansion with larger businesses relocating to the Town of Erin for a multitude of benefits

**EMPLOYMENT STATUS**

Employed	<b>5,325 people</b>
Self Employed	<b>1,085 people</b>

**GROWTH**

Pintar, a manufacturer of paint applicators has relocated to the Town of Erin in 2016. Pintar is fast becoming one of the top employers in the Town with an expected 100 workers predicted when the plant is in full operation. Growth by companies such as Pintar are just the beginning of future business advancements and opportunities in the Town of Erin.

**WORKING HERE**

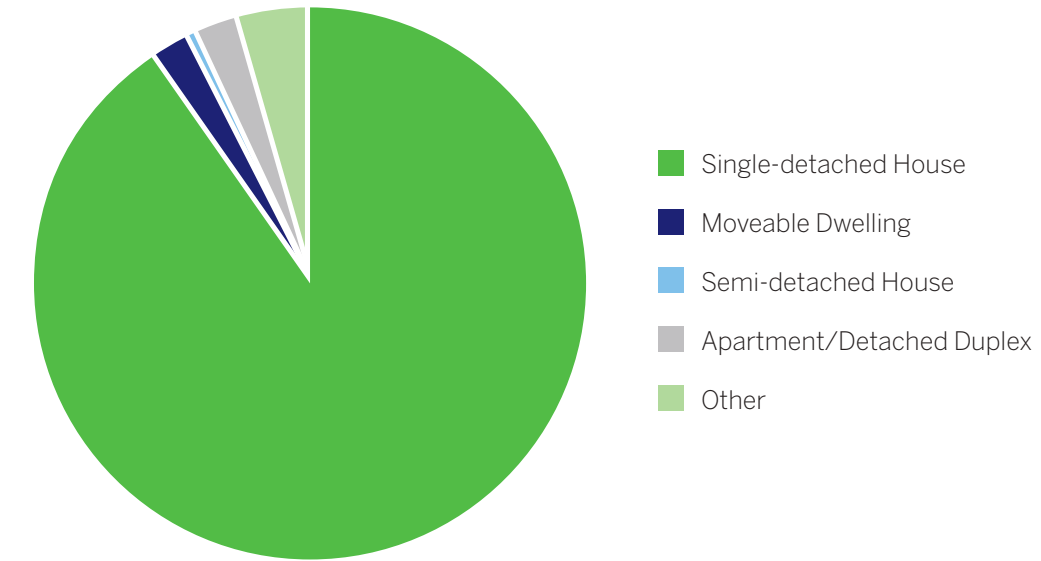
72% of residents who are employed fall in the top half of the Canadian distribution of adjusted after tax family income. The residents in the town are mature, stable and are willing to work. The high number of individuals who are self employed, in conjunction with the high average income, exemplifies the Town's prosperous labour market

<b>Average Employment Income</b> <i>Full time employment over the age of 15</i>	<b>\$78,820</b>
<b>Average Family Income (\$)</b>	<b>\$144,063</b>

*Housing in the Town of Erin is unique from surrounding urban areas — there really is something for everyone!*



## HOUSING



## DWELLINGS

The majority of residents in the Town of Erin reside in single-detached homes. These homes are typically located on picture perfect properties

**Number of occupied dwellings 3786**

## REAL ESTATE

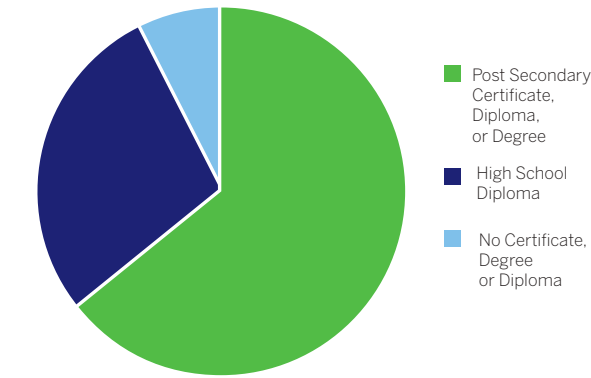
Housing prices in the Town of Erin remain strong, with a competitive real estate market. The Town offers a unique real estate experience compared to urban centres: real estate properties are characterized by large property sizes, with incomparable views. Housing in the Town of Erin is unique with a combination of modern homes and historically significant buildings. As part of projected expansion, the Town is actively seeking to diversify housing options in the Town.



*Erin is home to many educational institutions, and post secondary institutions are close by for your educational advancement.*



## EDUCATION



### NUMBER OF SCHOOLS

<b>Elementary Schools</b>	<b>3</b>
<b>Elementary Schools (Catholic)</b>	<b>1</b>
<b>High Schools</b>	<b>1</b>

*French immersion is offered in the Town of Erin from kindergarten until grade 12.*

### EDUCATIONAL ATTAINMENT

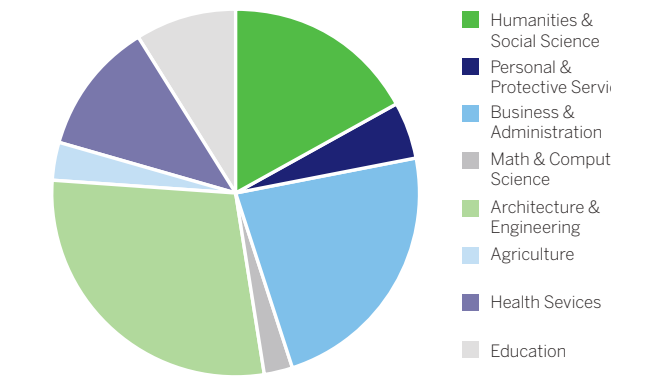
64% of the population over the age of 25 have, at minimum, a post-secondary diploma certificate or degree. The high educational attainment of residents offers a highly skilled work force. The Town of Erin is in close proximity to 3 well-ranked universities and 2 colleges. Online education programs, or a short commute allow residents unrestricted access to improve and increase their education.

### EDUCATIONAL INSTITUTIONS

There is a safe, nurturing environment waiting for you in the Town of Erin. One of our biggest advantages is that we offer the best of both urban and Community living. Residents have easy access to shopping, recreation, cultural attraction, and educational institutions. There are 4 elementary schools and 1 high school with an array of extracurricular activities including everything from sports to intellectual and artistic pursuits.

### EDUCATION BY MAJOR

The diversity of major study area highlights the variety of sectors that would prosper in the Town of Erin. Residents possess a wealth of knowledge that is invaluable to businesses



*Explore  
your options  
and build your skills  
at one of the many  
easily accessible  
higher education  
campuses nearby.*



**HUMBER COLLEGE—ORANGEVILLE**

Humber-Orangeville is a satellite campus to Humber College's main campuses in Toronto. The small campus allows a more intimate educational experience. 6 programs are offered at this location for your convenience.

[www.humber.ca/orangeville/](http://www.humber.ca/orangeville/)



**CONESTOGA COLLEGE**

Conestoga's main campus is located in Kitchener with seven satellite campuses: Guelph, Waterloo, Brantford, Ingersoll, Stratford, and two in Cambridge. A variety of different programs are offered at each respective campus.

[www.conestogac.on.ca](http://www.conestogac.on.ca)



**UNIVERSITY OF GUELPH – 34 km from Erin**

The University of Guelph offers a comprehensive range of post-secondary programs. A multitude of program are offered, such as, certificates, diplomas, degrees and post-graduate programs. Offering 90 majors, in 13 different degree programs, the University has something for everyone. Guelph's friendly environment allows it to achieve the highest graduation rate among all Canadian comprehensive universities and was ranked the best comprehensive university of Canada in 2006 and 2007.

[www.uoguelph.ca](http://www.uoguelph.ca)



**UNIVERSITY OF WATERLOO – 61 km from Erin**

The University of Waterloo offers academic programs in six different faculties and has ten faculty-based schools. The University of Waterloo is a member of the U15 research intensive universities in Canada, allowing unrestricted research opportunities. The University of Waterloo is world renowned for its cooperative education programs, allowing students to integrate their education with applicable work experiences

[www.uwaterloo.ca](http://www.uwaterloo.ca)



**WILFRED LAURIER UNIVERSITY – 60 km from Erin**

Laurier offers academic programs in 9 different faculties and over 110 different undergraduate programs. Laurier students have the ability to design their degree their way: combine majors and minors, pursue double degree, enter a joint program with other institutions – the possibilities are endless. Rated top 10 in McLean's University Ranking in 2014, Laurier has much to boast about.

[www.wlu.ca](http://www.wlu.ca)

*Development fees are competitive, and Town Planners and municipal staff are here to make the build as smooth as possible.*



## DEVELOPMENT AND PLANNING

Property taxes in the Town of Erin are competitive. Residents in the town of Erin pride themselves on the picturesque setting and invest in high caliber real estate.



### NON-RESIDENTIAL BUILDING PERMIT CHARGES

Permits apply to: Assembly, Institutional, Business and Personal Service, Mercantile and Industrial.

#### New Construction:

Min. fee: \$2,500 up to 2,500 ft<sup>2</sup>  
 \$1.00 ft<sup>2</sup> if building exceeds 2,500 ft<sup>2</sup>

#### Major Addition & Alteration: (>\$25k value)

Min. Fee: \$2,000 up to 2,500 ft<sup>2</sup>  
 \$0.80 ft<sup>2</sup> if building exceeds 2,500 ft<sup>2</sup>

#### Minor Additions & Alteration: (<\$25k value)

Min. Fee: \$750 up to 2,500 ft<sup>2</sup>  
 \$0.30 ft<sup>2</sup> if building exceeds 2,500 ft<sup>2</sup>

### BUILDING PERMITS ISSUED

**2013** 204 Permits  
**2014** 234 Permits  
**2015** 259 Permits  
**2016** 285 Permits

### NON-RESIDENTIAL BUILDING PERMIT FEES

Minimum Fee: \$2,200 up to \$2,550 ft<sup>2</sup>  
 \$0.88 ft<sup>2</sup> if building exceeds \$2,550 ft<sup>2</sup>

### COMMUNITY IMPROVEMENT PLAN (CIP)

The Town of Erin is moving forward with a town wide Community Improvement Plan (CIP). This CIP is the plan or framework to improve, restore, redevelop, and rehabilitate public and private properties. It will be used to stimulate economic development, encourage and support the growth of new business, assist with revitalization and beautification and ensure that the Town of Erin is seen as a business friendly community and that we are "Open for Business"

*Come build  
your dream home  
in the Town of Erin  
and experience the  
rural living.  
We have big city  
knowledge,  
small Town  
customer service.*



**NON-RESIDENTIAL: NON-URBAN**

Town of Erin:	<b>\$ 4.23 ft<sup>2</sup></b>
County of Wellington:	<b>\$ 1.87 ft<sup>2</sup></b>
Total per ft <sup>2</sup> :	<b>\$ 6.10</b>

**RESIDENTIAL: NON-URBAN**

Town of Erin:	<b>\$ 10,660</b>
County of Wellington:	<b>\$ 2,948</b>
Education fee:	<b>\$ 1,884</b>
Total per ft <sup>2</sup> :	<b>\$ 15,492</b>

**COMMERCIAL & INDUSTRIAL: URBAN**

Town of Erin:	<b>\$ 5.95 ft<sup>2</sup></b>
County of Wellington:	<b>\$ 1.87 ft<sup>2</sup></b>
Total per ft <sup>2</sup> :	<b>\$ 7.46</b>

**RESIDENTIAL: URBAN**

Town of Erin:	<b>\$ 13,940</b>
County of Wellington:	<b>\$ 2,948</b>
Education fee:	<b>\$ 1,884</b>
Total per ft <sup>2</sup> :	<b>\$ 18,772</b>

The Town of Erin's development costs are competitive with the County of Wellington, and are lower than surrounding larger towns and cities. Homes in the Town of Erin offer larger property areas than urban centres and the scenic geographic location is incomparable

*Come to the Town of Erin and enjoy your drive—avoid rush hour, and spend your time doing things you enjoy.*



## TRANSPORTATION

It's only a short drive to scenic Erin... and it's a pretty one!



### AIR

Commercial, corporate, and general aviation services are conveniently located in close proximity to the Town of Erin. Located just 45 minutes from Canada's largest international airport, Toronto Pearson International, allows businesses a convenient personal or commercial travel service. 40 minutes from the Town is the smaller scale Region of Waterloo International Airport.

### MAJOR HIGHWAYS

Trafalgar Road	Runs through town
Highway 401	32 km
Highway 410	35 km
Highway 407	40 km
Highway 403	45 km

### ROADS

Big city connections can be found in the Town of Erin, with major highway access only a short drive away. Highway 401, the busiest highway in the world, is a short drive from the Town of Erin. Direct access to the 401 is available through Trafalgar Road, which runs directly through the Town. The Town has a combination of paved and dirt roads, maintained by the Town of Erin Roads Department and the County of Wellington, servicing 274 km of roadway.



### RAIL

Easy access to railways can be made through the rail services offered by the Orangeville Brampton railway. The rail also offers a public excursion train to enjoy the scenery of the area. GO trains and GO buses are readily available at a variety of locations surrounding the Town, including: Georgetown, Guelph, Orangeville, Acton, Caledon.



*Enjoy the convenience of customizable utilities options and plans — created specifically to suit your business and yourself.*



## UTILITIES



### NATURAL GAS

The Town of Erin's provider of natural gas, Enbridge, offers natural gas in select urban areas within the Town. Enbridge offers a number of incentives to assist new and old companies with the supply of energy, in conjunction with the added bonus of the energy efficient improvement programs.



### TELECOMMUNICATION

The Town of Erin is well-served by 5 telecom service providers. The providers include: Bell Canada, Caneri, Internet Access Solution, Primus, Rogers, Vianet (Zing) Network Inc. Businesses have a wide variety of companies, packages, and incentives to choose from to support all infrastructure sizes and all business capacities.



### WATER

The Town of Erin owns, operates and maintains two residential drinking water systems, the Erin Municipal Water System, and the Hillsburgh Municipal Water System. Pre-authorized plans are available for payment convenience. Payment can be made monthly or quarterly, for suitability.



### ELECTRICAL POWER

Electric power is provided to the Town of Erin by Hydro One. Hydro One offers tools, incentives, and expert advice on saving energy to aid in the minimization and controlling of the costs of electric power.

## EXPLORE MORE!

*The Town of Erin is an outdoor enthusiasts playground. With hiking trails, ball diamonds, snowmobiling & horseback riding. Your lifestyle, at your pace!!*



### RECREATION

- 7 Parks
- 1 Parkette
- 1 Skate Park
- 2 Sports Fields
- 5 Tennis Courts
- 2 Ice Rinks
- 3 Ball Diamonds
- 2 Golf Courses



### EQUINE

Erin is located in Headwaters Horse Country, home to over 23,000 horses, over 2,000 horse farms and hundreds of businesses that support these horses and their owners.

### GOLF

The Town of Erin is home to 2 golf courses.



### ELORA- CATARACT TRAILWAY

The Elora-Cataract Trailway, a forty-seven kilometre trailway linking the Credit Valley Watershed to the Grand River Watershed and communities along the way. The trail passes through the Villages of Erin and Hillsburgh, placing the Villages on one of the worlds premier scenic routes. Bring your family or your friends, and enjoy a walk, run, bike, horseback ride or snowmobile ride on this beautiful trail system in our backyard. You can stay for a night or even weekend at one of the beautiful Bed and Breakfast locations along the trail.



### ERIN INDOOR RECREATIONAL CENTRE

The Hillsburgh, Erin and District Soccer Club (HEADS) has joined forces with the Erin Agricultural Society (EAS) to develop the newest recreation facility in the area, the Erin Indoor Recreation Centre (EIRC), an indoor sports facility. With a field measuring 110 x 60 feet, an abundance of indoor recreational activities are enjoyed daily.



### CENTRE 2000

A unique multi-purpose facility housing the Erin District High School, Erin Public Library, Arena, Dental Office, Station Road Nursery School, Seniors Room, Theatre, Baseball diamond, Tennis Courts, Soccer Field, Banquet and Meeting Room space. This multi-purpose facility is the recreational hub of the Town of Erin, and a great resource for both old and young

*Erin boasts an array of shopping with everything from housewares and home décor, to clothing and toys.*

*Country living meets boutique shopping, just outside the City.*



#### **VILLAGE OF ERIN**

Scenic vistas, quaint shops and small town charm— all awaits you in the Village of Erin.

Wander the beautiful downtown, enjoy the shops, and find unique treasures that are great for gifts... or to keep for yourself! Erin boasts an eclectic array of shopping – from housewares and home décor, to clothing and toys. Country living meets boutique shopping in this beautiful village, just outside the city.

Experience Erin's local artisans of taste as they create delicious foods incorporating local produce.

The village hosts several delicious eateries, and you can relax on the patio to quench your thirst in the summer heat.

Why not make it a full day visit, a weekend stay at one of our local Bed and Breakfast locations, or even call one of Ontario's best-kept historic downtowns your new home. Add to your adventure with cycling, hiking and horseback riding. Get active and inspired in our great outdoors.

*Contributed By: Erin Business Improvement Area*



#### **VILLAGE OF HILLSBURGH**

Located on the Elora Cataract Trailway, Hillsburgh offers a charming village experience with an abundance of local conveniences.

Hillsburgh boasts a Community Centre with complete arena, dressing room and banquet hall facilities to appease all your recreational needs. Exhibiting agricultural ingenuity, farm fresh foods are available year round through local farms.

With lasting ties to the Toronto Distillery District, historical charm can be felt through the entire village. Previously home to the very influential Toronto Gooderham and Worts families. Although the district has relocated, the history can still be felt in the town, and seen at the mill pond.

The County of Wellington is currently in the works of creating a new library facility for the Village of Hillsburgh. Located in a beautiful historic house from 1892, the new library will act as a cultural hub for the town, showcasing a breathtaking property with a pond and creating an academic resource for both old and young.



*A wonderful palate of culinary establishments, fresh groundwater and eclectic mix of historic architecture with roots to the Distillery District of Toronto.*

## WHY CHOOSE ERIN

*Quaint small town  
appeal, friendly  
people, beautiful  
country villages  
with specialty  
shops and eateries  
and the proximity  
to amenities in  
bordering cities  
and the airport.*



### **KAREN CAMPBELL, EVERDALE FARMS**

**Why Erin:** We are located in a historically rich area – a perfect spot for a community focused farm.

**Business in Erin:** The Town of Erin staff have been amazing. They are quick to respond to any query and always courteous and helpful! We love farming in Erin.

**The Best Part:** Our favorite part about doing business in Erin is the willingness of other local businesses and groups to collaborate and help on any and all projects! Everyone is really friendly and has a genuine interest in the success of all businesses in Erin, and not just their own.



### **CHRIS BAILEY: OWNER BRIGHTEN UP, CHAIR ERIN BUSINESS IMPROVEMENT AREA**

**Why Erin?:** Erin is a medium sized picturesque community that creates a stimulating environment for young entrepreneurs like myself. Having a background in both the industrial and commercial business world, Erin was the ideal location to fulfill my entrepreneurial dreams of owning and maintaining my own business.

**Business in Erin:** There is an openness to collaboration between businesses. Business owners are supportive of one another and BIA events not only help develop a sense of community, but also increase local business sales.



### **MARIA BRITTO**

**Why Erin:** I have worked in Erin and Headwaters area as a realtor for over 32 years. The Town of Erin was a big draw to myself and my family because it offered the wonderful advantage of a quaint small town appeal, friendly people, beautiful country villages with specialty shops and eateries and the proximity to amenities in bordering cities and the airport.

**The Best Part:** Erin offers great opportunity to new and existing businesses because of its proximity to large bordering communities and International airport. The residential real estate

does not last long on the market. With focus on industrial and commercial opportunities, anyone looking to set up shop in Erin will find that we are competitive and open to business... always. The draw to beautiful open spaces, countryside and wonderful people make this an ultimate destination in which to retire, raise a family, set up a business and enjoy all that Erin has to offer.



### **LAURA DEMERS, EPIPHANY**

We came to Erin originally because so many of our Elora clients lived in the area and had requested we open a store closer to them, plus, when we saw the gorgeous space that was available we just had to snap it up!

Everyone including the store owners and local residents have welcomed us with open arms and have been more than generous with their advise, help and support.

Erin is a lovely Town filled with wonderful, friendly people and our all around experience thus far has been top notch!



There are numerous opportunities for start-ups, new businesses and mature businesses to receive training and support on issues that affect the operation and continued success of your business.

The following organizations all provide training and workshops to help you grow and strengthen your business:

**Business Centre of Guelph-Wellington**

Experts in Business Startup, Early Growth and Self Employment. The Guelph Wellington Business Enterprise Centre has been helping local area business, startup, professionals and students with many of the business needs and challenges for over 10 years.

**Wellington Waterloo Community Futures Development Corporation**

The WWCFDC provides consulting, and loans to businesses and residents of rural areas of the County of Wellington and the Region of Waterloo.

**Innovation Guelph**

Fostering Innovation in Erin. Innovation Guelph is building prosperity for Community wellbeing by providing mentorship and business support programs and services to help innovate enterprises start, grow and thrive.

**Conestoga College**

The Corporate Training division of Conestoga College offers standard and customized training for businesses.

**BUSINESS ADVANTAGE**



**LET'S GET HILLSBURGH GROWING**

Formed in 2005, the committee's main responsibility is the beautification and revitalization of Trafalgar Road in Hillsburgh. Committed to demonstrating that Hillsburgh is a thriving, active business community.



**ERIN BUSINESS IMPROVEMENT AREA**

The Village of Erin BIA comprises the businesses on Main Street and associated members. The BIA works to create a perfect day for locals and visitors. The BIA helps local businesses through partnerships and hosting of events through all 4 seasons.



**ERIN ECONOMIC DEVELOPMENT COMMITTEE**

A committee appointed to advise Council in matters of economic development and prosperity. Focusing on enhancing quality of life and sustainable and responsible growth. Collaborating and forming partnerships to form a successful economic environment



**EAST WELLINGTON CHAMBER OF COMMERCE**

The East Wellington Chamber of Commerce is a non-partisan, not-for-profit incorporation which exists to serve its business members. Our mission is to support economic growth throughout the region of Erin and Guelph/ Eramosa by advocating for pro-business policies and defending business priorities at the local level.

## EXPERIENCE ERIN

### ERIN FALL FAIR

Since 1850, The Erin Fair has attracted crowds locally, nationally and internationally to experience the Town of Erin every Thanksgiving weekend. The Erin fair is an event that cannot be missed, known as “Ontario’s Preview to the Royal” for its many winners competing at the Royal Winter Fair in Toronto

### HILLS OF ERIN STUDIO TOUR

3rd and 4th weekends in September, 10am –4pm. This award winning Hills of Erin Studio Tour captures the dynamic works of professional and emerging artists and artisans who are committed to creative, original expression. The aim is to promote the arts within the area and showcase the countryside, full of charming, talented and supportive artists. Locations are various throughout the Town of Erin.

### WINDOW WONDERLAND

Take in the holiday spirit; Christmas tree lighting, horse & carriage rides, and shop specials. Stroll down Erin’s quaint main street, and enjoy our authentic Country Christmas Welcome, bursting with activity and holiday excitement. Local merchants in the Village will black out their windows to design magical and inspiring holiday displays, and the joyous creations will be revealed to all in a dramatic unveiling.

### ERIN FARMERS MARKET

Happening every summer, the farmers market features local artisans, vendors and food services. Every Friday, the farmers market opens its doors to allow residents and tourists alike to experience farm fresh, local and home- grown goodies.



# EXPERIENCE ERIN

## WWW.ERIN.CA

 Town of Erin  @TownofErin

### **Town Hall**

Corporation of the Town of Erin  
5684 Trafalgar Road,  
Hillsburgh Phone: 519.855.4407  
email: info@erin.ca

### **Economic Development**

*Economic Development Officer:* Robyn Mulder  
phone: 519.855.4407 x241  
cell: 226.820.2545  
email: robyn.mulder@erin.ca

### **Village of Erin Business Improvement Area**

email: info@villageoferin.com  
website: www.villageoferin.com

### **Village of Hillsburgh**

Let's Get Hillsburgh Growing Committee  
email: lghgcommittee@gmail.com

### **ACKNOWLEDGEMENTS**

*All material, resources and information compiled for this document is referenced on each respective page.*

*Unless otherwise indicated, all data has been provided by McSweeney & Associates Consulting.*

*This document was created by Amanda Manderson, with the assistance of Robyn Mulder. Special thanks to Martin Lamprecht, for providing photography.*

*Graphic Design provided by: Yfactor Inc.*