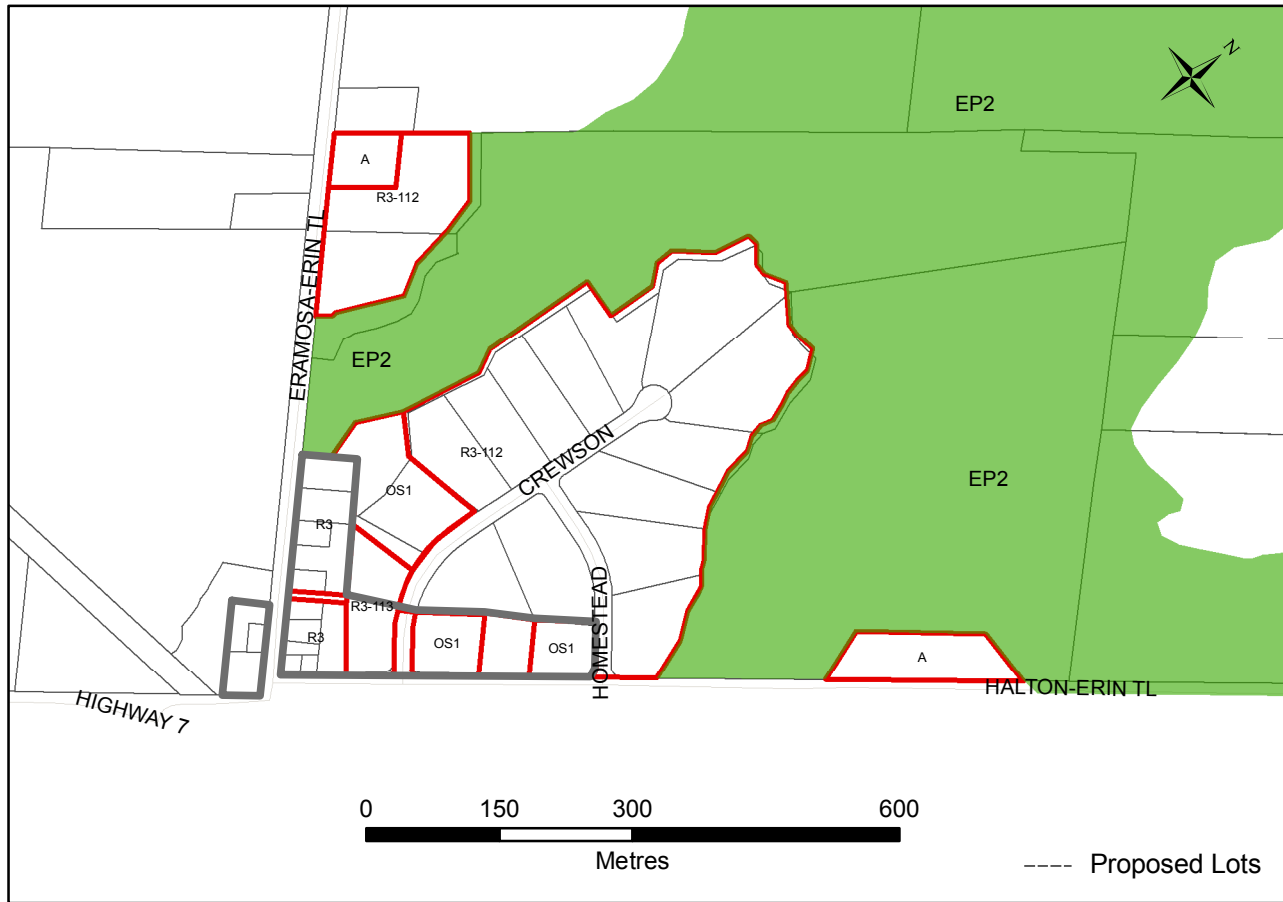


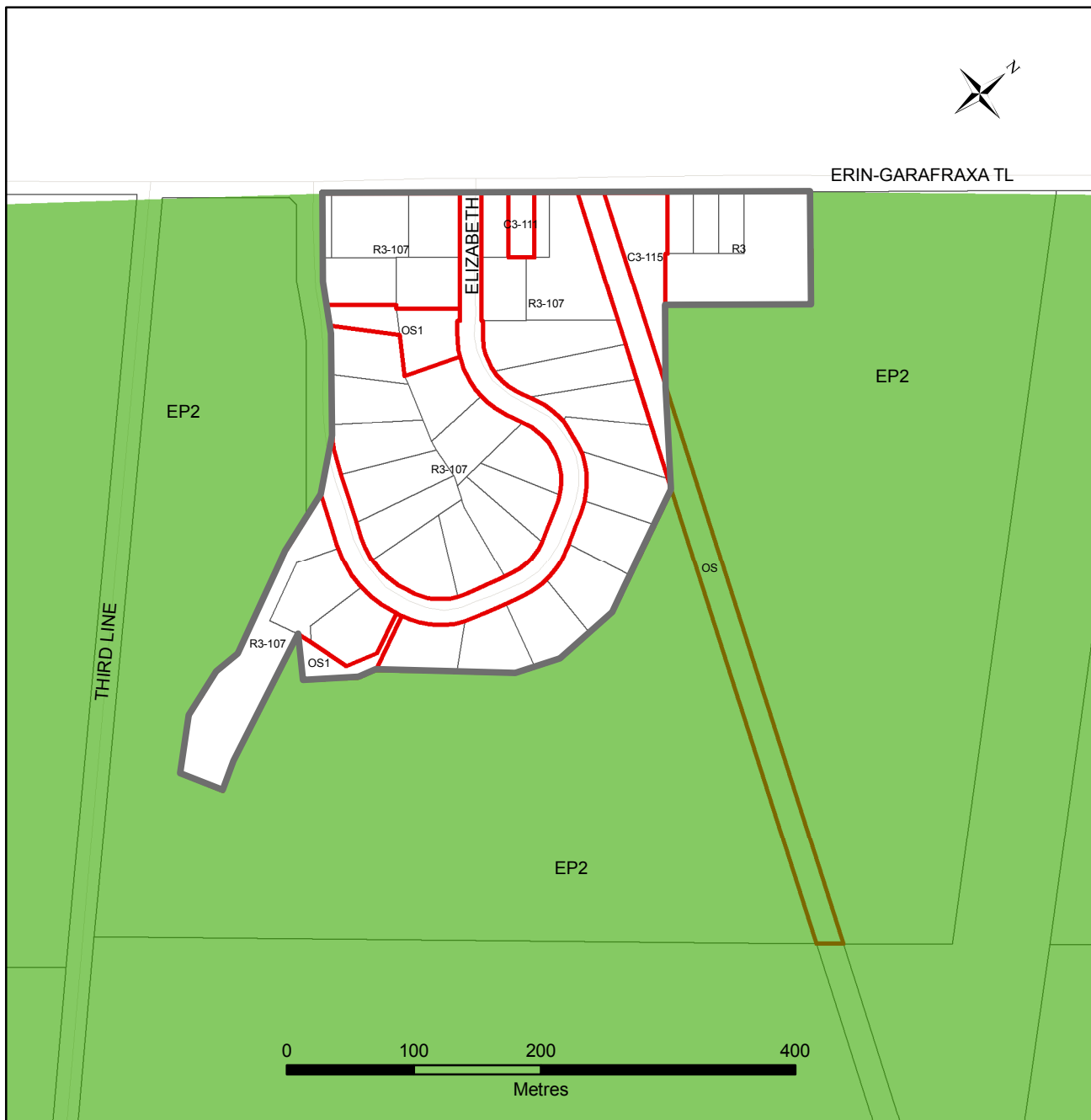
Crewsons Corners

Schedule E1



Orton

Schedule E2



Schedule "E" Town of Erin By-law No. 07-67

Created By: County of Wellington Planning and Development
Department
File: F:\Land Information System\Draw\Town_of_Erin\New Zoning Maps 2007\Schedule B - CrewsonsCorners_Orton.mxd

This is not survey data. All rights reserved.
May not be reproduced without permission.

Sources:
County of Wellington Planning and Development
Department, Teranet 2002, Upper Grand District School Board.

Date: July 9, 2009.

Go back to Overall Town of Erin Map

Legend

- Zones
- EP2

Notes:

1. All Lands are within Agriculture (A) Zone unless otherwise specified.
2. Lands shown in a green solid colour are within the Rural Environmental Protection (EP2) Zone.

