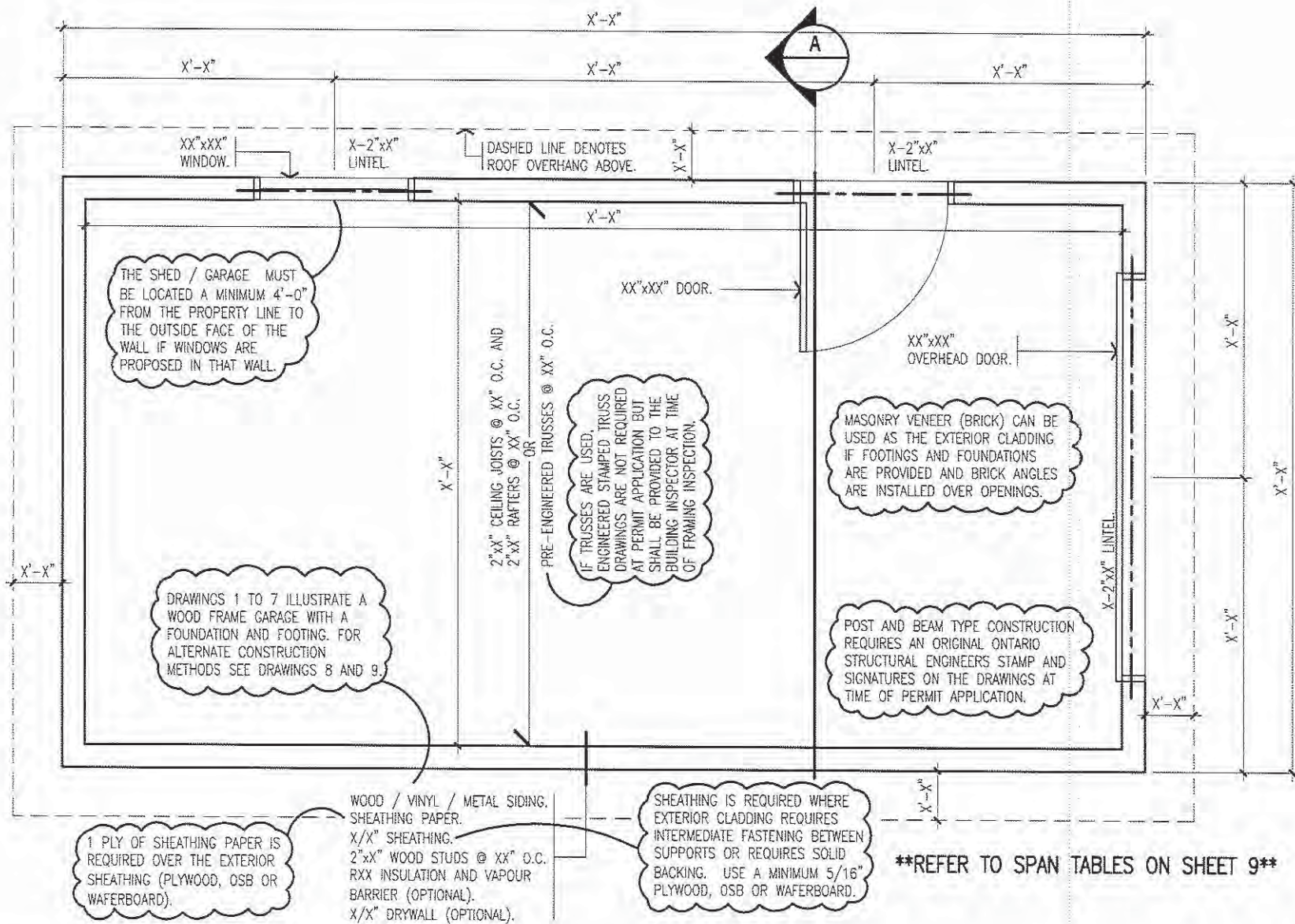


GARAGE / SHED - FOUNDATION PLAN

SCALE: 3/8"=1'-0"
DATE: SEPTEMBER, 2009

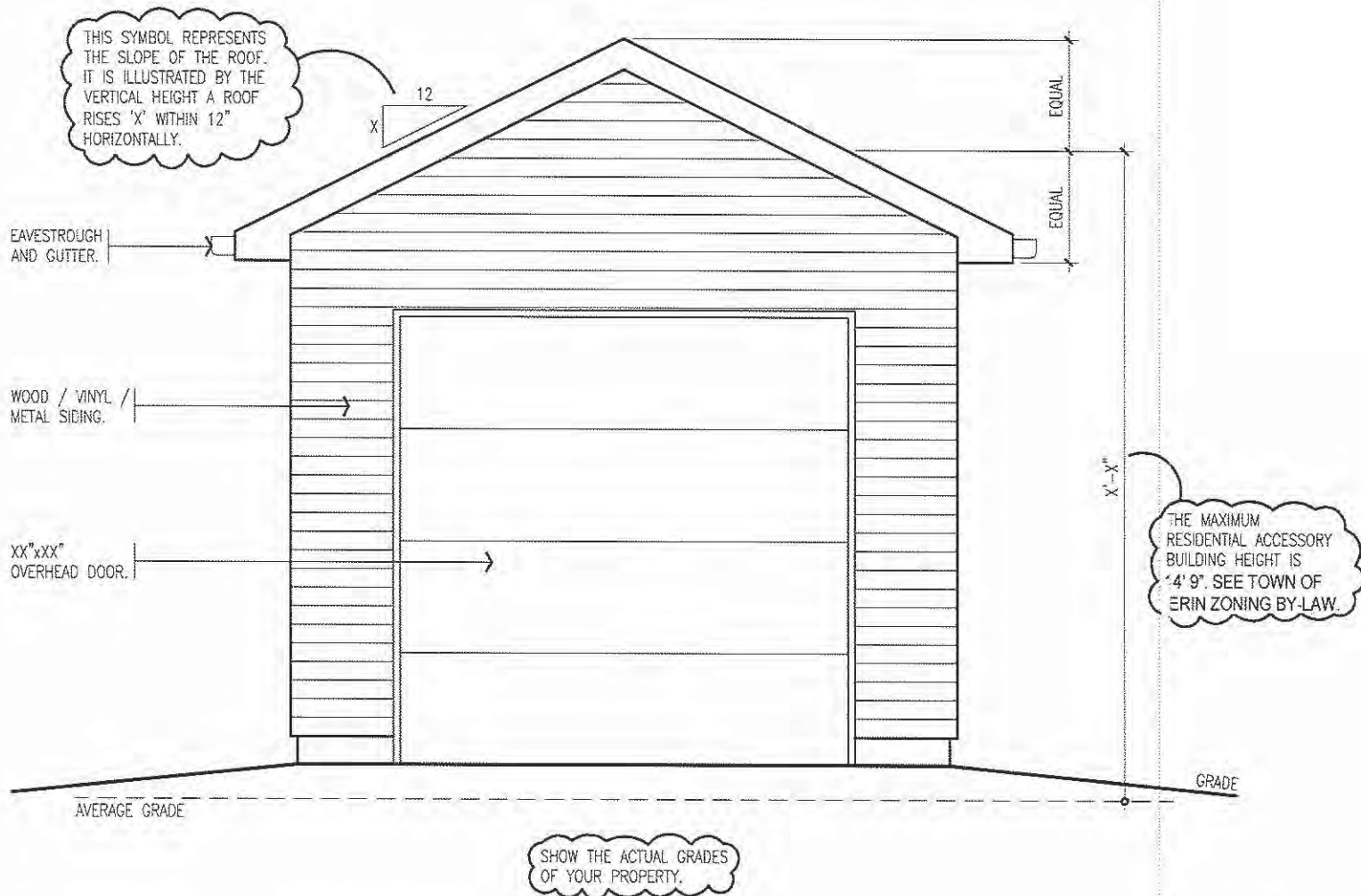
1 OF 9



GARAGE / SHED - FLOOR PLAN

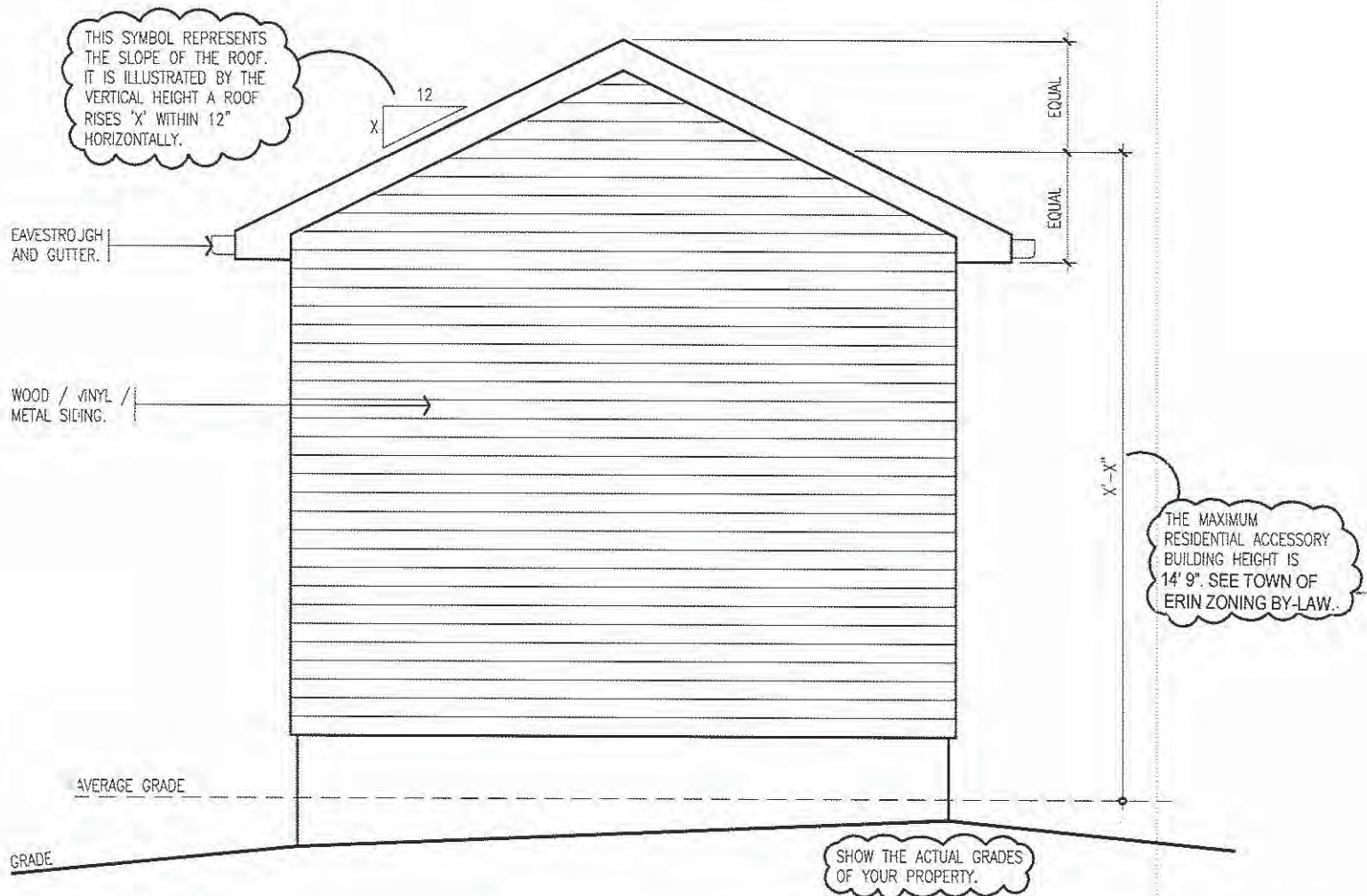
SCALE: $3/8'' = 1'-0''$
DATE: SEPTEMBER, 2009

2 OF 9



GARAGE / SHED - FRONT ELEVATION

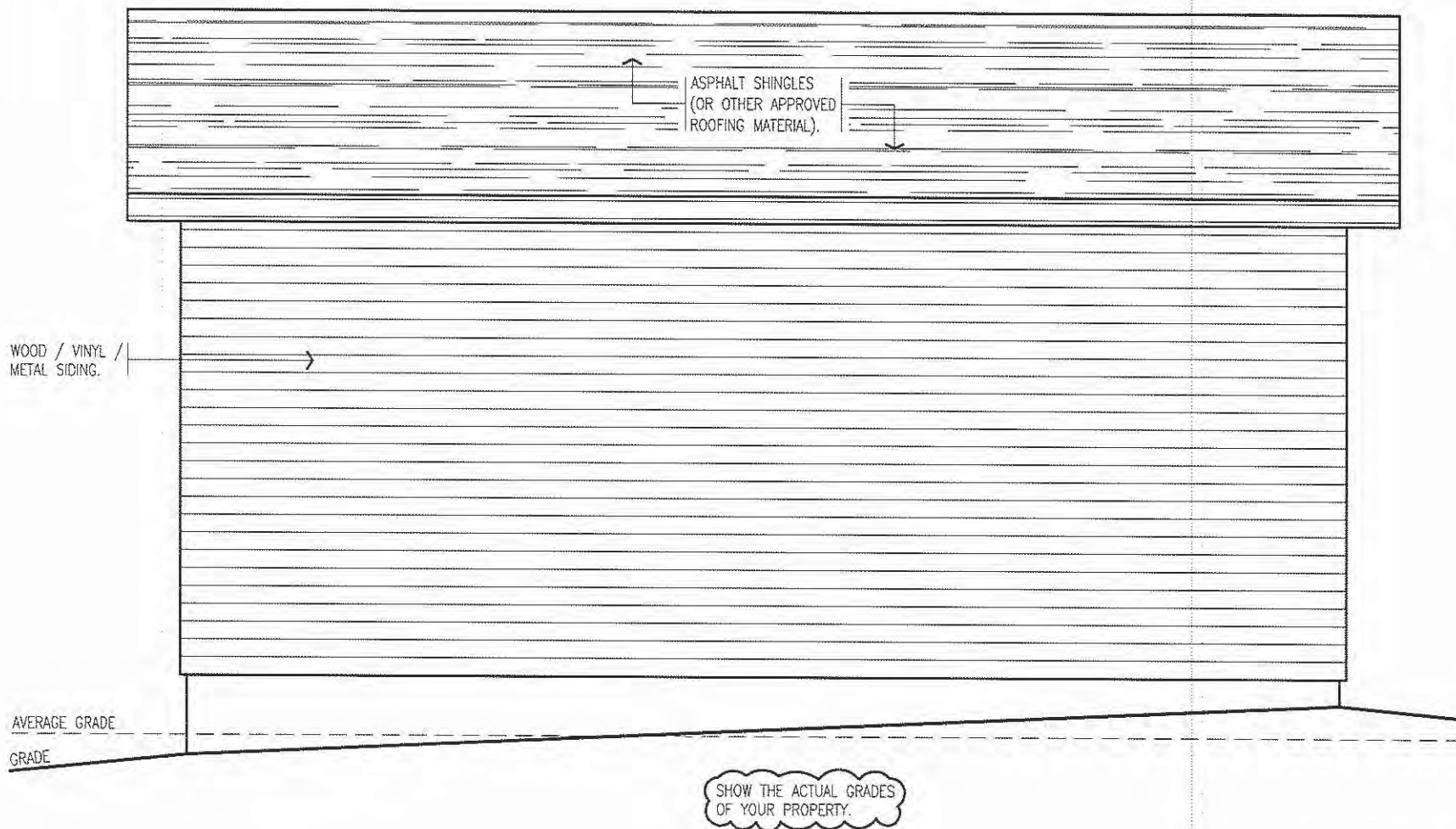
SCALE: 3/8"=1'-0"
DATE: SEPTEMBER, 2009



GARAGE / SHED - BACK ELEVATION

SCALE: 3/8"=1'-0"
DATE: SEPTEMBER, 2009

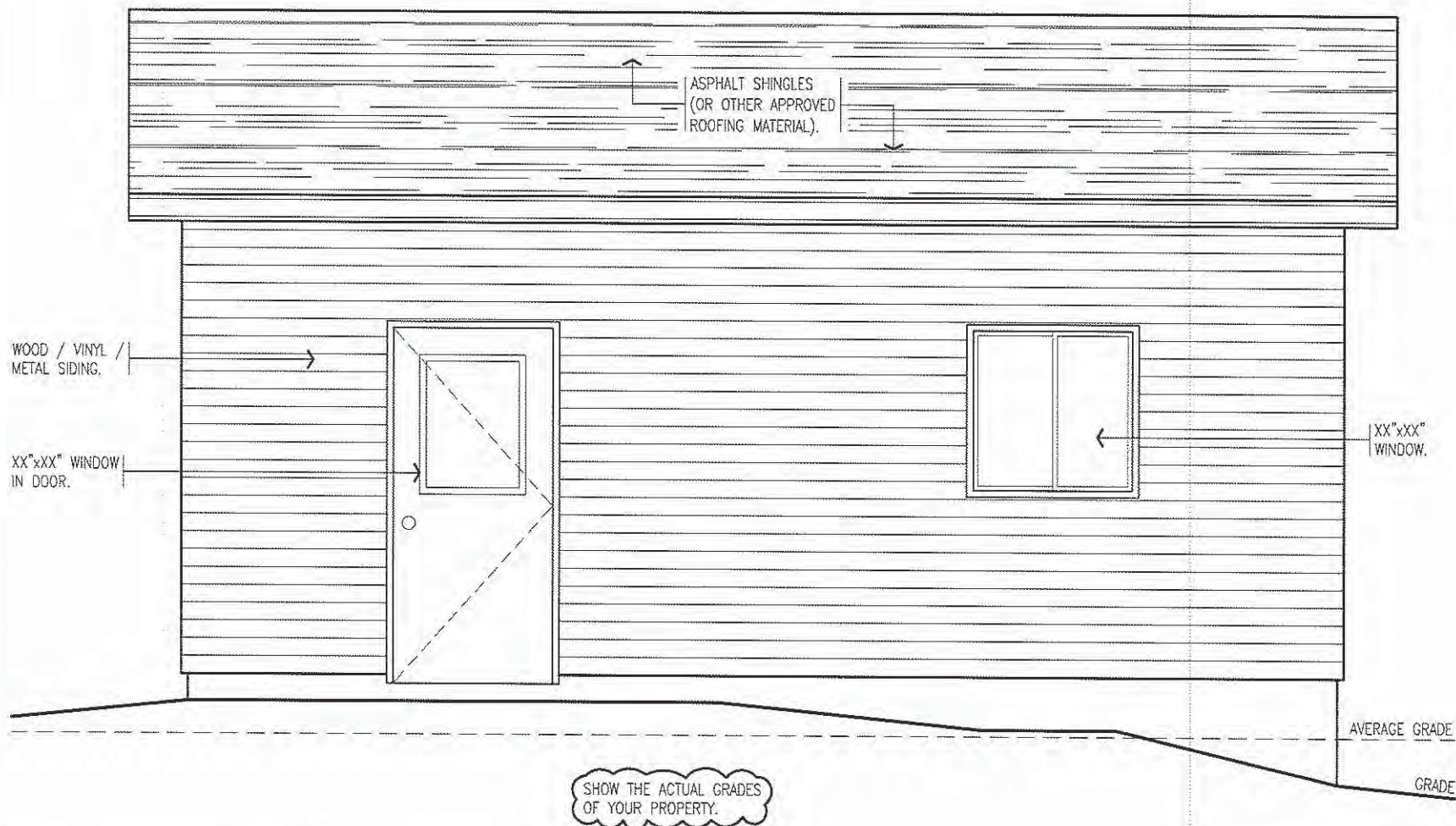
4 OF 9



GARAGE / SHED - LEFT ELEVATION

SCALE: 3/8" = 1'-0"
DATE: SEPTEMBER, 2009

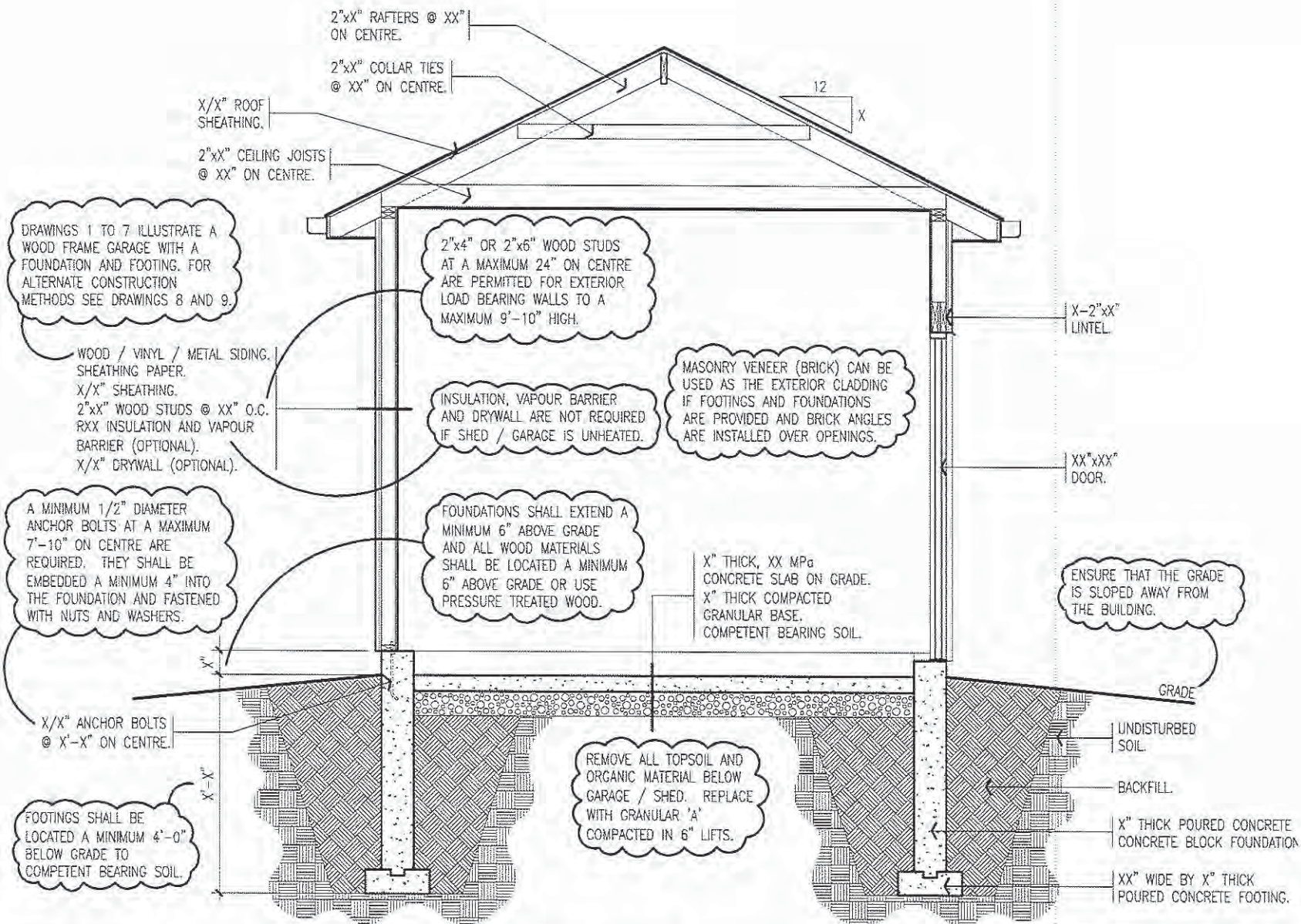
5 OF 9



GARAGE / SHED - RIGHT ELEVATION

SCALE: 3/8"=1'-0"
DATE: SEPTEMBER, 2009

6 OF 9

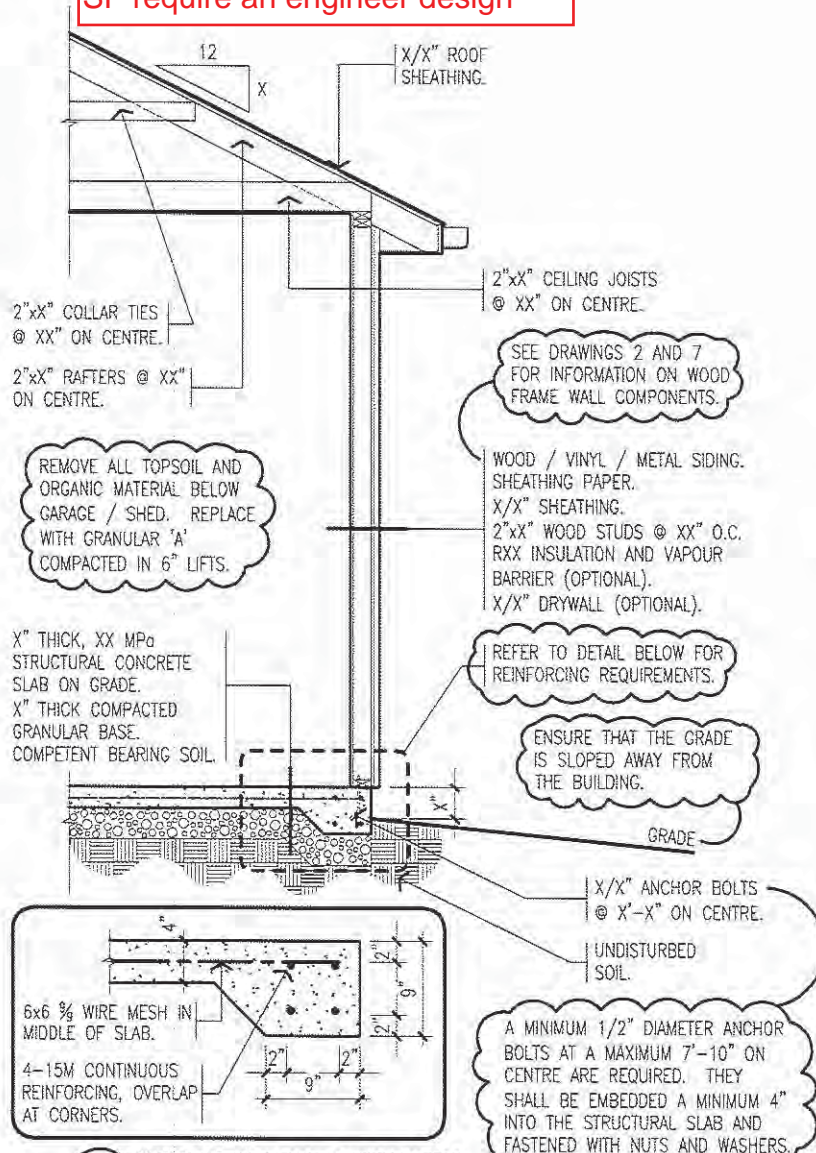


GARAGE / SHED - CROSS SECTION

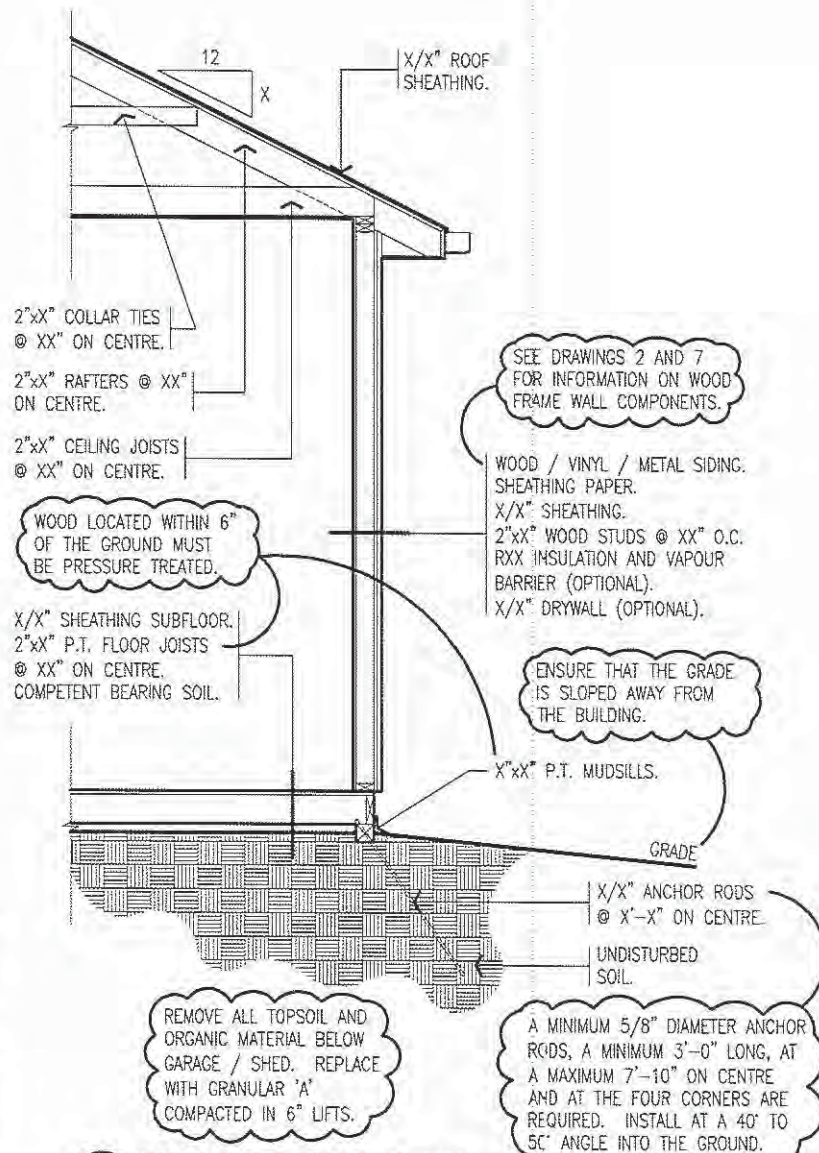
SCALE: 3/8"=1'-0"
DATE: SEPTEMBER, 2009

7 OF 9

Floating slabs greater than 538 SF require an engineer design



A WOOD FRAME AND SIDING WALL WITH STRUCTURAL CONCRETE SLAB

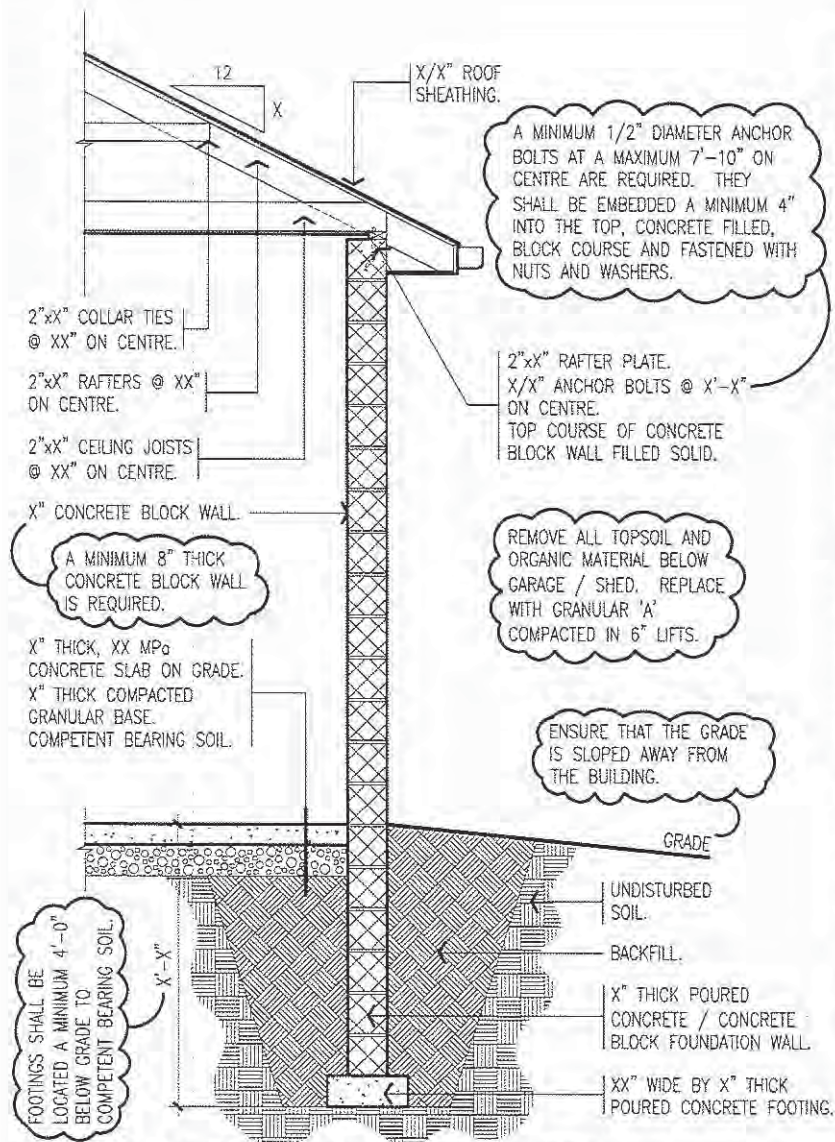


B WOOD FRAME AND SIDING WALL WITH PRESSURE TREATED WOOD MUDSILLS AND FLOOR

GARAGE / SHED - ALTERNATE CONSTRUCTION

SCALE: 3/8"=1'-0"
DATE: SEPTEMBER, 2009

8 OF 9



C CONCRETE BLOCK WALL AND FOUNDATION WITH CONCRETE FOOTING