



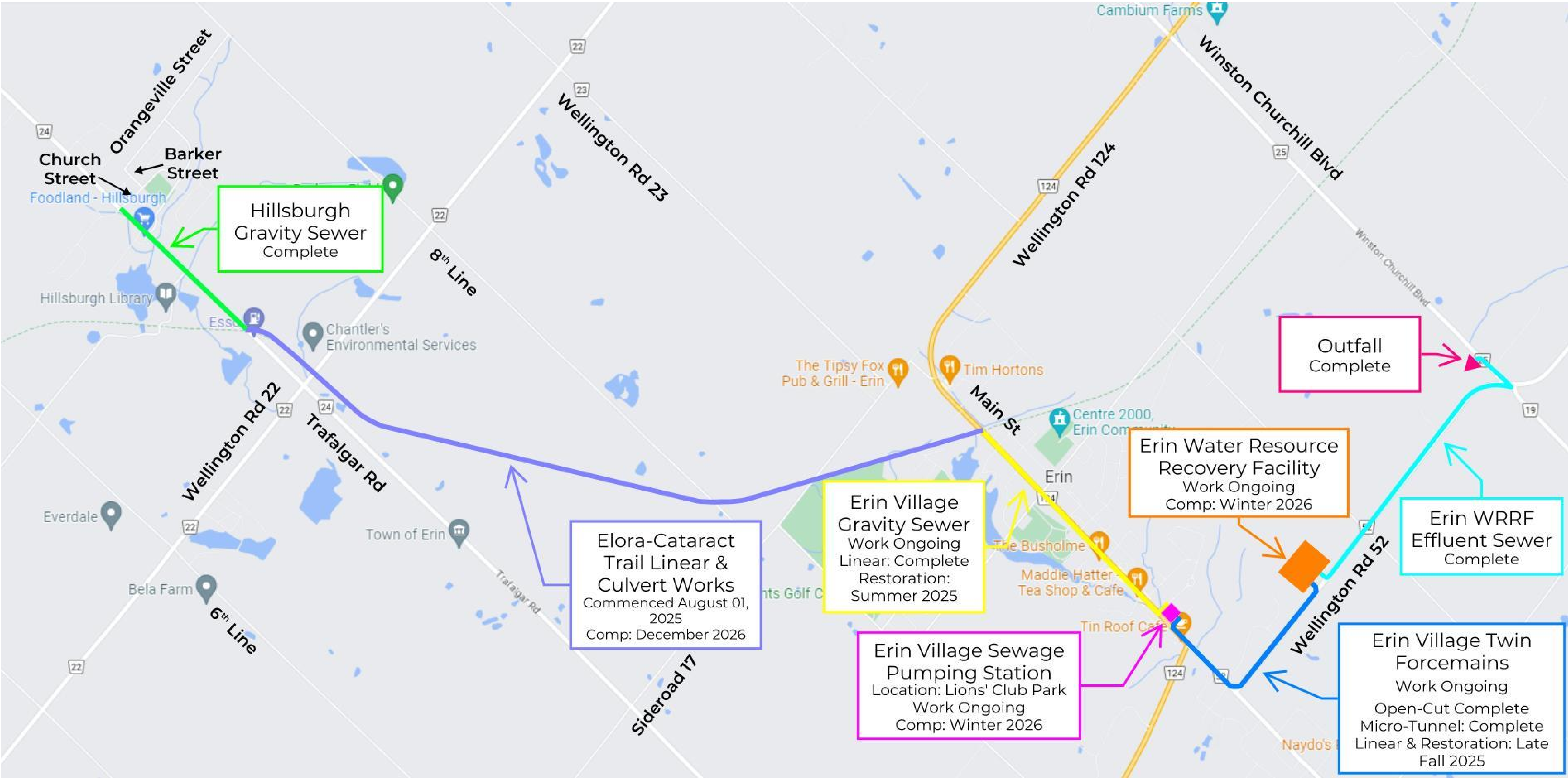
Construction Liaison Meeting

Erin Wastewater Servicing Project

Project Update

Sep 16, 2025

Construction Work Areas



Elora Cataract Trail Gravity Sewer

The construction along the Elora Cataract Trail will occur between Trafalgar Road and Main Street / Wellington Road 124, connecting the future Hillsburgh and Erin Village wastewater collection systems via gravity sewer. A new watermain connecting Hillsburgh to the water distribution system in Erin Village will also be installed, and twenty-six (26) culverts crossing the trail between Hillsburgh and Erin Village will be upgraded.

Due to the open-cut construction method required for the installation of the gravity sewer along the Trail, the Town's Contractor will have to remove trees and shrubs along the pipe alignment. Tree removals have been minimized to the greatest possible extent.

Once the gravity sewer installation is completed, the Trail pathway will be restored to a better condition and all trees that are removed will be replaced with approximately four times as many new trees. In all, approximately 20,000 trees will be planted back onto the trail and on other properties within the Town

Tree Removals

Tree removal work has been completed.

Installation of erosion control/tree protection/wildlife exclusion fencing and erosion control blankets is complete.

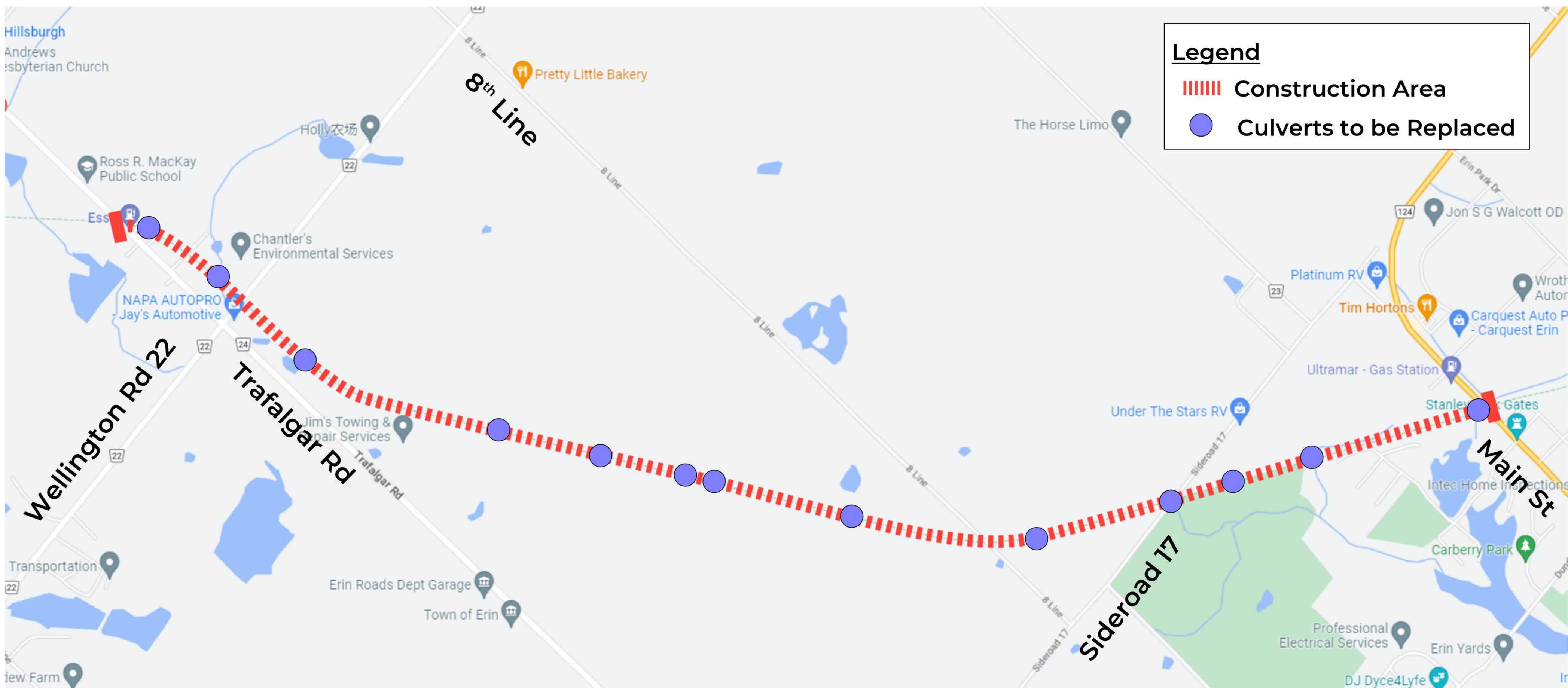
Culvert Upgrades & Linear Works

The culvert upgrades and linear work has started on August 01 2025.

It is anticipated that the culvert and linear works will be completed by late December of 2026, including all restoration.

Trail Status

The Elora-Cataract Trail is currently closed and will be closed for the duration of the culvert upgrades and linear works.



Erin Village Gravity Sewer & Twin Influent Forcemains

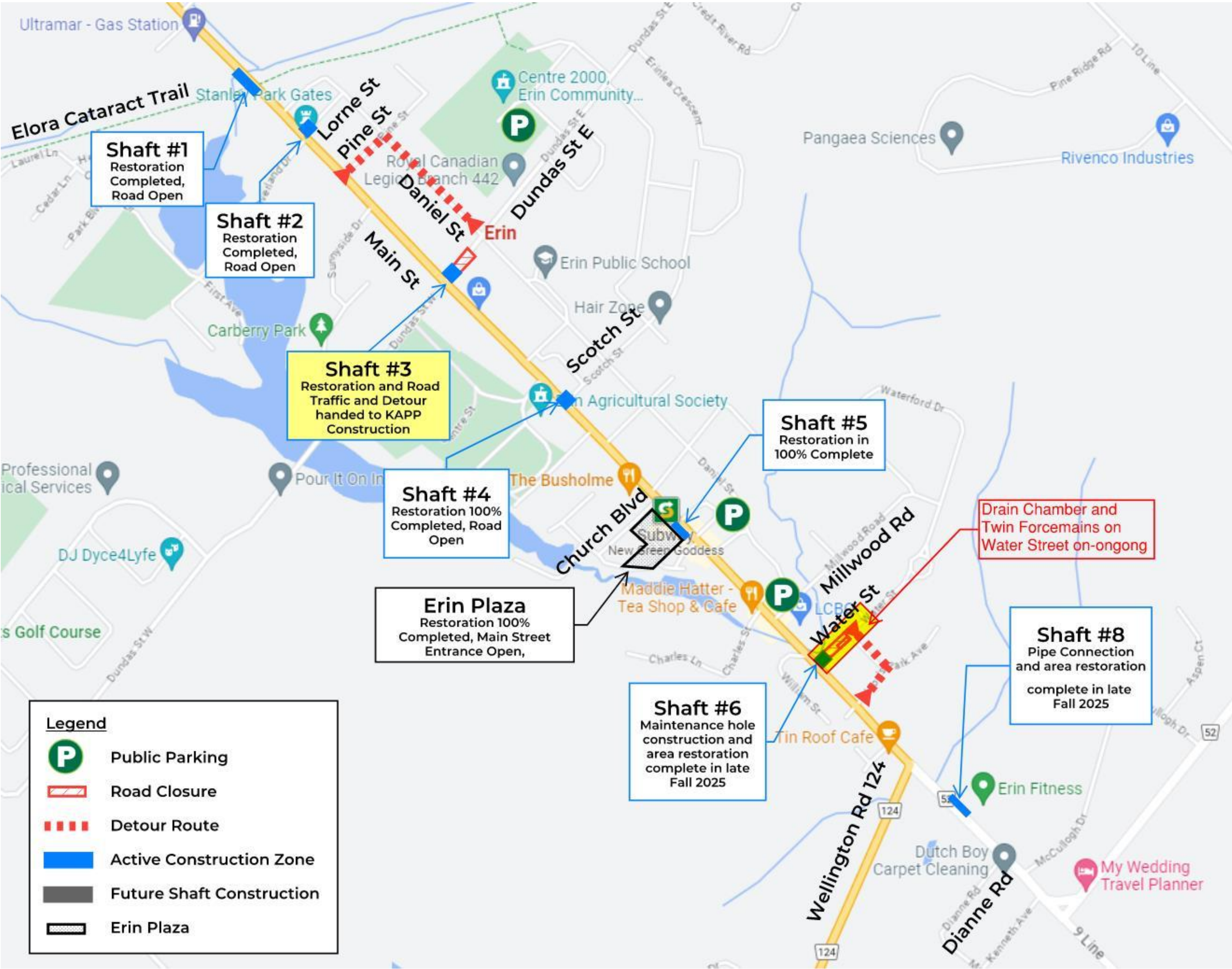
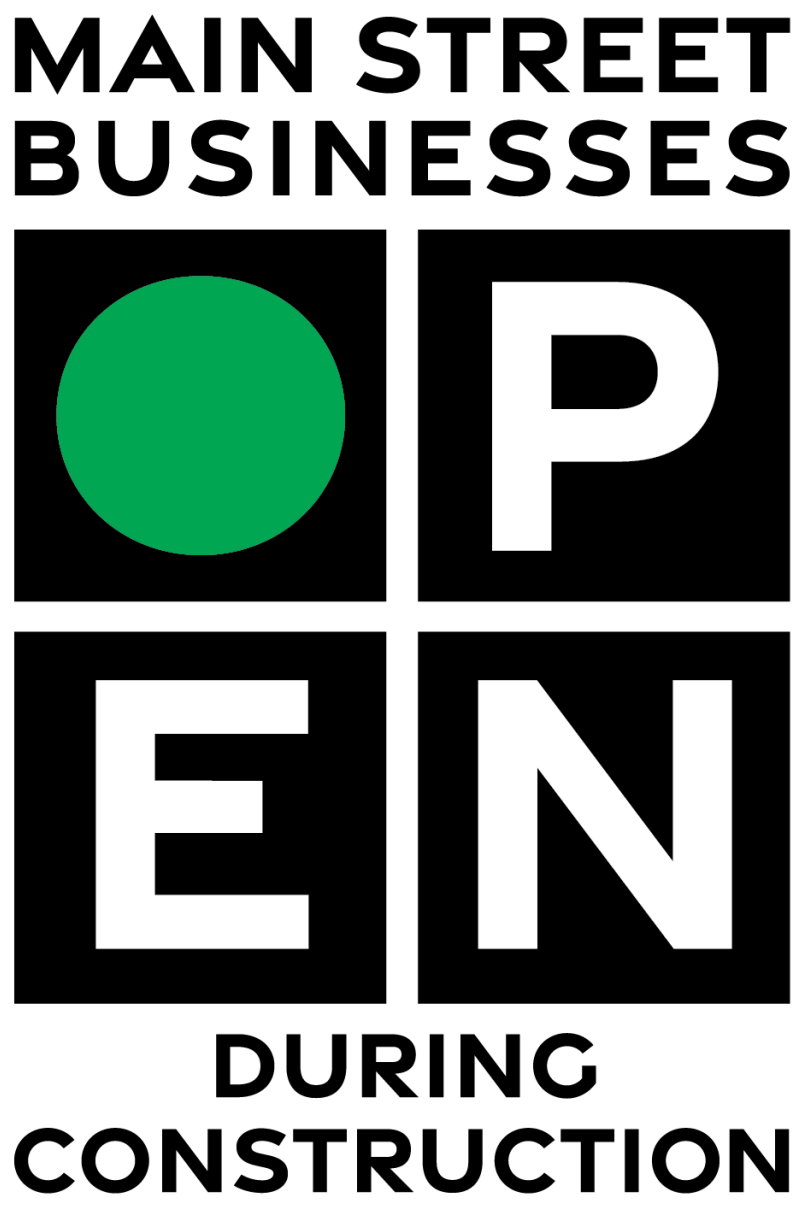
The sanitary gravity sewer and twin forcemain construction in Erin Village along Main Street between the Elora Cataract Trail and Dianne Road, and along Water Street, commenced in July 2023.

The sewer installation will utilize microtunneling, a trenchless pipe installation method. As part of this process, microtunneling shafts will be installed at specific locations along Main Street, as indicated on the map below.

Two-way traffic flow and pedestrian access will be maintained on Main Street throughout the course of construction, and road jogs will be implemented where necessary to accommodate the shaft construction. Lane or road closures may be required on certain local roads to facilitate construction. Access to local homes, businesses & emergency services will be maintained at all times.

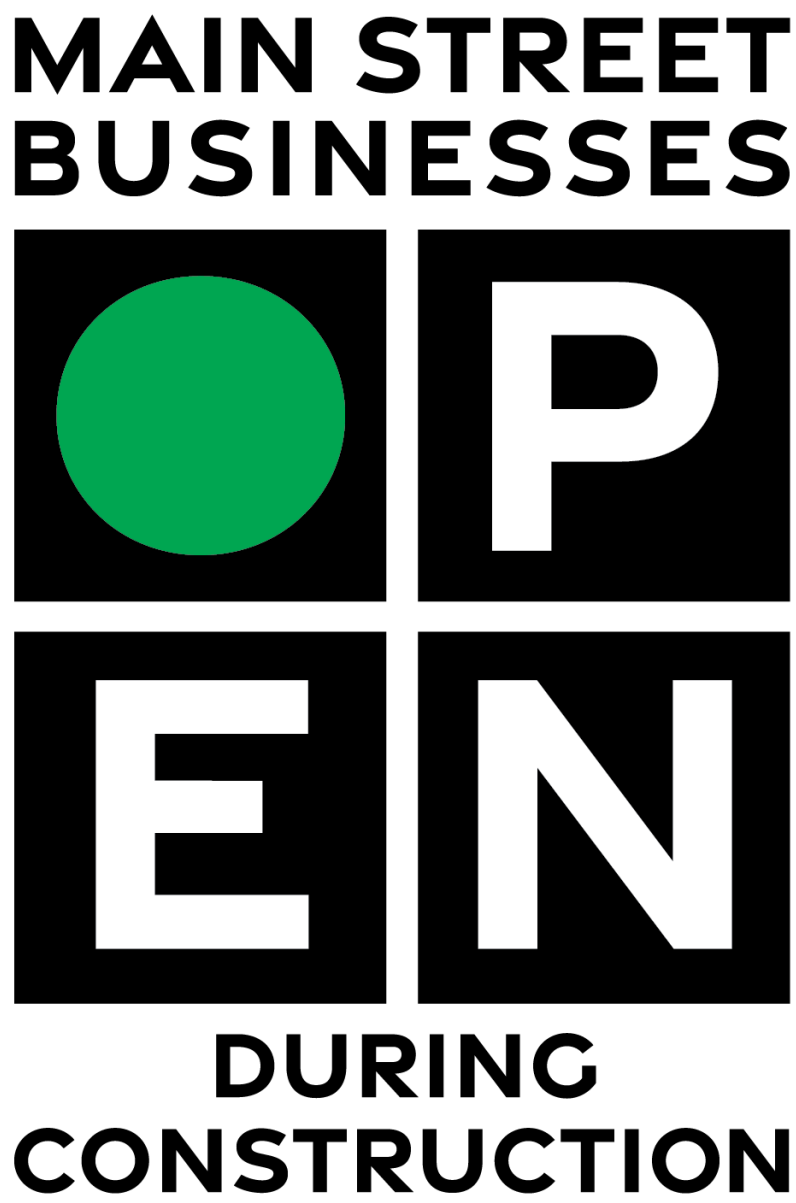
Micro-Tunneling Work

- All micro-tunneling shafts along Main St. are complete.
- All micro-tunneling work is complete. Maintenance Holes #1 - #5 are complete.
- Installation of twin forcemains between Shaft #6 and #8 started July 21, 2025 and anticipated completion this Fall 2025
- It is anticipated that all the restoration works to be completed in Fall 2025.



Erin Village Gravity Sewer & Twin Influent Forcemains

Following is the Shaft Restoration Status.



ERIN LINEAR WORKS						
MAIN ST. MICRO-TUNNELING						
SHAFTS RETORATION STATUS						
SHAFT #	LOCATION - SEE PLAN	MICRO-TUNNELLING STATUS	MAINTENANCE HOLE CONSTRUCTION STATUS	SHAFT REMOVAL	RESTORATION STATUS	ANTICIPATED RESTORATION COMPLETION
1	MAIN ST. AT TRAIL	COMPLETE	COMPLETE	COMPLETE	COMPLETE	MAY 2025 - ROAD AND SIDEWALK OPEN
2	MAIN ST. AT LORNE ST.	COMPLETE	COMPLETE	COMPLETE	COMPLETE	MAY 2025 - ROAD AND SIDEWALK OPEN
3	DUNDAS ST. E. AT MAIN ST.	COMPLETE	COMPLETE	COMPLETE	IN PROGRESS	FALL 2025 - ROAD TO REMAIN CLOSED FOR NOW
4	MAIN ST. AT SCOTCH ST.	COMPLETE	COMPLETE	COMPLETE	COMPLETE	MAY 2025 - ROAD AND SIDEWALK OPEN
5	MAIN ST. IN FROM OF PLAZA	COMPLETE	COMPLETE	COMPLETE	COMPLETE	MAY 2025 - ROAD AND SIDEWALK OPEN
6	WATER ST. AT MAIN ST.	COMPLETE	IN PROGRESS	NOT STARTED	NOT STARTED	FALL 2025 - ROAD JOG TO REMAIN FOR NOW
8	MAIN ST. SOUTH OF CREEK	COMPLETE	IN PROGRESS	NOT STARTED	NOT STARTED	FALL 2025

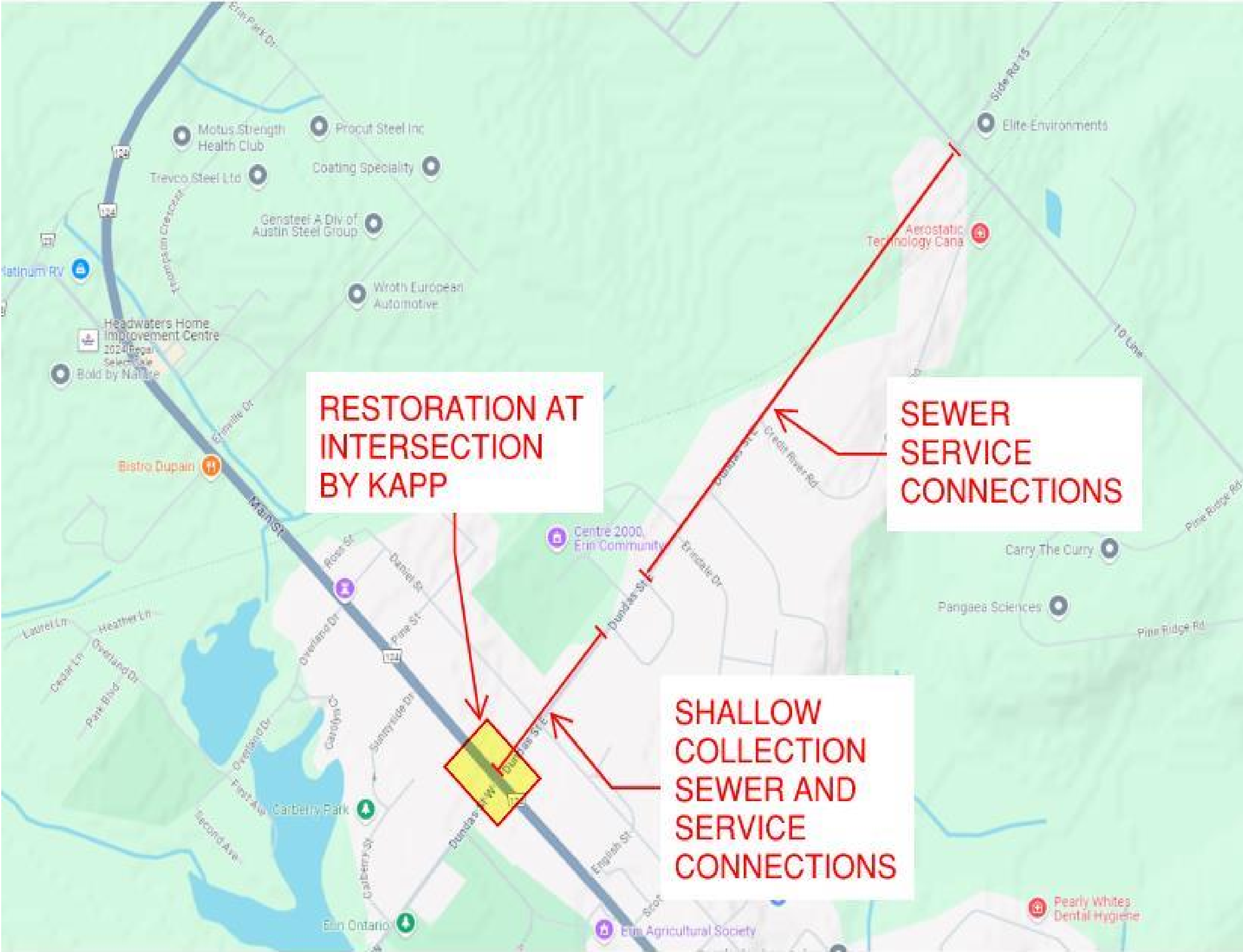
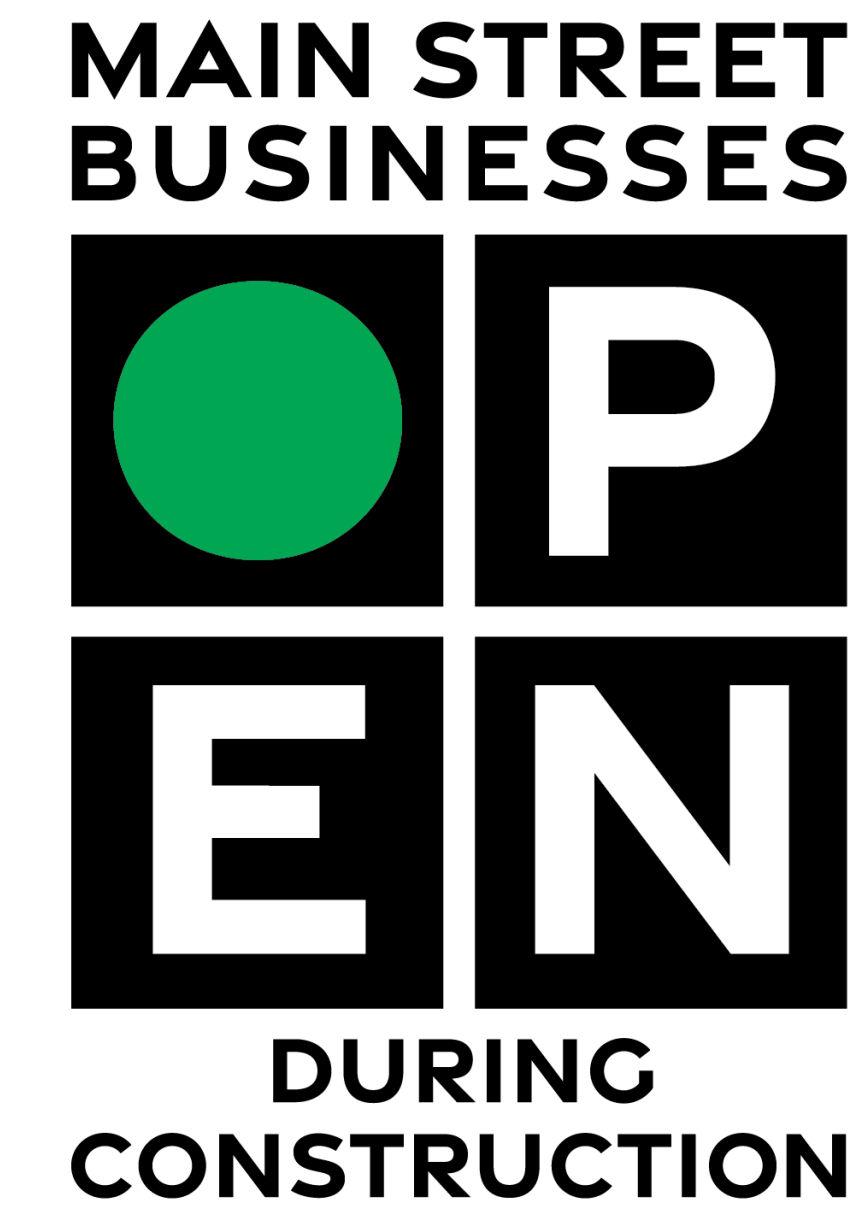
Dundas St. East Gravity Sewer Developer Construction

The sanitary gravity sewer construction in Erin Village along Dundas St. East between Main Street and 10th Line commenced this Summer 2024.

The sewer installation will utilize both micro-tunneling, a trenchless pipe installation method, and open-cut construction. As part of this process, a micro-tunneling shaft has been installed in front of the Legion parking lot with temporary lights controlling two-way traffic through this area.

Two-way traffic flow and pedestrian access will be maintained along Dundas St. East throughout the course of construction. Lane or road closures may be required at certain times to facilitate construction. Access to local homes, businesses & emergency services will be maintained at all times.

Sewer Work	The gravity sewer main along Dundas St. E. from Main St. to 10 th Line is complete.
	The installation of sewer service connections to the property lines from Credit River Road to 10 th Line will be completed Spring 2025
	The shallow collection sewer and service connections from Tomwell Cres. (W) to Main St. will be started early summer 2025
Road Work	The Dundas St. E. roadway will be reconstructed.
Completion	Work is anticipated to be done by end of summer 2025.



Erin Village Sewage Pumping Station

The Erin Village Sewage Pumping Station, located at the northeast corner of Lions' Club Park, will convey wastewater to the Erin Water Resource Recovery Facility. The sewage pumping station has been designed to complement the natural features within the park and will be secured from access by the public.

This contract includes a back-up emergency generator located on the west side of Williams Street, just north of March Street.

To complete the work in a safe manner, there will be **restrictions around the Lions' Club Park and generator work areas**. The Town's Contractor will be erecting temporary fencing around the work area; unauthorized access to the fenced area is prohibited.



Sewage
Pumping
Station

Park

Generator
Site

Fall 2025

Construction of the concrete work for the wet well is complete with the valve chamber ongoing. Work on superstructure has been completed.

The entirety of Lions' Club Park is being used as the constructin site and will be closed for the duration of construction.

Work at Generator Site is ongoing with a retaining wall and site works ongoing this Fall 2025

Sewage Pumping Station Completion

The Park and generator sites will be restored to original or better condition

Erin Water Resource Recovery Facility

The Erin Water Resource Recovery Facility is located on Wellington Road 52, west of 10th Line. The facility will treat the incoming raw wastewater from the Hillsburgh and Erin Village communities, producing treated effluent that achieves Ontario regulatory objectives and limits. The treated effluent will be discharged to the West Credit River via the effluent sewer and outfall that runs along Wellington Road 52 and Winston Churchill Boulevard.

The facility is designed to produce **one of the strictest discharge requirements in North America** and will include Canada's first municipal effluent cooling system to limit effluent discharge temperatures and ensure the coldwater aquatic habitat of the West Credit River will not be affected.

Construction work is currently in progress and is anticipated to be completed in the End of Fall of 2025.



Major Works in Progress

- Mechanical, Electrical and Process piping
- Interior Finishes and site works
- Cooling System – current status
 - Vendor shop drawing review
 - Equipment delivery in Summer 2025
 - Lead time equipment not known at this time which could affect schedule – impact not yet determined
- There is a risk that the cooling system may not be ready until the fall and the Town is exploring schedule mitigation options




Thank you for attending

All notices are also posted on the Town's Project Updates webpage

If you have additional questions, please contact us at:

 digerin@erin.ca

 (519) 855-4407 ext. 262

 erin.ca

