

NOTES:

1. THIS DETAIL DOES NOT REPRESENT ANY PARTICULAR TREE SPECIES

2. NO CONSTRUCTION ACTIVITY, GRADE CHANGE, SURFACE TREATMENT, COMPACTION, EXCAVATION OR STOCKPILING OF ANY KIND IS PERMITTED WITHIN THE PROTECTED AREA.

TREE PROTECTION PLAN NOTES

Prior to site disturbance the owner must confirm that no migratory birds are making use of the site for nesting. The owner must ensure that the works are in conformance with the Migratory Bird Convention Act and that no migratory birds or nests will be impacted by the proposed work. It is the applicant's responsibility to disclose potential tree injury of trees on shared property lines with their neighbours. Should such trees be injured to the point of instability or death the applicant may be held responsible for removal and such issues would be dealt with in civil court or through negotiation.

TREE PROTECTION ZONE: No construction activity including grade changes, surface treatments or excavations of any kind is permitted within the area identified on the Tree Protection Plan or Site Plan as a Tree Protection Zone (TPZ). No root cutting is permitted. No storage of materials or fill is permitted within the TPZ. No movement or storage of vehicles or equipment is permitted within the TPZ. Grade changes are not permitted within established TPZ. The area(s) identified as a TPZ must remain undisturbed at all times.

TREE PROTECTION BARRIERS: Tree protection barriers must be installed at the dripline plus 1 m of the trees to be protected using all fence offered to page wire fence supported on metal T-bars. All supports and bracing to safely secure the barrier should be outside the TPZ. All such supports and bracing should minimize damage to roots outside the TPZ.

ARBOCULTURAL WORK: Any roots or branches which extend beyond the TPZ indicated on this plan which require pruning, must be pruned by a Certified Arborist. All pruning of tree roots and branches must be in accordance with good arboricultural standards. Roots located outside the TPZ that have received approval from the City/Town to be pruned must first be exposed by hand digging or by using an air spade. This will allow a proper pruning cut and minimize tearing of the roots.

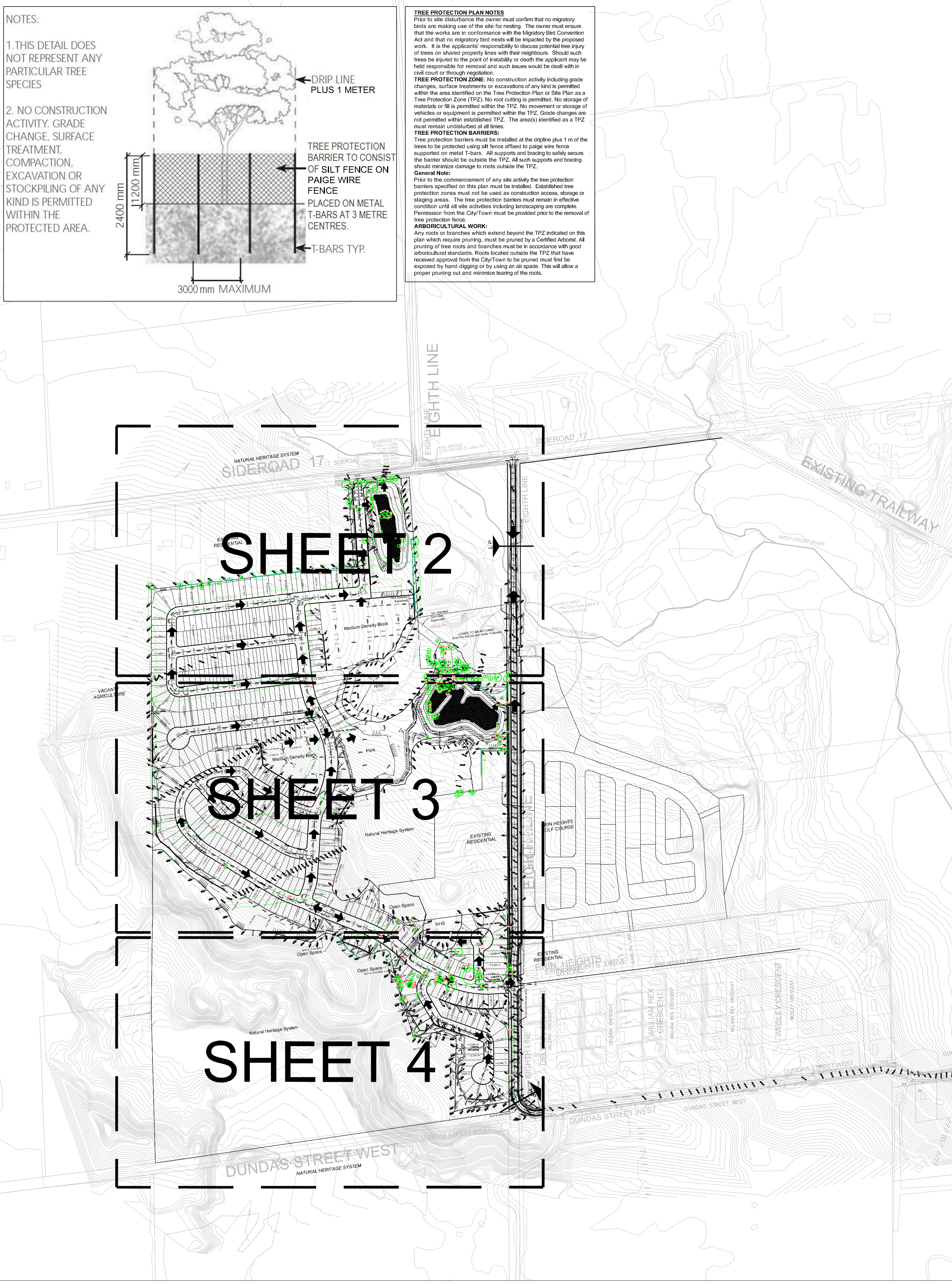
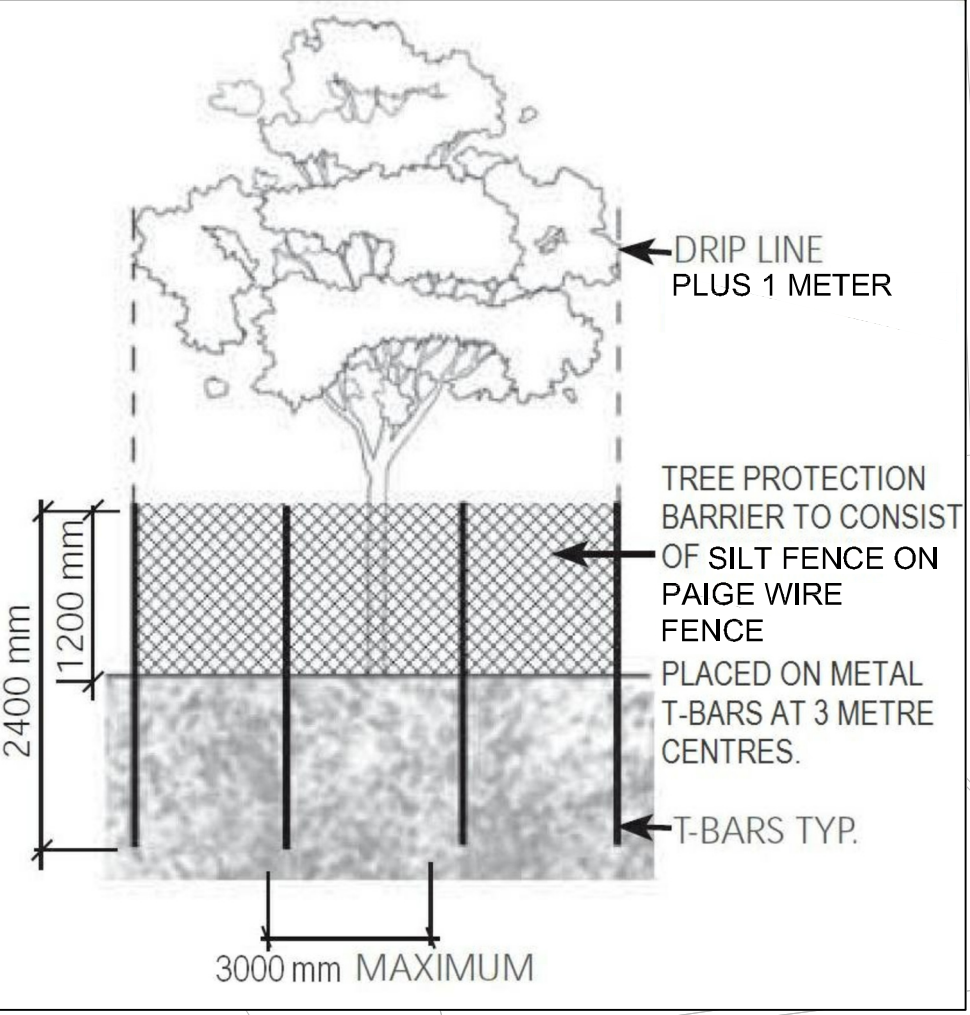


Table 1. Tree Inventory

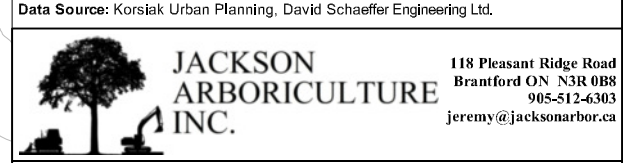
Tree #	Common Name	Scientific Name	DBH	TI	CS	CV	DL	Comments	Recom.
1	Noway Maple	Acer platanoides	23.19	F	G	G	4	Union at 0.4 m w/ih included bark, stem wound	Remove
2	Noway Maple	Acer platanoides	30	FG	G	G	4	Union at 1.6 m	Remove
3	Noway Maple	Acer platanoides	40	FG	G	G	5	Growth deficit	Remove
4	Noway Maple	Acer platanoides	51	F	FG	G	5	Union at 2 m w/ih included bark and seam	Remove
5	Noway Maple	Acer platanoides	38	FG	G	G	5	Union at 2 m	Remove
6	Noway Maple	Acer platanoides	28	FG	G	G	4	Union at 2.5 m	Remove
7	Noway Maple	Acer platanoides	32	P	FF	FF	4	Union at 1.6 m, heavy stem w/und, 20% crown dieback	Remove
8	Noway Maple	Acer platanoides	38	F	G	G	5	Seam	Remove
9	Noway Maple	Acer platanoides	19, 20, 24, 10	FG	G	G	4	Union at ground w/ih included bark	Remove
10	Noway Maple	Acer platanoides	40	F	FG	G	5	Union at 1.8 m, seam w/ih fruiting buds	Remove
11	Apple species	Malus sp	-55	F	F	F	9	Union at 2 m w/ih heart rot, pruning wounds/stem wound	Remove
12	White Spruce	Picea glauca	25	G	G	G	4	Seam	Remove
13	Apple species	Malus sp	-30	G	FG	G	4	Broken branches	Remove
14	Trembling Aspen	Populus tremuloides	20	F	FG	G	4	Stem wound, heavy grapevine competition, bowed	Remove
15	Apple species	Malus sp	-5 to 12	FG	G	G	4	Union at ground, -10 stems	Remove
16	Noway Maple	Acer platanoides	40	FG	G	G	5	Union at 2 m	Remove
17	Green Ash	Fraxinus pennsylvanica	37	P	P	P	3	Epicormic branching, 90% crown dieback, EAB infestation	Remove/Preserve
18	Honey Locust outbar	Gleditsia tricanthos var. 1	34	FG	G	G	5	Union at 2 m	Remove
19	Eastern White Cedar	Thuja occidentalis	10	G	FG	G	2	Union in crown	Remove
20	White Pine	Pinus strobus	21	G	G	G	4	Seam	Remove
21	Balsam Poplar	Populus balsamifera	12	G	G	G	3	Stem wound	Remove
22	White Spruce	Picea glauca	10	G	G	G	3	Stem wound	Remove
23	Scots Pine	Pinus sylvestris	24	FG	G	G	3	Stem wounds	Remove
24	White Spruce	Picea glauca	38	G	G	G	4	Seam	Remove
25	Eastern White Cedar	Thuja occidentalis	14, 10, 17	FG	G	G	1	Union at ground	Remove
26	White Spruce	Picea glauca	-45	G	G	G	5	Seam	Remove
27	Juniper species	Juniperus sp	17, 19	FG	G	G	3	Union at ground	Remove
28	White Pine	Pinus strobus	30, 28	F	FG	G	5	Union at 0.6 m w/ih included bark	Remove
29	Refer to Appendix A								Remove
30	Juniper species	Juniperus sp	-22, 17, 14	FG	G	G	3	Union at ground	Remove
31	White Spruce	Picea glauca	15	G	G	G	3	Seam	Remove
32	Balsam Poplar	Populus balsamifera	16	G	G	G	3	Seam	Remove
33	European Larch	Larix decidua	14	G	G	G	3	Seam	Remove
34	Eastern White Cedar	Thuja occidentalis	-18, 15, 13, 10, 10	FG	G	G	3	Union at ground	Remove
35	White Spruce	Picea glauca	18	G	G	G	2	Seam	Remove
36	Balsam Poplar	Populus balsamifera	10	G	G	G	3	Seam	Remove
37	Balsam Poplar	Populus balsamifera	16	G	G	G	3	Seam	Remove
38	Balsam Poplar	Populus balsamifera	17	G	G	G	3	Seam	Remove
39	Little-leaf Linden	Tilia cordata	45	F	FG	G	4	Stem wounds	Remove
40	Noway Maple	Acer platanoides	34	FG	FG	G	4	Union at 1.6 m stem wound	Remove
41	Noway Maple	Acer platanoides	32	FG	G	G	4	Union at 2 m	Remove
42	Black Cherry	Prunus serotina	-55	G	G	G	7	Seam	Remove
43	Eastern White Cedar	Thuja occidentalis	-20, 40, Avg 30	G	G	G	4	5 metre Eastern White Cedar trees	Preserve
44	Basswood	Tilia americana	-55, 45	F	F	F	5	45 cm stem dead	Preserve
45	Refer to Appendix A								Remove
46	Refer to Appendix A								Remove
47	Refer to Appendix A								Remove
48	Trembling Aspen	Populus tremuloides	16	F	F	F	3	Hypoxylon canker	Remove
49	White Elm	Ulmus alatus	10	G	FG	G	2	Heavy grapevine competition	Remove
50	Green Ash	Fraxinus pennsylvanica	11	FG	FG	G	2	Heavy grapevine competition	Remove
51	Refer to Appendix A								Remove
52	Refer to Appendix A								Remove
53	White Spruce	Picea glauca	-16	G	G	G	3	Union at ground, stem wound	Remove
54	Scots Pine	Pinus sylvestris	-20	G	G	G	3	Union at ground, stem wound	Remove
55	White Pine	Pinus strobus	15	G	G	G	3	Union at ground, stem wound	Remove
56	Refer to Appendix A								Remove
57	White Pine	Pinus strobus	-24	G	G	G	4	Union at ground, stem wound	Remove
58	White Pine	Pinus strobus	17	G	G	G	3	Union at ground, stem wound	Remove
59	White Pine	Pinus strobus	13	G	G	G	3	Union at ground, stem wound	Remove
60	White Pine	Pinus strobus	23	G	G	G	3	Union at ground, stem wound	Remove
61	White Pine	Pinus strobus	12	G	G	G	3	Union at ground, stem wound	Remove
62	White Pine	Pinus strobus	18	FG	G	G	3	Union at 2 m	Remove
63	Willow species	Salix sp	-25	G	G	G	4	Seam	Remove
64	Basswood	Tilia americana	-50, 50, 40	F	FG	G	6	Union at ground	Remove
65	Refer to Appendix A								Remove
66	Refer to Appendix A								Remove
67	Refer to Appendix A								Remove
68	Refer to Appendix A								Remove
69	Refer to Appendix A								Remove
70	Refer to Appendix A								Remove
71	Refer to Appendix A								Remove
72	Refer to Appendix A								Remove
73	Refer to Appendix A								Remove
74	Refer to Appendix A								Remove
75	Refer to Appendix A								Remove
76	Refer to Appendix A								Remove
77	Mantoba Maple	Acer negundo	-15	G	G	G	3	Grapevine competition	Remove
78	Mantoba Maple	Acer negundo	-15, 8	F	F	F	3	Union at ground, stem wound, rubbing on fence, heavy sap	Remove
79	Mantoba Maple	Acer negundo	41, 41	F	F	F	5	Union at 0.5 m w/ih included bark, broken branches, epicormic	Remove
80	Mantoba Maple	Acer negundo	17	F	F	F	4	Seep, bowed - understory	Remove
81	Noway Spruce	Picea abies	85	G	G	G	5	Seam	Remove
82	Green Ash	Fraxinus pennsylvanica	11	FG	FG	G	3	Understorey, crooked	Remove
83	Noway Spruce	Picea abies	57	G	G	G	5	Understorey, crooked	Remove
84	Noway Spruce	Picea abies	50	G	G	G	5	Understorey, crooked	Remove
85	Noway Spruce	Picea abies	41	F	FG	G	4	Heavy broken branches	Remove
86	White Spruce	Picea glauca	50	FG	FG	G	4	Union at 1.6 m	Remove
87	Noway Spruce	Picea abies	53	G	G	G	5	Union at 1.6 m	Remove
88	Noway Spruce	Picea abies	55	G	G	G	5	Union at 1.6 m	Remove
89	Black Cherry	Prunus serotina	51	FG	FG	G	5	Union at 2.5 m	Remove
90	Noway Spruce	Picea abies	58	G	G	G	5	Union at 2.5 m	Remove
91	Noway Spruce	Picea abies	46	G	G	G	4	Union at 2.5 m	Remove
92	Noway Spruce	Picea abies	-58	P	P	P	5	Stem wounds in crown, 70% crown dieback	Remove
93	Mantoba Maple	Acer negundo	-60	P	P	P	5	Heavy stem wound/peeling bark, epicormic branching, brok	Remove
94	Noway Spruce	Picea abies	53	FG	G	G	5	Lean, stem wound	Remove
95	Noway Spruce	Picea abies	58	G	G	G	5	Lean, stem wound	Remove
96	White Pine	Pinus strobus	-38	G	G	G	6	Lean, stem wound	Remove
97	Mantoba Maple	Acer negundo	-14, 20	F	FG	G	6	Union at 0.4 m, heavy pruning w/und, understorey	Remove
98	Eastern White Cedar	Thuja occidentalis	-11	-G	FG	G	2	Understorey	Remove
99	Mantoba Maple	Acer negundo	-40, 18	F	FG	G	4	Union at ground, coppice growth	Remove
100	White Pine	Pinus strobus	15	FG	P	P	3	Top cut	Remove
101	Mantoba Maple	Acer negundo	59	P	FF	FF	6	Heavy broken branches, cavity at flare w/ih heart rot, spf	Remove
102	Mantoba Maple	Acer negundo	38, 33	FG	G	G	4	Union at 0.5 m	Remove
103	Mantoba Maple	Acer negundo	22, 14, 20	F	FG	G	4	Union at ground, lean	Remove
104	Mantoba Maple	Acer negundo	21	F	FG	G	5	Lean	Remove
105	Mantoba Maple	Acer negundo	37	FG	G	G	5	Lean, stem wound, coppice branches	Remove
106	Apple species	Malus sp	36	F	F	F	5	Crook, 20% crown dieback	Remove
107	Mantoba Maple	Acer negundo	23, 26	F	F	F	3	Union at ground, 1 stem failed	Remove
108	Mantoba Maple	Acer negundo	20, 18	FG	FG	G	5	Union at ground, lean, epicormic branching	Remove
109	Apple species	Malus sp	36	FF	F	F	4	Union at 1.8 m w/ih cavities and heart rot, 20% crown die	Remove
110	Mantoba Maple	Acer negundo	13	FG	F	F	3	Bowed, 20% crown dieback	Remove
111	Mantoba Maple	Acer negundo	22	FG	FG	G	4	Bow in crown - rubbing on trailer and fence	Remove
112	Mantoba Maple	Acer negundo	12	F	FG	G	3	Bowed	Remove
113	Mantoba Maple	Acer negundo	11	F	FG	G	4	Bowed, stem wound, understorey	Remove
114	Apple species	Malus sp	43	FG	F	F	4	Seam, 20% crown dieback	Remove
115	Mantoba Maple	Acer negundo	47	F	G	FG	4	Heavy stem wound from failed stem, epicormic branching	Remove
116	Mantoba Maple	Acer negundo	11, 11	F	G	G	3	Union at 0.4 m w/ih included bark	Remove
117	Scots Pine	Pinus sylvestris	50	G	G	G	4	Seam	Remove
118	White Spruce	Picea glauca	38	G	G	G	4	Seam	Remove
119	White Spruce	Picea glauca	38	G	G	G	4	Seam	Remove
120	Mantoba Maple	Acer negundo	16, 12, 20	FG	G	G	4	Union at ground	Remove
121	Mantoba Maple	Acer negundo	20	FG	G	G	4	Light sw eep	Remove
122	Mantoba Maple	Acer negundo	18	F	FG	G	4	Sw eep	Remove
123	White Spruce	Picea glauca	18, 13	FG	G	G	4	Union at ground	Remove
124	Eastern White Cedar	Thuja occidentalis	19, 18	F	FG	G	3	Union at 0.8 m	Remove
125	Eastern White Cedar	Thuja occidentalis	16, 6	FG	G	G	3	Union at ground	Remove
126	Mantoba Maple	Acer negundo	-30	F	F	F	4	Stem wound/peeling bark at union, pruning wounds	Remove
127	Mantoba Maple	Acer negundo	21	FG	FG	G	4	Light lean	Remove
128	Mantoba Maple	Acer negundo	34	F	FG	G	5	Union at 1.9 m lean	Remove
129	White Spruce	Picea glauca	36	G	G	G	4	Grapevine competition	Remove
130	Mantoba Maple	Acer negundo	16, 9, 10, 8, 9	F	FG	G	4	Union at ground	Remove
131	Mantoba Maple	Acer negundo	12	FG	FG	G	4	Union at ground	Remove
132	Mantoba Maple	Acer negundo	-14, 8, 11,						



LEGEND

- GPS Tree Location
- 13 Tree Number Identified for Preservation (GREEN)
- 32 Tree Polygon Number Identified for Removal (RED)
- TPZ Tree Preservation Zone Symbol
- Tree Protection Boundary
- Tree Protection Fence Location
- Property Boundary
- Dripline (individual tree)

No.	Date	By	Description
1	20 May 2022	JL	Report Submission
2	4 July 2023	JL	Report Revisions
3	16 Oct 2023	JL	Report Revisions

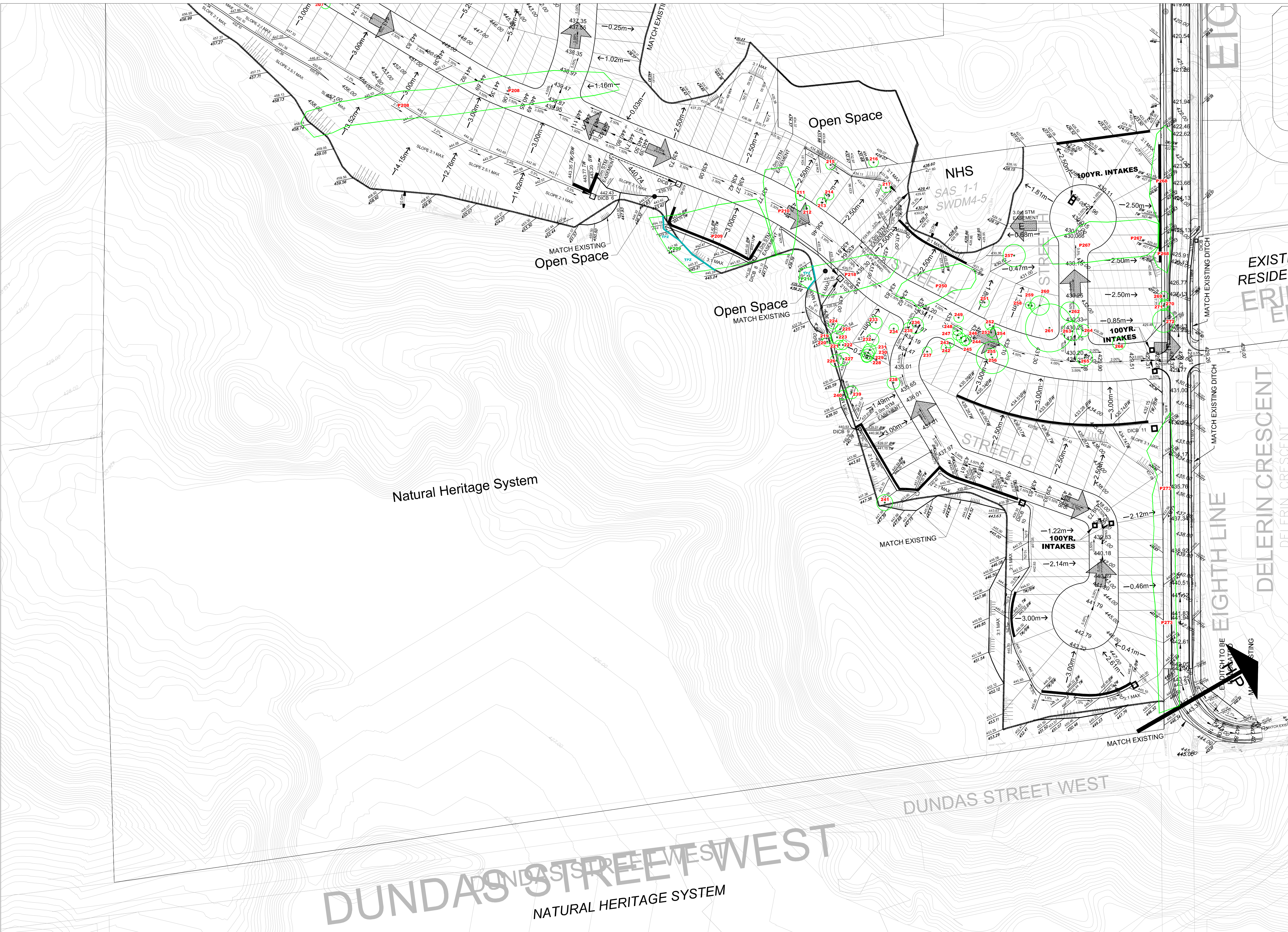


5520 & 5552 Eighth Line
Erin, ON

Mattamy (Erin) Developments Inc.
&
2779181 Ontario Inc.

Tree Preservation Plan

Project #	P244	Sheet #	2
Date	26 May 2022	Revised	16 October 2023
Scale	1:1,000		



LEGEND

- GPS Tree Location
- 13 Tree Number Identified for Preservation (GREEN)
- 32 Tree Polygon Number Identified for Removal (RED)
- TPZ Tree Preservation Zone Symbol
- Tree Polygon Boundary
- Tree Protection Fence Location
- Property Boundary
- Dripline (individual tree)

No.	Date	By	Description
1	20 May 2022	JJ	Report Submission
2	4 July 2023	JJ	Report Revisions
3	16 Oct. 2023	JJ	Report Revisions

Data Source: Korsch Urban Planning, David Schaefer Engineering Ltd.

JACKSON ARBORICULTURE INC.
 110 Pleasant Ridge Road
 Bradford, ON N3R 1R8
 905.421.4400
 jcorrey@jacksonarb.com

**5520 & 5552 Eighth Line
Erin, ON**

**Mattamy (Erin) Developments Inc.
&
2779181 Ontario Inc.**

Tree Preservation Plan

Project #	P244	Sheet #	4
Date	26 May 2022 Revised 16 October 2023		
Scale	1:1,000		