

Town of Erin

Erin Wastewater System

Construction Liaison Committee Meeting

April 4, 2023

Nick Colucci, P.Eng.
Director of Infrastructure and
Engineering Services



www.erin.ca



AGENDA

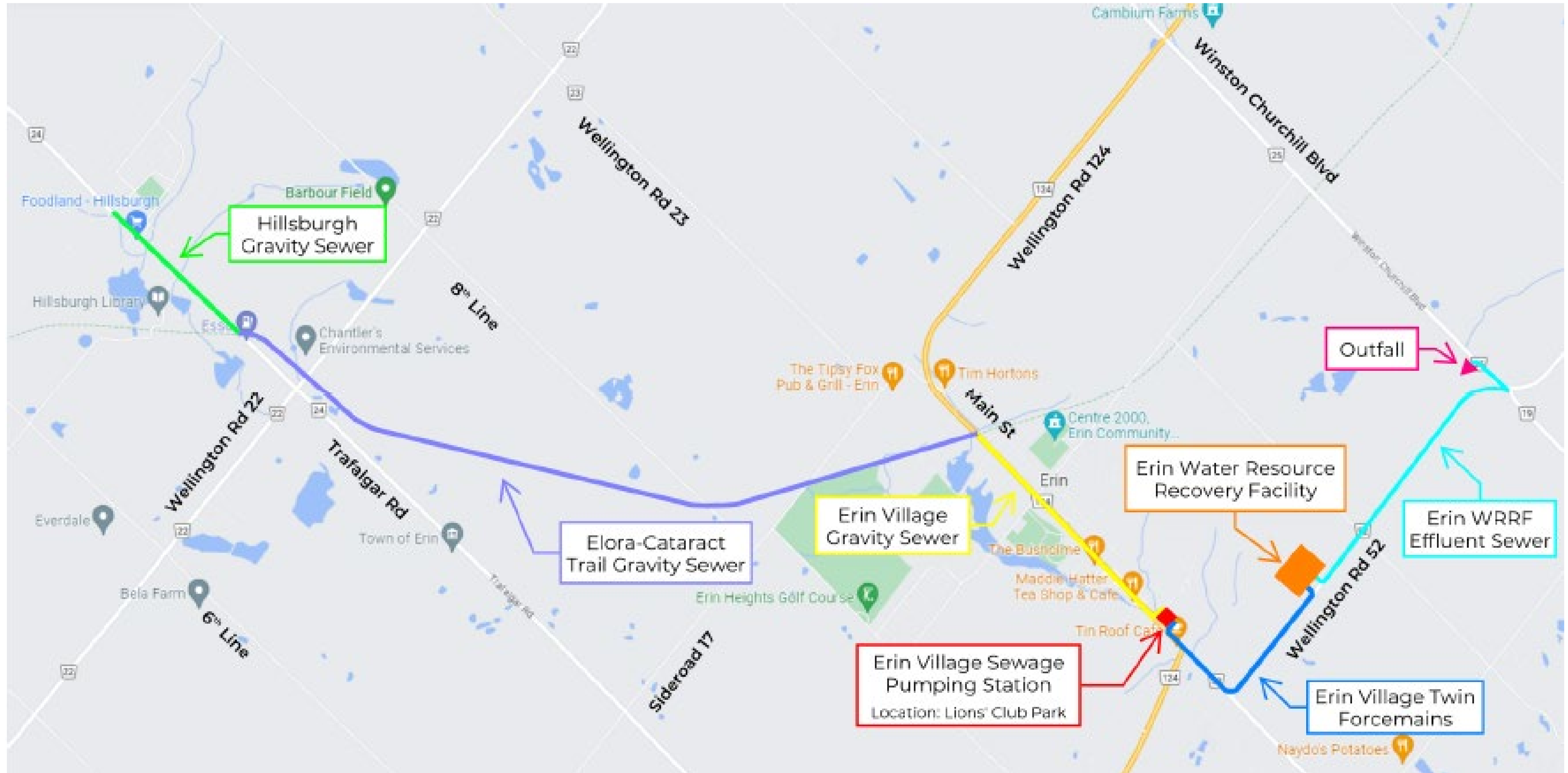
- Project Overview
- WRRF
- CR 52 Influent/Effluent
Force Main Construction
- Main Street Micro-Tunneling
- Trafalgar Road Construction
- Elora-Cataract Trail
- Sewage Pumping Station
- Questions



PROJECT OVERVIEW



PROJECT OVERVIEW



www.erin.ca



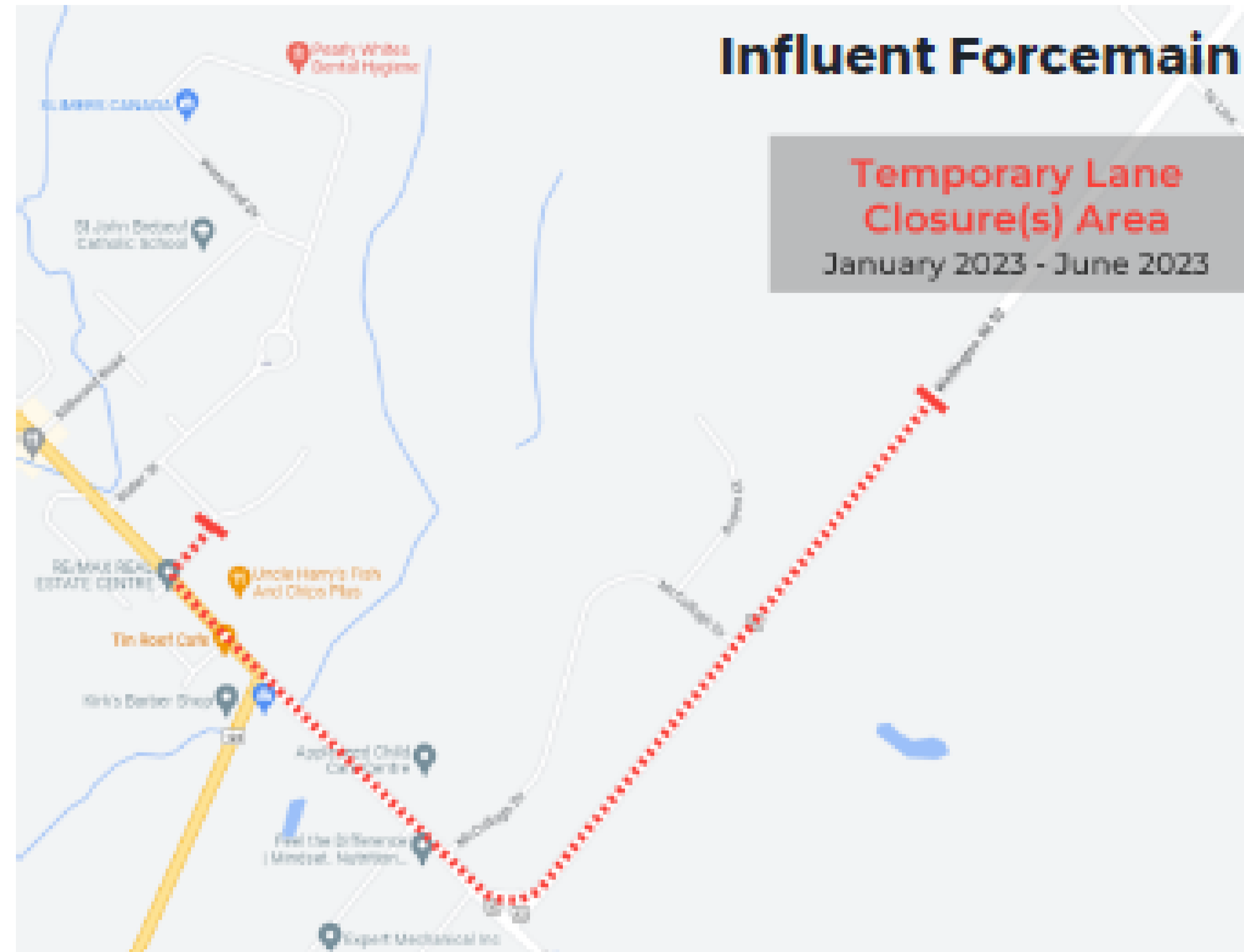
W R R F



www.erin.ca



FORCE MAIN CONSTRUCTION

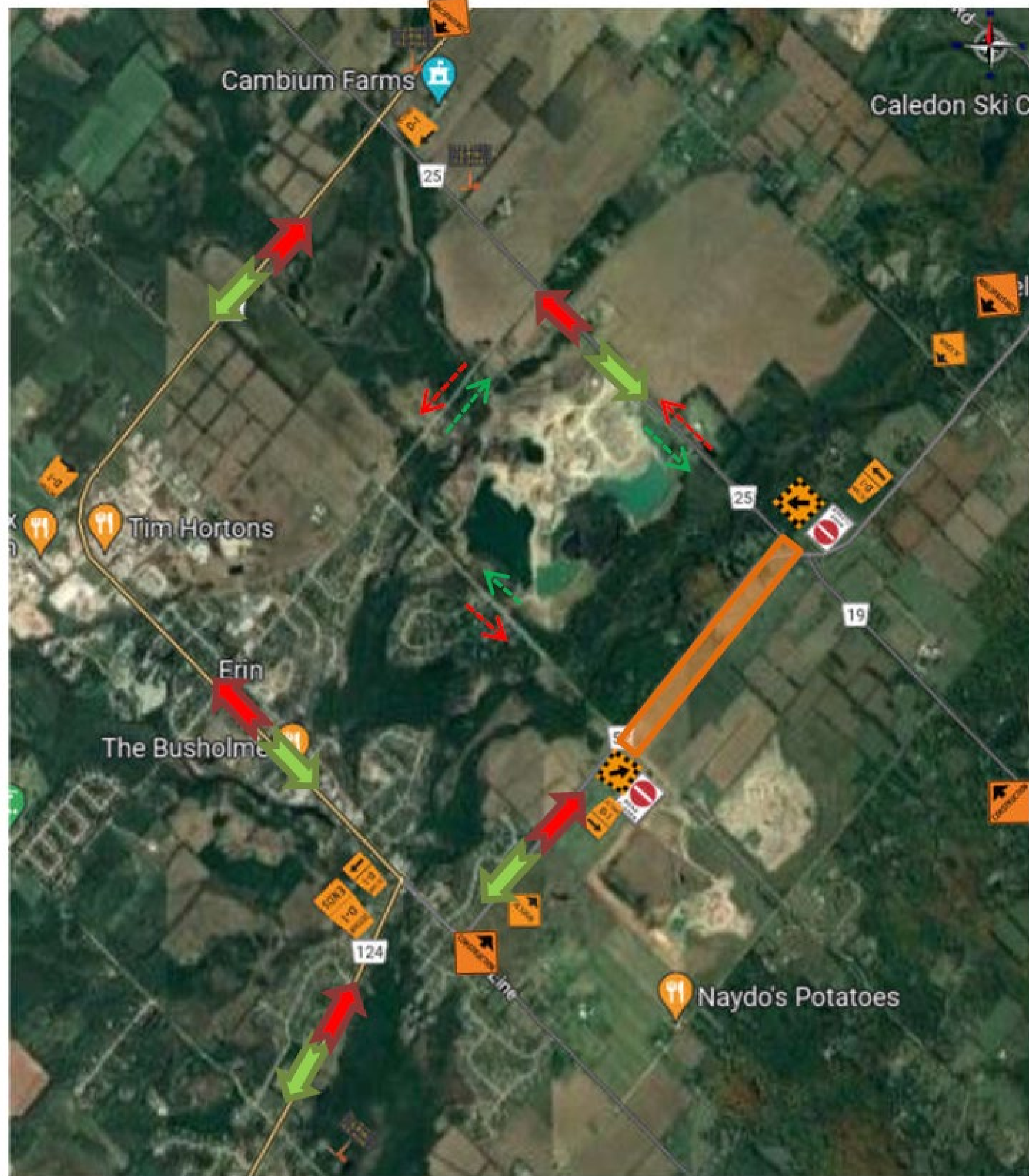


- Work is anticipated to start the week of **April 03rd**
- Temporary lane closure will be required along the course of construction
- Road signage warning of delays are in place along approach roads
- A construction notice was issued to properties adjacent to the closed section of the road on **December 21st, 2022**.



- Work is anticipated to start the week of **April 10th**
- Temporary lane closure will be required along the course of construction
- Short term temporary road closures will be required for installation of some infrastructure
- Road signage warning of delays are in place along approach roads
- A construction notice was distributed to adjacent properties on **March 30, 2023**

FORCE MAIN DETOUR ROUTES



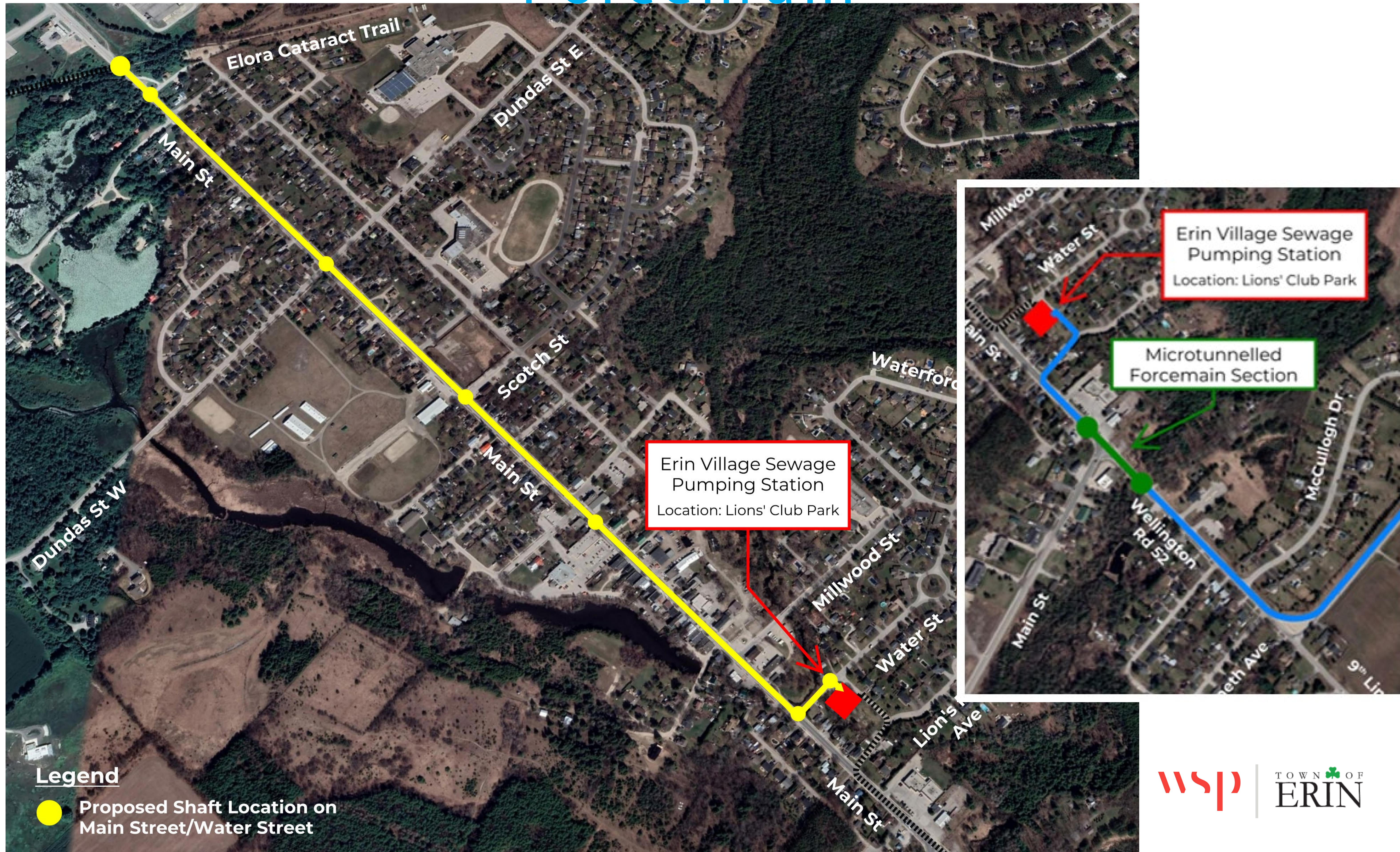
Temporary Road Closure & Detour Traffic Plan During the Installation of Chambers for Stages 3 & 4



Stage 5 Detour Route

- o Roads will be closed to work on Winston Churchill Blvd. From 11+680 till Sta 12+055 approx. 375m
- o Estimated duration of three weeks.

Erin Village Gravity Sewer / Twin Forcemain



MAIN STREET TRUNK SEWER MICRO-TUNNELING

- Anticipated earliest start date is May 2023
- Work to start following completion of utility relocations
 - Hydro / Bell / Rogers
 - Two-way traffic flow will be maintained
 - Jogs may be required around microtunneling shaft locations
 - Lane restrictions may be required at creek crossing south of Wellington Road 124 intersection
 - Traffic signage warning of potential delays will be in place along approach roads
 - Truck detour signage will be in place before work starts



www.erin.ca



MAIN STREET TRUNK SEWER SHAFT LOCATIONS

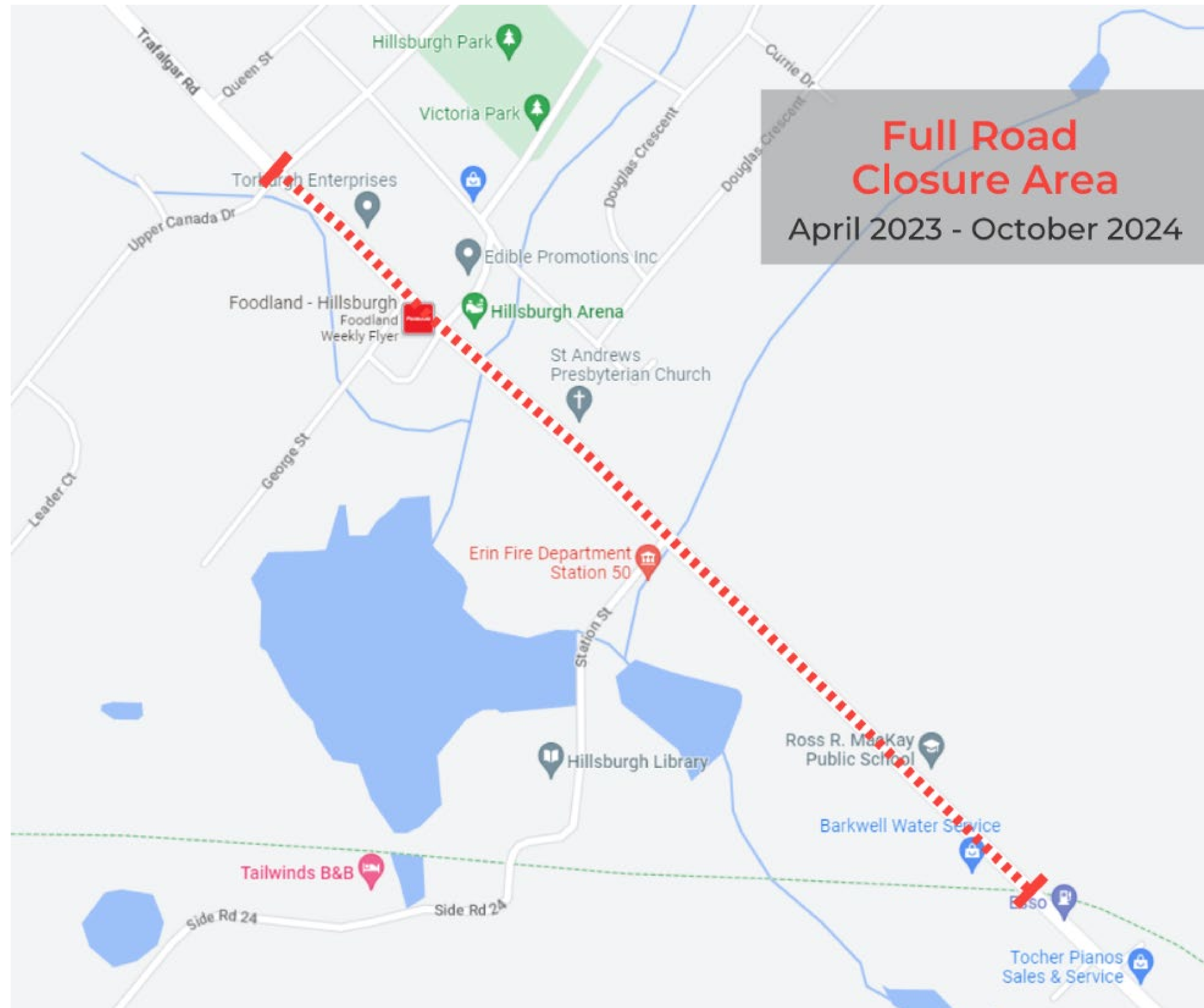


www.erin.ca



TRAFALGAR ROAD TRUNK SEWER

- Work is anticipated to start the week of April 17th
- Full road closure will be required along Trafalgar Road from Upper Canada Drive to the Elora-Cataract Trail
- Advanced signage informing the public of the upcoming road closure will be in place by April 6th
- Detour signage will be in place by April 14th, prior to road closure
- Construction notices were distributed to properties adjacent to the closed section of road on March 13, 2023

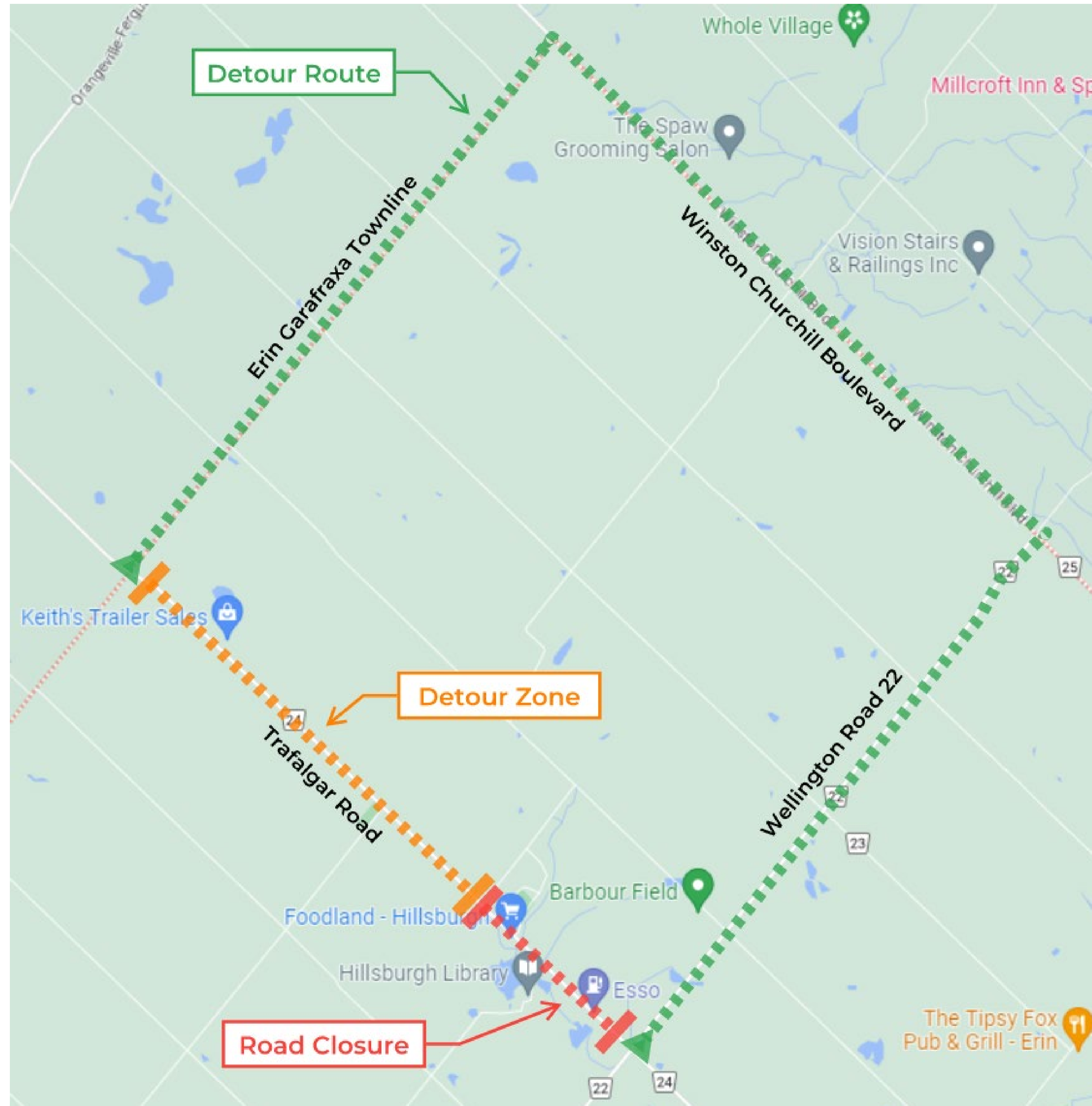


www.erin.ca

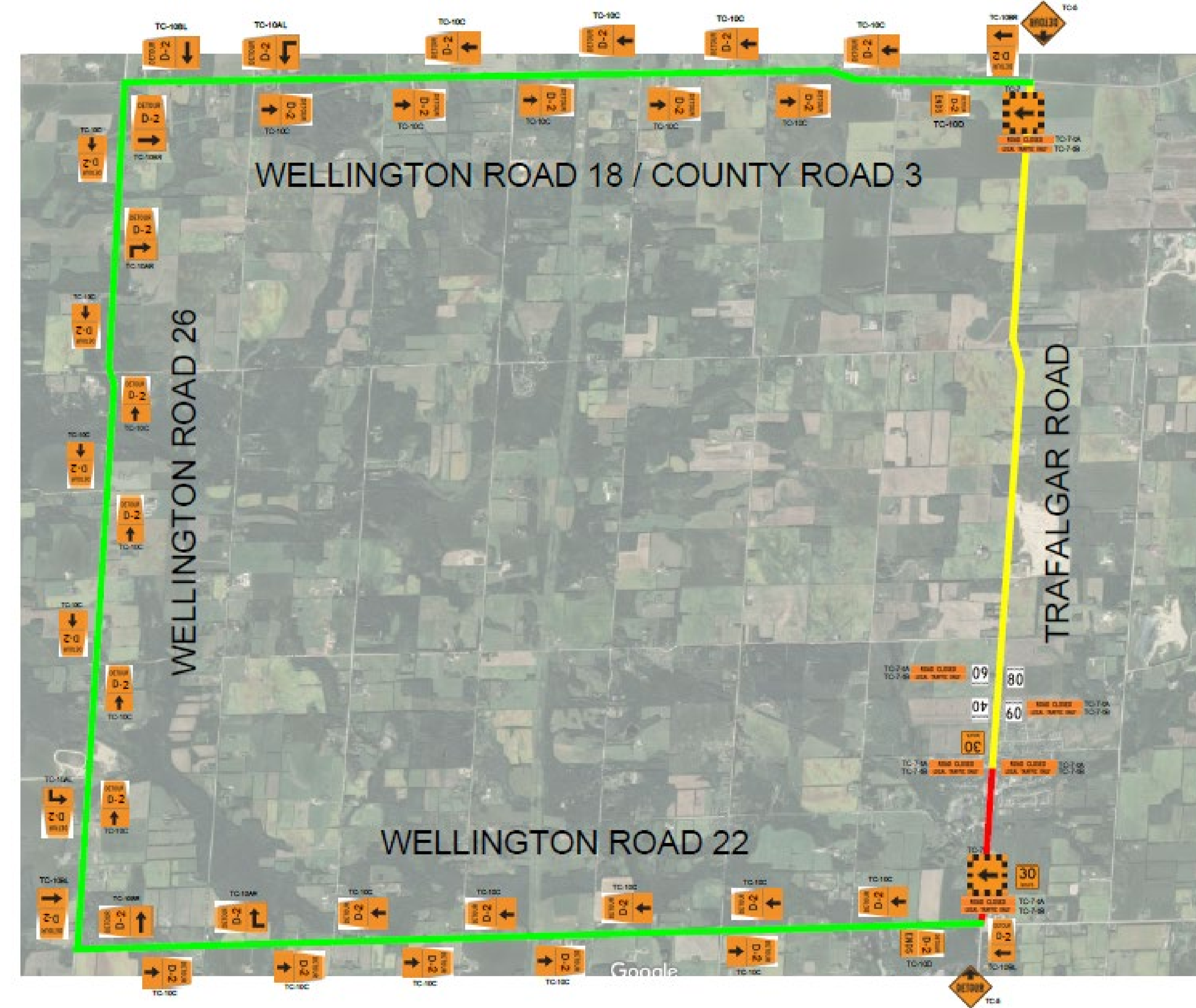


TRAFALGAR ROAD TRUNK DETOUR ROUTES

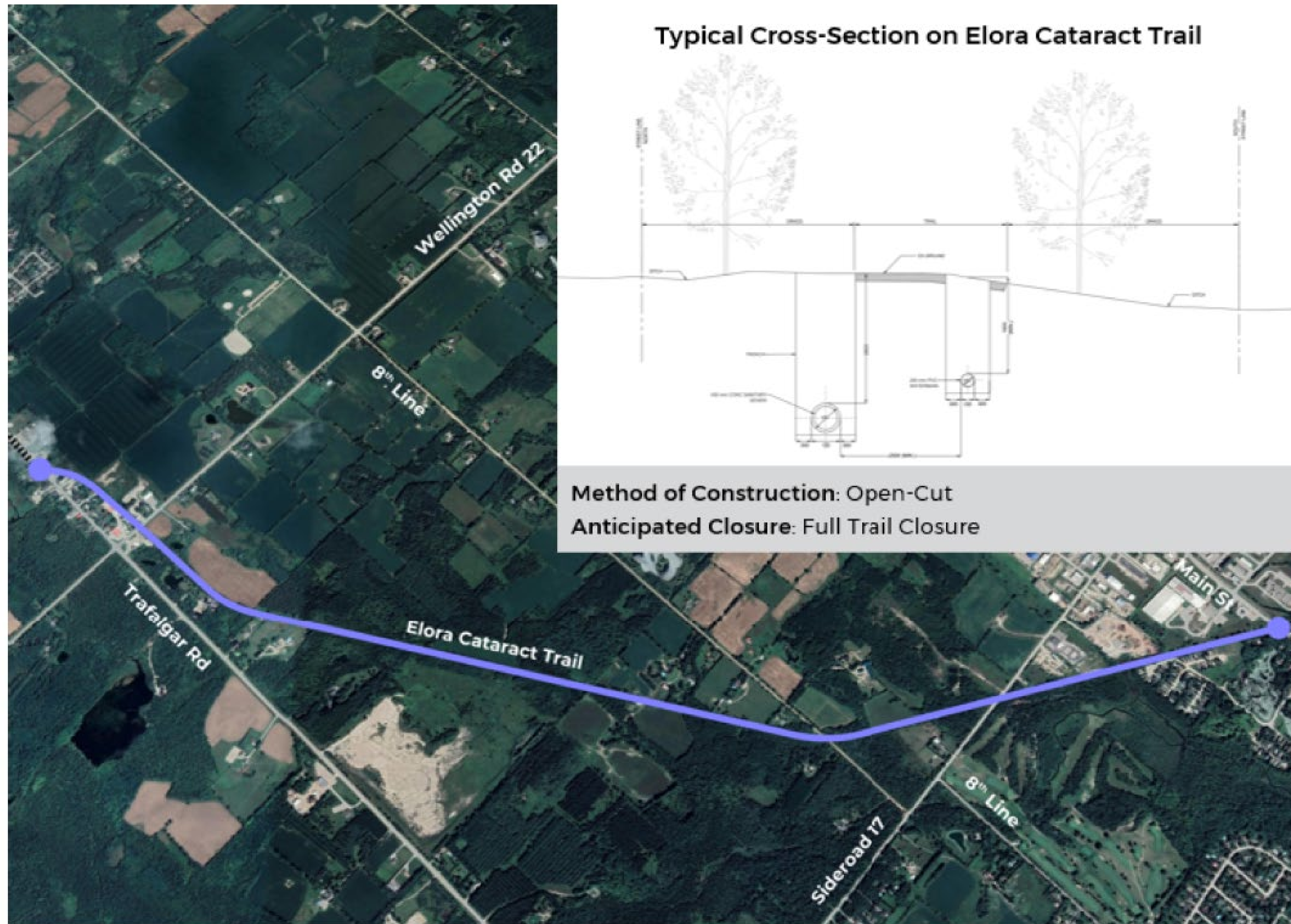
SMALL VEHICLE DETOUR ROUTES



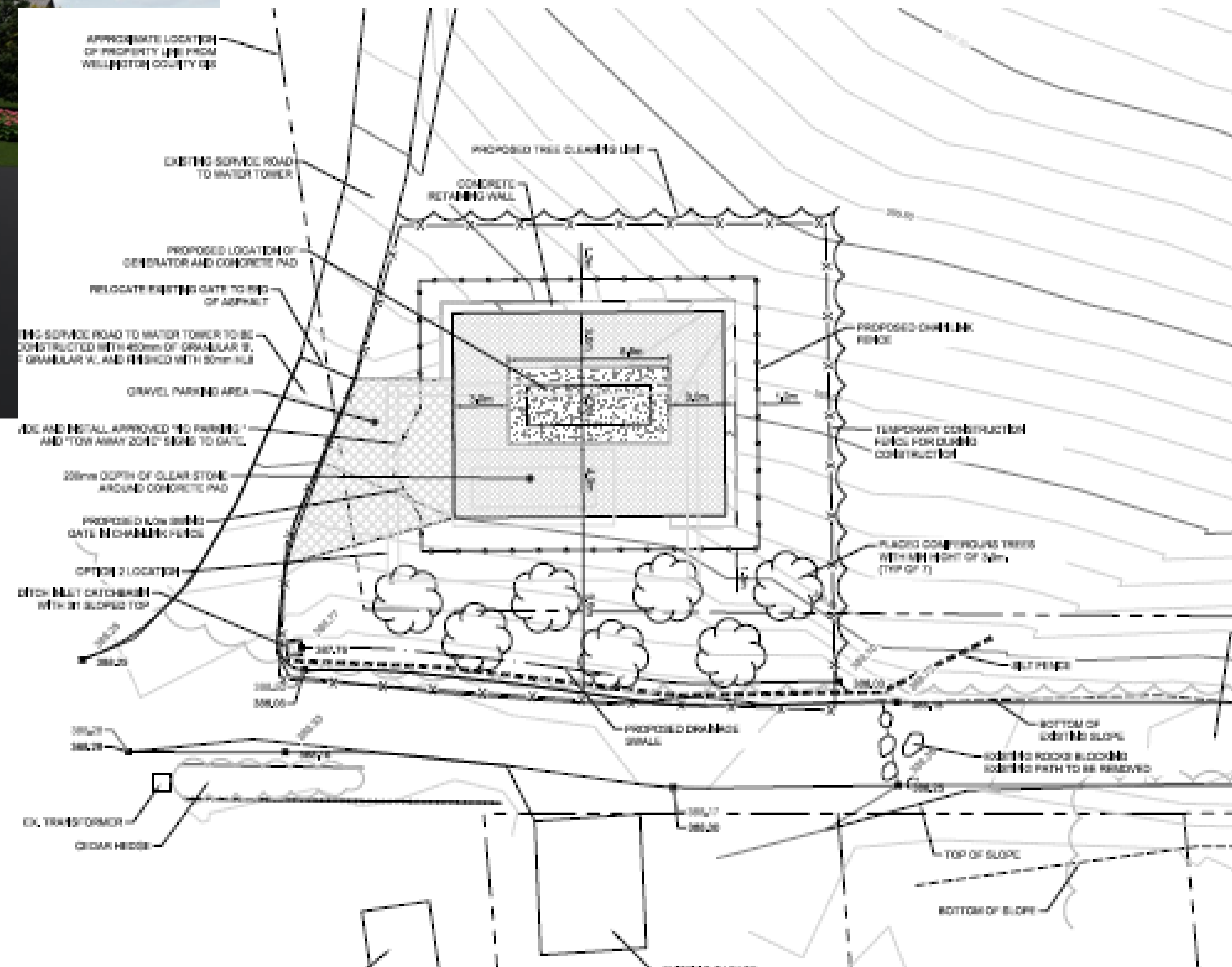
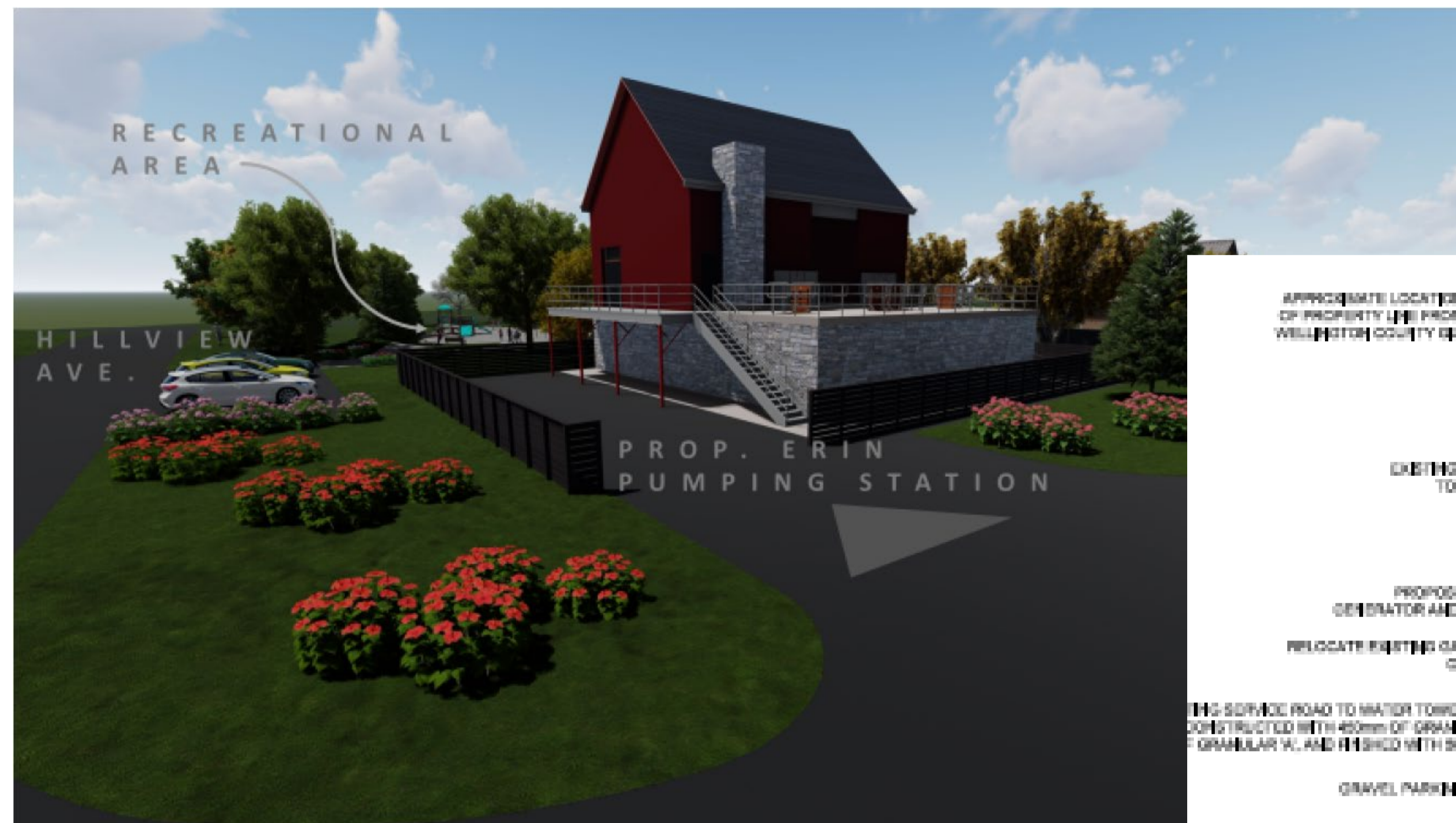
TRUCK DETOUR ROUTES



ELORA-CATARACT TRAIL GRAVITY SEWER



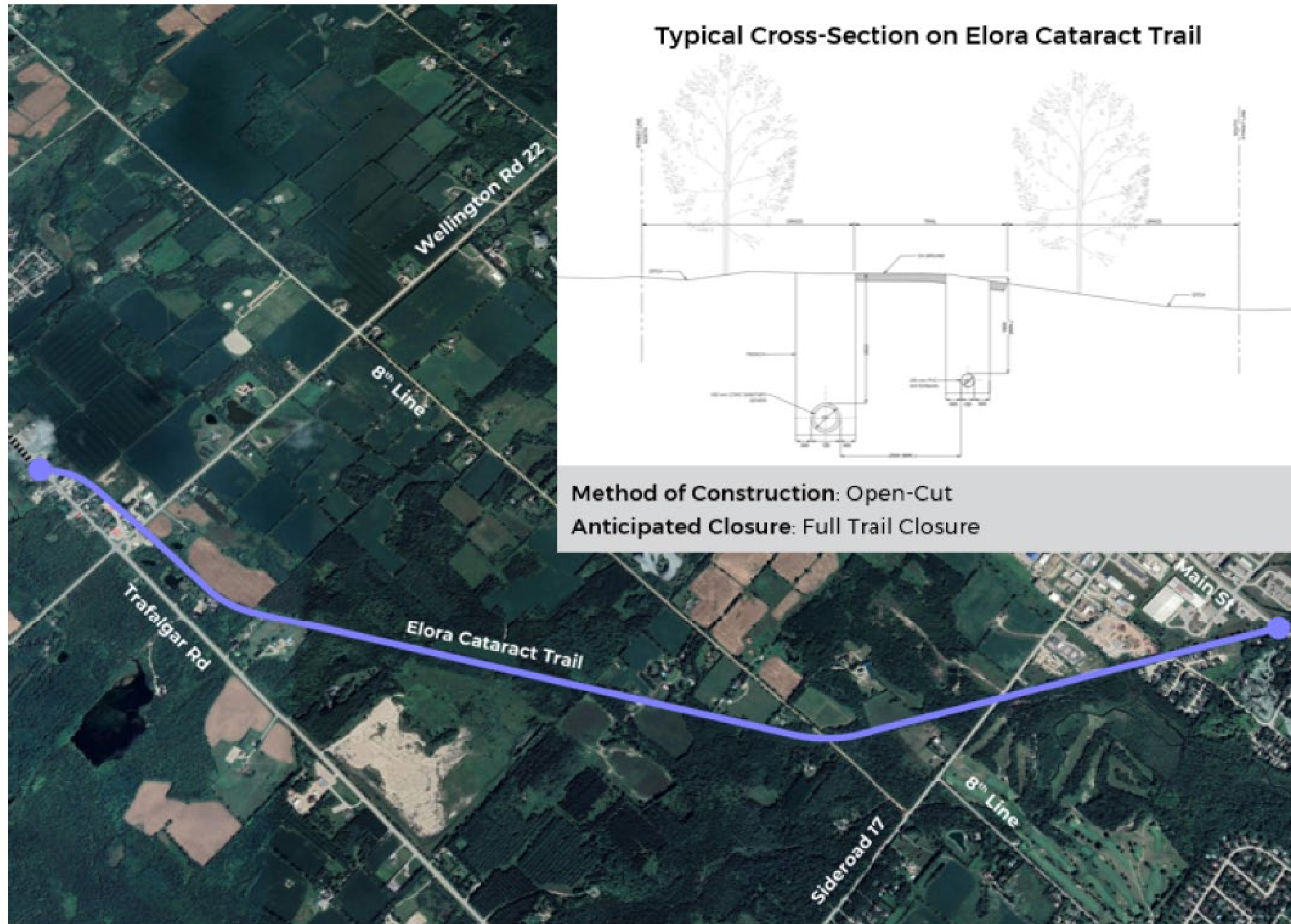
SEWAGE PUMPING STATION



www.erin.ca



ELORA-CATARACT TRAIL GRAVITY SEWER



Thank you!

Questions?

www.erin.ca

