

Town of Erin

Erin Wastewater System

Erin Main St. Traffic  
Management Plan

Chamber of Commerce

Nick Colucci, P.Eng.  
Director of Infrastructure and  
Engineering Services



[www.erin.ca](http://www.erin.ca)



# AGENDA

- The Work
- The Objectives
- The Proposal
- The Proposal – Reasons
- The Proposal – Advantages
- Questions

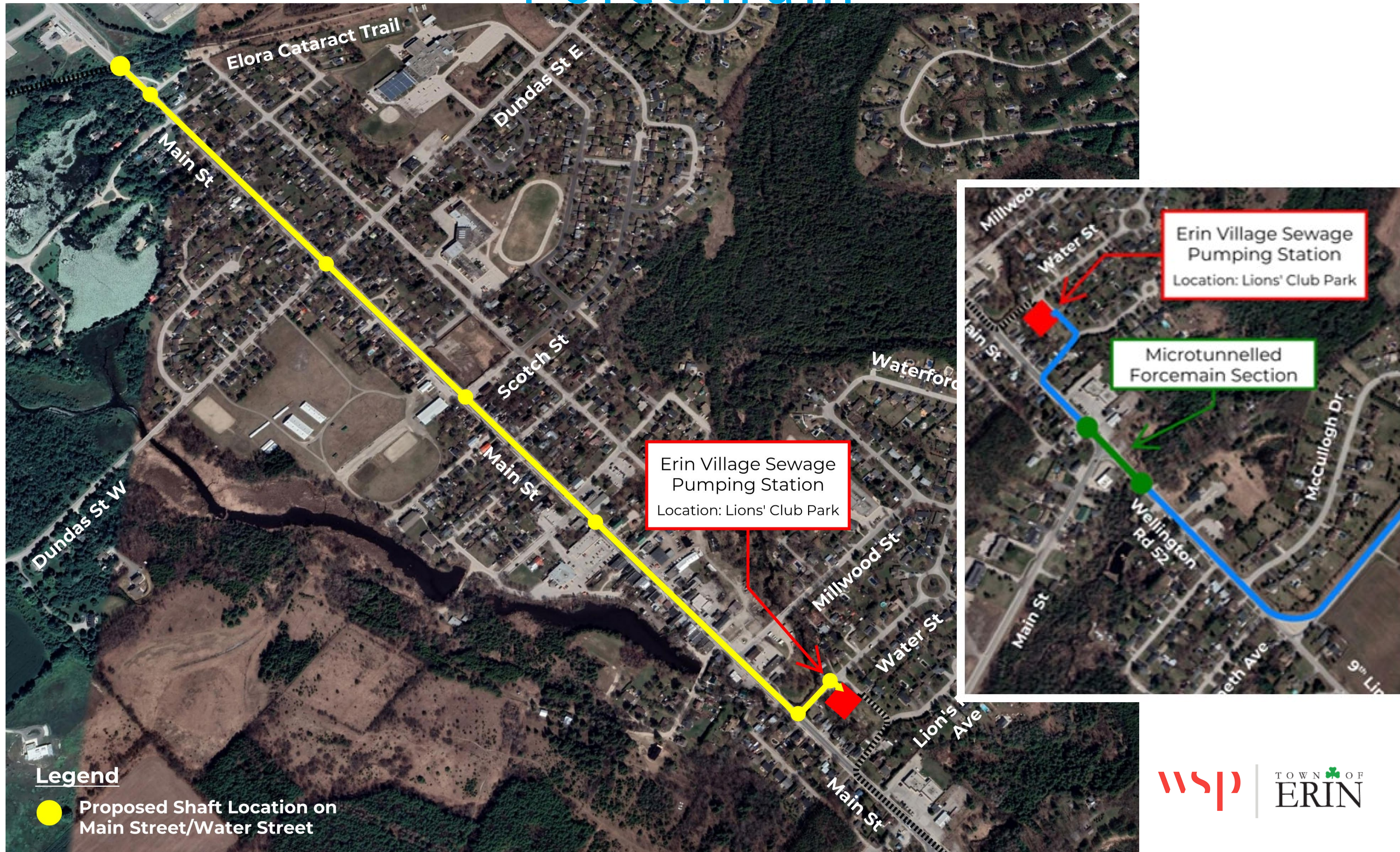


# Erin Main St. Traffic Management Plan

## The Work - Erin Wastewater System Overview



# Erin Village Gravity Sewer / Twin Forcemain



# Trenchless Pipe Installation

## Micro -tunneling Method

- Micro-tunneling is a trenchless tunnel construction method that is widely used for the installation of sewer, water and gas pipelines, and telecommunications cables.
- Micro-tunnel boring machines use laser-guided remote control and therefore best suited for pipelines that require precise grades, such as gravity sewers.
- Micro-tunneling involves constructing shafts and tunneling from shaft to shaft. The shafts are constructed without open excavation.
- In comparison to the traditional open-cut pipe installation method, micro-tunneling is less disruptive in nature and has a lower carbon footprint.



## The Objectives

- SAFETY
  - for the pedestrians, drivers and the contractors
- ACCESS
  - to all residences, businesses and streets..at all times
- Minimize disruptions and delays
  - eliminating driver confusion and frustration will make the experience better for all parties

# Erin Main St. Traffic Management Plan

## The Proposal

- One-way traffic north-bound along Main St. for duration of construction (12-16 months)
  - From County Rd 52/9<sup>th</sup> Line intersection to Erinville Dr. (Ultamar Gas Station)
- South-bound traffic detoured along adjacent County roads
- Concrete jersey barriers directing traffic in the proper direction



# Erin Main St. Traffic Management Plan

## The Proposal (cont'd)

- One-way traffic along Main St. with detour routes for traffic coming from the east





# Erin Main St. Traffic Management Plan

## The Proposal (cont'd)

- One-way traffic along Main St. with detour routes for traffic coming from the west



## The Proposal - Reasons

- There are eight (8) micro-tunneling shaft compound locations along Main St. (see Erin Gravity Sewer slide)
  - each compound will take up a lane
- Having temporary traffic lights at each compound location (24/7) will create significant delays and confuse and frustrate drivers
- Lessons learned from the Enbridge work along Main St. last year clearly showed that these delays were very frustrating to drivers

## The Proposal - Advantages

- NO TRAFFIC DELAYS
  - One-way traffic will flow through Main St. better than it does currently as there is no need to wait for oncoming traffic to make left hand turns
- Reduction in transport truck traffic through Erin Village
- The existing traffic signals will remain and will not need to be adjusted
  - No need for temporary traffic signals or flagpersons

# Thank you!

# Questions?

[www.erin.ca](http://www.erin.ca)

