



Message from Wellington County Warden - Kelly Linton

The County of Wellington's Strategic Action Plan states

“People are our Priority.”

Therefore, we are committed to the safety and well-being of our residents across all seven municipalities. Over the last few months, we have worked together to take positive action in response to the COVID-19 pandemic. We are now well-positioned to implement the Wellington County Community Safety and Well-Being Plan.

Building safe and healthy communities is a shared responsibility. The Community Safety and Well-Being Plan demonstrates the County's commitment to partner with Safe Communities Wellington County. Together, we can identify and prioritize the issues facing our residents. This plan will identify the areas that can make a significant impact by harnessing the power of prevention and our social development instead of heavily taxing our incident response.

On behalf of Wellington County Council, I would like to thank the County, Wellington County OPP and Safe Communities Wellington County for implementing the Community Safety and Well-Being Plan. We are working together to ensure the County continues to be one of the safest places to live, work and play in Canada.



Message from Wellington County Police Service Board (WCPSB) Chair - Joanne Ross-Zuj

The Wellington County Police Services Board believes the Community Safety and Well-Being Plan will connect first responders and community services throughout the County. Partnerships allow the special abilities of individual groups to maximize impact. Collaboration is crucial to community safety and well-being.

The key policing initiative for Wellington County OPP will always be the urgent needs of our residents. The Community Safety and Well-Being Plan will provide the Wellington County OPP with additional tools and resources to respond to emerging issues and determine the best course of action.

The Wellington County Police Services Board would like to thank Safe Communities Wellington County for bringing all key stakeholders together and providing the foundation for the Community Safety and Well-Being Plan. We share one common goal of keeping the residents of Wellington County safe.



Message from Wellington County Ontario Provincial Police Inspector Detachment Commander - Paul Richardson

Wellington County is pleased to partner with the Safe Communities Committee and the County of Wellington to develop the Community Safety and Well-Being Plan. The Wellington County OPP has a partnership with the Canadian Mental Health Association of Waterloo-Wellington (CMHAWW) to provide effective and informed responses to residents who face mental health challenges or have been impacted by suicide. To help improve road safety, Wellington County OPP is developing a plan to address aggressive driving to reduce motor vehicle collisions. In collaboration with community stakeholders, Wellington County OPP will continue to evaluate and modify our services to address the needs of our community and bring us closer to our vision: "Safe Communities ...A Secure Ontario."



Message from SCWC Programme Coordinator - Christine Veit

Every day, I have the opportunity to keep my family and the residents of Wellington County safe. I am able to work alongside people whose jobs are to care for the safety and well-being of everyone in our wonderful County.

The organizations of Wellington-Dufferin-Guelph Public Health (WDGPH), Wellington County OPP, Upper Grand District School Board (UGDSB), Wellington Catholic District School Board (WCDSB), Guelph-Wellington Drug Strategy, CMHAWW, and County of Wellington Social Services make a large impact on our community. By working together, we can improve the safety and wellness of the people who live in Wellington County. It's truly inspirational. Every day, I am grateful and proud to work with these organizations.



Table of Contents

Acknowledgements	4
Introduction	4
Community Safety and Well-Being Planning in Ontario - An Emerging Approach	5
Towards Collaboration and Action to Enhance Community Safety and Well-Being in Wellington County	8
Wellington County's Model for Collaboration, Planning and Action	12
Preliminary Issues for Attention	18
Moving Forward	21
Endnotes	27



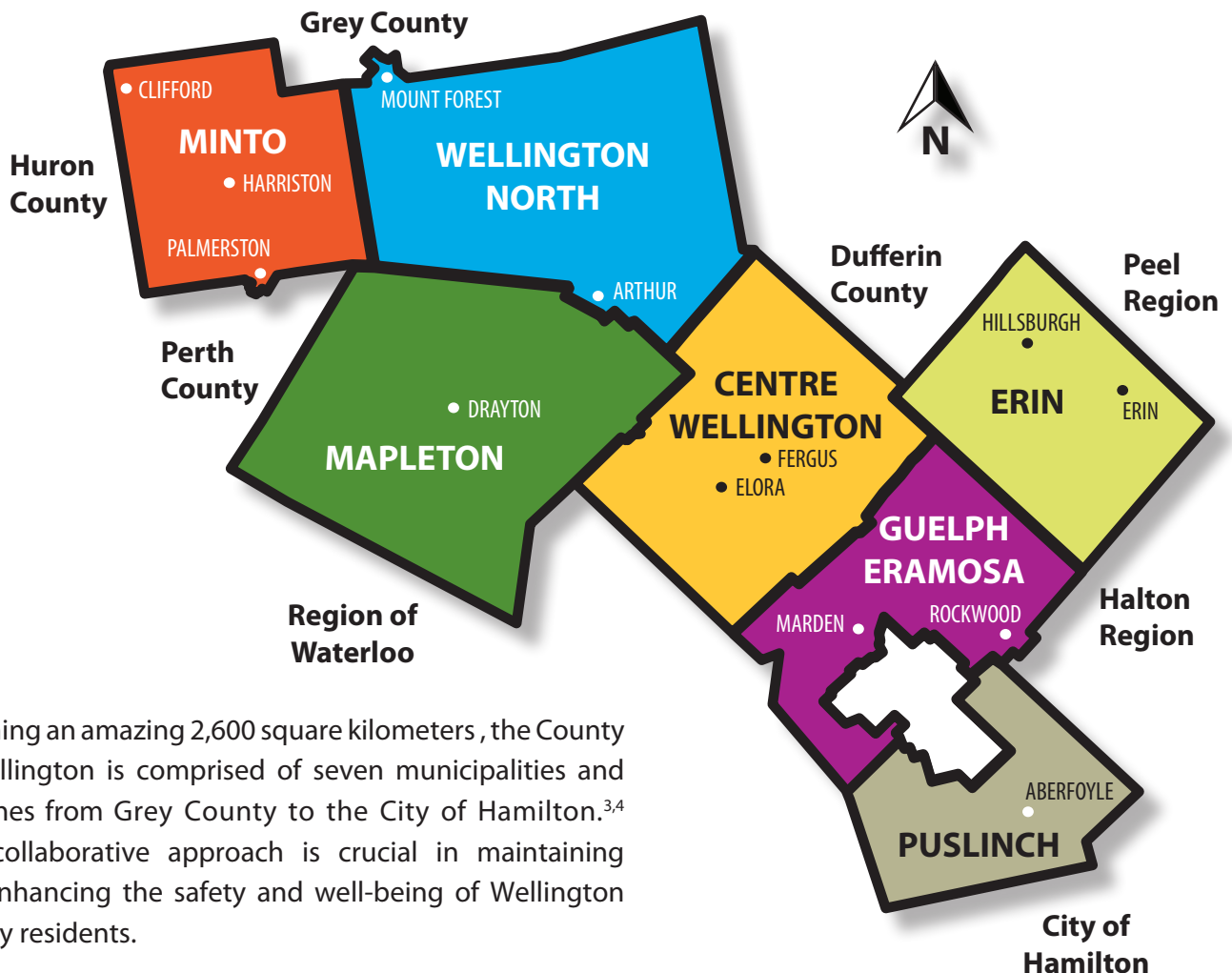
Acknowledgements

Implementing the Community Safety and Well-Being Plan is a collaborative effort. The plan was developed through the Safe Communities Wellington County Leadership Table in partnership with Wellington County OPP and the County of Wellington. We would like to thank members and organizations throughout the community who participated in the community survey, priority setting exercise, and environmental scan. These activities provided the foundation for the plan.

Introduction

The County of Wellington is a dynamic, healthy and vibrant community. The County performs very well on the key indicators of well-being, which includes the Wellington-Dufferin-Guelph report cards on the well-being of children. In 2019, the County of Wellington was ranked 13th overall in MacLean magazine's Canada's safest places to live.¹

Between 2011 and 2016, Wellington County's population increased from 86,000 to over 90,000. By 2041, Wellington County's population is projected to reach 134,500.² The population of Wellington County is well-educated, with approximately 53% of working-aged residents holding a post-secondary credential.² The County also holds a higher share of residents with skilled trades or apprenticeship certifications than the surrounding areas.



Spanning an amazing 2,600 square kilometers, the County of Wellington is comprised of seven municipalities and stretches from Grey County to the City of Hamilton.^{3,4} This collaborative approach is crucial in maintaining and enhancing the safety and well-being of Wellington County residents.



This plan addresses the unique nature of Wellington County and relies on the teamwork of many sectors, including municipalities, police, paramedics, education, WDGPH, healthcare, social services, and community based human services agencies. In other words, people in need of help receive the right response, at the right time, and by the right service provider.

Community Safety and Well-Being Planning in Ontario: An Emerging Approach

The concept of community safety and well-being planning has been championed by the Ontario working group on Collaborative, Risk-Driven Community Safety (a subcommittee of the Ontario Association of Chiefs of Police), the Ontario Ministry of Community Safety and Correctional Services and The Ontario Ministry of the Solicitor General.

In 2014, the Ontario working group released the **New Directions in Community Safety report** which encourages community safety and well-being planning within

4 levels of intervention:⁵

- 1. Social Development**
- 2. Prevention**
- 3. Risk Intervention**
- 4. Emergency Response.**

1 Social Development

Individual and community wellness is promoted and maintained by addressing the underlying causes of social issues through upstream approaches. This includes opportunities for employment, income, adequate housing, access to education and other supports that promote social and economic inclusion.

2 Prevention

Proactive strategies are known and identified risks that are likely to result in harm to individuals or communities if left unmitigated.

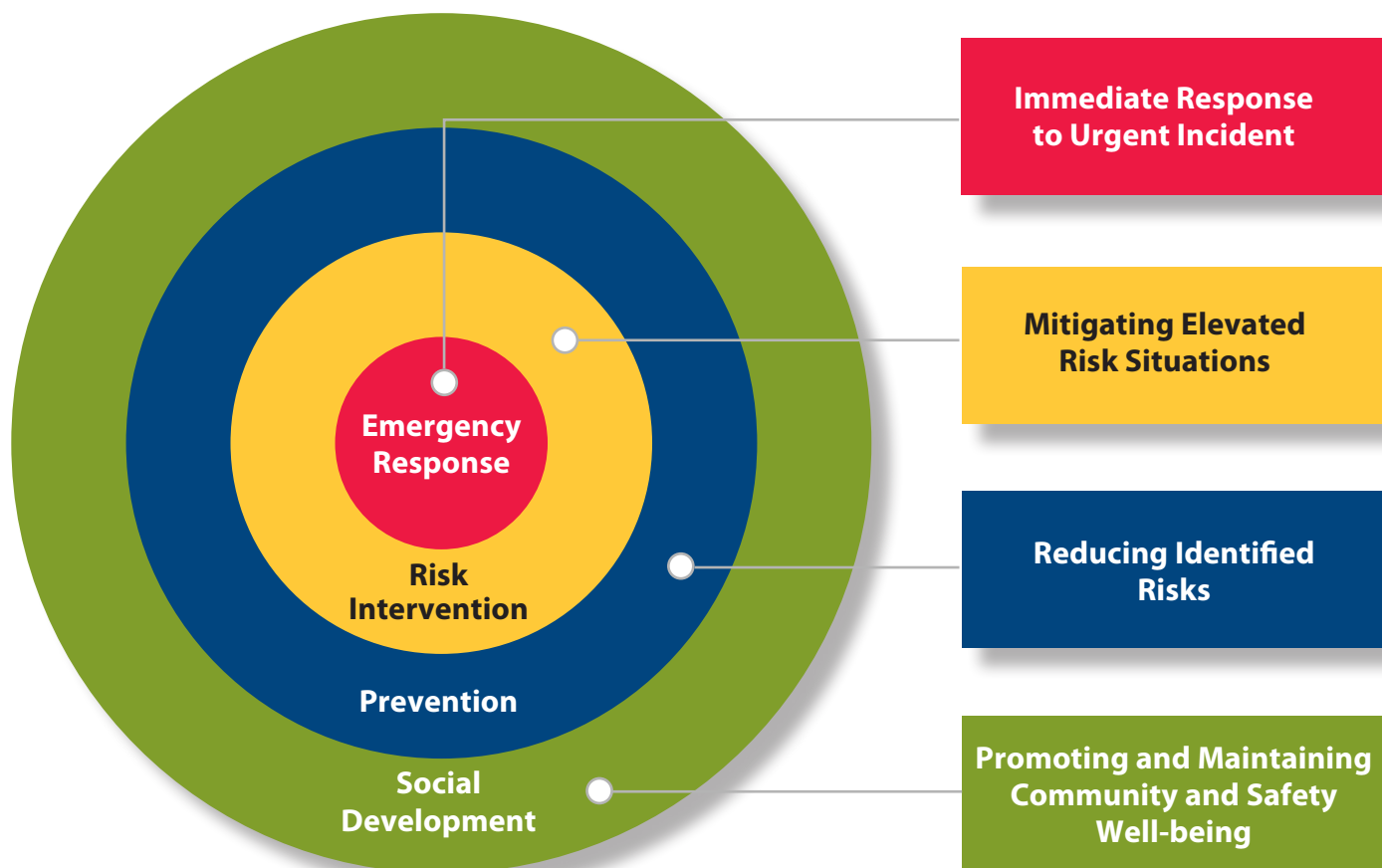
3 Risk Intervention

Situations of acutely elevated risk are identified and interventions are immediately mobilized to respond to situations before an emergency or crisis-driven response is required.

4 Emergency Response

Addressing circumstances that require intervention by first responders, must include: police, paramedics, and other crisis-driven services.

The approach is holistic and requires planning at all levels of intervention. The approach also recognizes it is beneficial to maximize efforts in the outer zones to reduce harm to individuals, who have their needs met before the situation escalates into a crisis, and to prevent increases in demand for costlier, downstream interventions with police and other emergency response systems.



Wellington County is performing well on many indicators of community safety and well-being, but like all communities, has priority areas that require attention.



15,927 Days spent in hospitals due to fall related injuries (2010 - 2015)^{6,7}



638 Potential Years of Life lost to Intentional Self Harm (2010 - 2015)^{6,7}

2780 Emergency Department Visits caused by a motor vehicle collision (2010 - 2015)^{6,7}



302 Calls to Victim Services in 2019⁸

69 Alcohol involved in MVC in 2019⁸



2787.50 officer hours related to Mental Health occurrences in 2020⁹

41% of 5,165 households spent 30% or more on household income or shelter costs²



Wellington County has the highest proportion of older adults in Wellington Dufferin Guelph with 33.1% of the population consisting of individuals over 55 years of age.²

Towards Collaboration and Action to Enhance Community Safety and Well-Being in Wellington County

The vision of Safe Communities Wellington County is to make Wellington County the safest and healthiest place to live, learn, work and thrive in Canada. Wellington County received the Safe Community designation in 2013 with the help of community stakeholders, including the Safe Communities Wellington County Committee, local municipal councils, emergency services, WDGPH, UGDSB and the WCDSB. A Safe Community promotes safe and healthy behaviours and protects people from hurt and harm. By working collaboratively and focusing on the outer rings of the Zones of Intervention, Wellington County will make a greater impact on the safety and wellness of our residents.

The Safe Communities Leadership Table will continue the work it has done over the past seven years and will now provide the framework for the Community Safety and Well-Being Plan.

Community Consultation

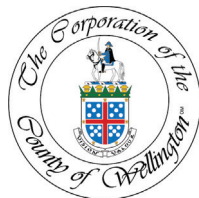
Community Scan

The Community Scan identifies organizations whose services compliment and/or duplicate the prevention activities of Safe Communities Wellington County. To strengthen our efforts, it is essential to engage with organizations in the County that have similar priorities. All organizations are based out of Wellington County, with exception of Lions Quest Canada.

Groups involved in the Community Scan Process



Canadian Mental Health Association
Waterloo Wellington



CRIME STOPPERS
GUELPH WELLINGTON
1-800-222-TIPS (8477)
www.csgw.tips





FIRE SERVICES WELLINGTON COUNTY



Fergus Educational Services



SENIORS' CENTRE for EXCELLENCE



Community Survey

The Community Survey was developed in consultation with Safe Communities Wellington County and Parachute and administered online by Qualtrics. Paper copies were made available at all 14 library branches in Wellington County along with lock-boxes for submission and the incentive-ballot drop box. A WDGPH Ethics Consultation was not necessary for the survey because it did not collect any personal information or personal health information. However, a survey information sheet and consent form were developed following the guidance of the WDGPH Ethics Committee. Consent forms accompanied both the online and paper versions of the survey. The survey was promoted on social media and the social media accounts of our various community partners. SCWC advertised the community survey in the Wellington Advertiser, through an official media release, and on the radio. The paper copy responses were entered into Qualtrics by a member of the Healthy Communities and Public Policy Team at WDGPH. A total of 288 responses were received with 208 of these responses determined to be valid for use in the analysis. Invalid responses were either not from Wellington County, consent was not indicated, or the surveys were incomplete. The valid survey data were cleaned and presented by a team member from the Health Analytics department at WDGPH.

Priority Setting Exercise (PSE)

Sixty-two individuals, representing over 30 Wellington County organizations, service agencies, and departments, attended the PSE. The exercise consisted of two pillars, the presentation of data, and the qualitative assessment of statistics. Data on emergency room visits, hospital stays, and mortality statistics were presented for seven categories; pedestrians and cyclists, motor vehicles (on and off road), agricultural, machinery and tools, sports and recreation, falls, accidental poisonings, and intentional self-harm. Participants were given the opportunity to contextualize the data to ensure they understood the injury categories and the impact they have on the safety of residents living in Wellington County. During the qualitative assessment, each participant was given a chance to rank two pre-selected injury categories, per table, based on a selection of statements.



Reporting of Priorities

Following the completion of the community scan and the community survey, the two pillars of the priority setting exercise were combined to determine the ranking of injuries. The most important injuries to prevent in Wellington County are:



1. Motor Vehicle Collisions



2. Falls



3. Intentional Self Harm



4. Accidental Poisonings



5. Pedestrian and Cyclists



6. Sports and Recreation



7. Agricultural, Machinery and Tools

The data from the community consultation will help guide our programmes and ensure an impact is made in each local municipality throughout Wellington County. We will review our existing partnerships to determine how we can address our top three priorities and all seven injury categories.

Wellington County's Model for Collaboration, Planning and Action

The issues that affect the safety and well-being of communities are often complex and require collective involvement, effort and action from many partners. Some issues can be addressed at an individual level. Other issues require a system-based approach. Wellington County's Model for collaboration, planning and action outlines a flexible and action-oriented process. This model will identify and respond to a wide range of system-level issues that impact safety and well-being in Wellington County.

The Model is designed to facilitate three core functions:

1. To make Wellington County, the safest and healthiest place in which to live, learn, work and thrive in Canada.
2. Address system-level barriers and gaps in the human services system that negatively impact people who are vulnerable and result in increased demand on emergency crisis driven services.
3. Prevent and reduce the severity of bodily injuries caused by external mechanisms, such as accidents.

The Safe Communities Leadership Table will:

- Continue to convene leaders from organizations with system planning accountability in Wellington County.
- Anticipate issues and service gaps using enhanced data and knowledge sharing.
- Achieve greater coordination between existing issues and planning tables and consolidate where appropriate.
- Ensure Wellington County is ready to respond when emerging issues occur.
- Create opportunities to align resources and efforts in order to increase impact on identified community safety and well-being priorities.



Safe Communities Wellington County Process Chart



How does Safe Communities Wellington County operate?

Safe Communities Wellington County is directed by the Leadership Table and the Executive. We are supported by the County of Wellington, the Police Services Board, and Wellington County's Model for collaboration, planning and action. The Leadership Table includes community leaders and organizations with key system planning accountability in the human services system. The Leadership Table has a broad mandate that addresses known, emergent and anticipated community issues. Issues are prioritized for Action Groups. If an issue is not specific to an Action Group, the Leadership Table will determine the best response. In some instances, an organization or municipality within the Leadership Table will be better positioned to take direct action.

**Community members and partners are essential to the Model.
They are active members of our Action Groups and help provide solutions.**

Community
members and partners
are essential to the model.

Governance and Support

The Safe Communities Leadership Table will report to the Police Services Board on a quarterly basis. Members of the Leadership Table will report to their respective organizations to ensure information is being shared appropriately. The action groups will be required to provide bi-monthly updates and a full annual report to the Leadership Table. Further, the Leadership Table will approve an annual budget and will provide the Treasury Department of the County of Wellington with the budget information.

Wellington County, the Wellington County OPP, and the Wellington County Police Services Board will provide staff and volunteer support to Wellington County's Community Safety and Well-Being Plan.

Responsibilities will include:

- Supporting the issue identification and Leadership Table response process.
- Providing advice and recommendations to support the Safe Communities Wellington County Leadership Table.
- Identifying community partners and liaising with the Safe Communities Wellington County Leadership Table.
- Engaging with the community on safety and well-being issues, and those with lived experiences of the issues being considered for a Leadership Table response.

Safe Communities Wellington County Leadership Table

The Leadership Table will be the ongoing custodian of the Community Safety and Well-Being Plan for Wellington County. The key roles for Safe Communities Wellington County Leadership Table are:

- Identify community safety and well-being issues and determine the best course of action such as adding an Action Group, tasking an Action Group, or identifying a body to address the issue.
- Provide support to action groups, municipal safe community groups, and organizations by providing resources, funding, and other support as required.
- Actively recruit individuals and organizations to sit on the Leadership Table and Action Groups.
- Perform environmental scans to identify issues and target individuals and organizations for recruitment to the Leadership Table.
- Provide a quarterly update to the Police Services Board on issues and plans, and present annually on progress and achievements.
- An annual update to the County of Wellington.
- Regularly seek input and data from community partners.

Current Membership of the Safe Communities Leadership Table:

- Wellington County Council
- Wellington County Ontario Provincial Police
- Wellington County Staff
- Guelph Wellington Paramedic Service
- Wellington Dufferin Guelph Public Health
- Municipal representation of Fire Departments in Wellington County
- Representation from each of the 7 Municipal Councils
- Representatives from a wide variety of community organizations

Current Members of Safe Communities Wellington County Executive:

- Current Co-Chairs of Leadership Table
- Appointed Member from Wellington County OPP
- Appointed member from Guelph Wellington Paramedic Service
- Appointed member from Wellington Dufferin Guelph Public Health
- Appointed member from Wellington County Council
- Appointed member from Wellington County Staff
- Safe Communities Programme Coordinator (Ex-Officio member)

Data Analytics and Decision Support

The Leadership Table will review population and programme data in order to make informed decisions. Key objectives will involve:

- Identifying issues and trends to support active and new Action Groups.
- Supporting the data requirements of Safe Communities Leadership Table.
- Sharing data within privacy protocols.
- Monitoring community safety and well-being indicators for Wellington County.
- Supporting municipalities and Safe Communities groups community safety and well-being profiles to guide planning efforts.

Issue identification and Leadership Table Response Process



Data Analytics

Community safety and well-being data will be collected from a variety of sources, including community and municipal engagement, research, and environmental scans. Acquired data will be analyzed to identify issues.

Issue Assessment

The Leadership Table will assess the issues and determine the best course of action. The issue may be assigned to an existing Action Group or the Leadership Table may create a new Action Group to address the issue.

Action Group

The Leadership Table will create Actions Groups to address issues as required. The appointed chair of the Action Group is responsible for recruiting members. If an existing body is already well-positioned to address the issue, the Leadership Table may ask that body to assume the role of an Action Group.

Plan

The Action Groups will develop a plan to address the issue. The plan will set measurable goals, objectives and strategies to combat the issue. The Action Group will identify any required resources and funding for the plan. The Safe Communities Leadership Table will need to endorse the plan before it can be implemented.

Implementation

Once endorsed by the Leadership Table, the Action Group will implement the plan.

Evaluation

Action Groups will report bi-monthly at Safe Communities Leadership Table meetings and will provide a final report at the conclusion of the issue (where possible). There will be an ongoing evaluation of outcomes and impact to determine whether the plan is effective or whether a new plan will need to be implemented.



Preliminary Issues for Attention

The Safe Communities Leadership Table has identified and prioritized key areas within Wellington County that require attention. These issues were identified in conjunction with the priority setting exercise, environmental and community scan, and qualitative and quantitative data analytics.

1. Reduce motor vehicle collisions throughout Wellington County

Between 2010 and 2015, motor vehicle collisions in Wellington County have accounted for over 1,600 hospital stays and a potential of 437 years lost.^{6,7} Young Canadians represent 13 percent of the licensed driving population, but account for almost 20 percent of motor vehicle deaths and injuries.¹⁰ Aggressive, distracted and impaired driving will be an area of focus in the Prevention and Social Development rings of the Zones of Intervention (Figure 2).⁵ The Wellington County Roads Department, Wellington County OPP, and WDGPH are working together to identify the areas of greatest risk for motor vehicle collisions in the County. This Action Group will help determine the best course of action and prevent serious injuries and fatalities throughout Wellington County.

2. Reduce instances of falls in the older population

Between 2010 and 2015, fall-related injuries accounted for 15,927 days spent in Wellington County hospitals.^{6,7} The average hospital stay was 65 days.⁷ Falls are the leading cause of emergency department visit and are four times more likely than the second ranked reason of sports and recreation injuries. The Victorian Order of Nurses, Seniors Centre for Excellence, Family Health Teams, and Guelph Wellington Paramedic Service will take a collaborative approach to address fall-related injuries. The Falls Action Group will further strengthen falls prevention education and help promote physical exercise to reduce the risk of falls.

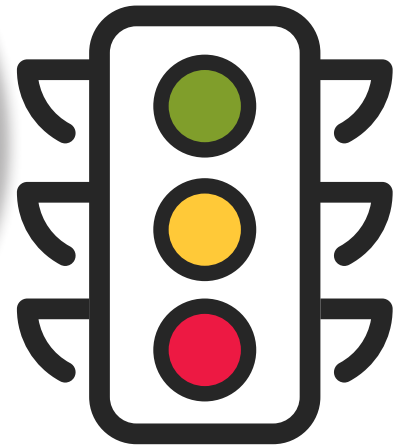
3. Provide easier access to mental health supports and decrease the escalating numbers of intentional self harm

From 2010 to 2015, 30 deaths and 638 years of life were lost from intentional self-harm injuries.⁶ The CMHAWW, the Suicide Awareness Council, UGDSB and WCDSB will use current data analytics and evidence based outcomes to strengthen existing programmes and develop new action plans to address intentional self-harm.

4. Decrease the amount of Accidental Poisonings throughout Wellington County

From 2010-2015 Accidental poisonings accounted for nearly 1000 emergency department visits.⁶ Accidental poisonings fall into two categories: accidental poisoning of young children from items within reach of a child, or overdose-related accidental poisonings in teen and adult populations. The Guelph Wellington Drug Strategy, WDGPH, and other outside agencies, like the Ontario Poison Centre, will help the Leadership Table determine effective strategies to prevent both types of accidental poisonings.

“ Almost 20% of motor vehicle collisions are caused by teens and young adults. ”



5. Coordinate efforts with all seven municipalities to create an action plan to improve the safety of vulnerable road users (Cyclists and Pedestrians)

Over 1,200 emergency department visits from 2010 to 2015 involved pedestrians and cyclist accidents.⁶ By 2031, Wellington County's population is expected to grow to 122,000.² Therefore, vehicular traffic will increase to the detriment of vulnerable road users. To protect vulnerable road users, the County of Wellington and all seven municipalities will work to strengthen existing programmes, educate road users, and identify new avenues to calm roads across the County.



6. Increase safety protocols within organized sport organizations

Sports and recreation related injuries accounted for over 4,000 emergency department visits between 2010 and 2015.⁶ This was prior to the province of Ontario's implementation of Rowan's Law in 2018. In order to prevent sports and recreation related injuries we must strengthen concussion and safety protocols and rely on the expertise of sports medicine, physiotherapy agencies, and sports organizations in Wellington County.



7. Coordinate efforts to reduce agriculture related injuries

Injuries sustained from agricultural machinery and tools accounted for over 1,800 emergency department visits between 2010 and 2015.⁶ Rollovers and improper safety protocols in grain silos are two major issues faced by Wellington County farmers. The vast farmland across Wellington County, spanning 466,400 square kilometers, makes addressing agricultural injuries a priority.¹¹

**“Over 1,800
Emergency Department
visits were made by injuries
sustained from agricultural
machinery and tools.”**





Moving Forward

Wellington County is continuing on a collaborative path to strengthen our bonds with each other and increase the safety and well-being of the residents who live across our extraordinary County. Touted as one of Canada's safest communities, Wellington County's impact on safety and wellness will only grow as we further develop our action plans together. We are poised to identify, and respond to, emerging issues. We will collectively work on evidence informed decisions that will make Wellington County one of the safest places in which to live, work, and thrive in Canada.

Leading Wellington County Based Practices: Enhancing Community Safety and Well-Being within the Four Levels of Intervention

The County of Wellington, Wellington County OPP and our community partners will continue to respond to community needs through a range of projects spanning four levels of intervention; social development, prevention, risk intervention, and emergence response.



1 Social Development

Guelph and Wellington Task Force for Poverty Elimination

The Guelph and Wellington Task Force for Poverty Elimination is informed by diverse voices of experience and works collaboratively to take local action and advocate for system and policy change to address the root causes of poverty. The four pillars of this task force are described below.

Advocate and Inform

- Champion and give voice to the need for system and policy change that address the root causes of poverty.
- Inform stakeholders and decision-makers about local needs and priorities to influence policy and service design, delivery and evaluation.

Collaborate and Involve

- Bring people together with diverse skill sets to address priority issues through collective effort and expertise.
- Identify meaningful opportunities for stakeholders and community members to be involved in poverty elimination efforts in our community.

Communicate and Engage

- Communicate and engage with the community to educate and increase awareness, shift attitudes, and further priority issues, big ideas, specific policies, community needs, and aspirations needs, and aspirations.

Research and Mobilize Knowledge

- Conduct community-based research to enhance shared understandings of complex issues and inform action and advocacy efforts of the Guelph and Wellington Task Force for Poverty Elimination.
- Share knowledge to build capacity, inform decisions, policies and system change.

Wellington Guelph Drug Strategy

The Wellington Guelph Drug Strategy is a coalition of partner agencies and members of the lived experience community, who are working to implement a 4-Pillar drug strategy in the municipalities of Wellington County and the City of Guelph. The 4-Pillars include: prevention, harm reduction, treatment and recovery, and community safety. Our cross-sectoral partnerships acknowledge the integral role that each pillar plays, and in many instances, weave the pillars together in our strategies and responses. In doing so, we have made many successful strides towards our goal of reducing the impacts of substance misuse in our communities.

The Wellington Guelph Drug Strategy 4 pillars fall under the social development and prevention rings within the levels of intervention.

Wellington County Community Safety Services Unit

Covering both social development and prevention, the Community Safety Services Unit is a crucial step toward reducing injuries due to motor vehicle collisions and aggressive driving on Wellington County roads. The Wellington County Community Safety Services Unit will work with Crime Stoppers, Safe Communities Wellington County, CMHAWW, UGDSB, WCDSB and internal departments within the Wellington County OPP, and other Wellington County stakeholders.

2 Prevention

Project Lifesaver

Wellington County OPP works in collaboration with Victim Services Wellington and the Guelph Police Service to bring Project Lifesaver to the City of Guelph and Wellington County. The programme is designed to assist caregivers with finding loved ones who have wandered off due to Alzheimer's, autism, and other forms of cognitive impairment.

Participants wear a battery-operated wrist transmitter that emits a unique radio frequency every second, 24 hours a day.

To activate Project Lifesaver care-givers notify Wellington County OPP when a loved one has gone missing and specially-trained police officers use a portable directional antenna to search for and locate the missing person.

Local OPP currently have 12 trained search specialists and two trainers. Each year the trained members of the OPP receive their recertification through day-long classroom and practical scenario training.





Community Paramedicine and Remote Patient Monitoring

Community paramedicine is an evolving model of community-based health care in which paramedics function outside their traditional emergency response and transport. The programme aims to support individuals to access resources in order to reduce dependency on 911 and possible transports to the local emergency department.

The main goals of community paramedicine are to:

- Reduce the number of repeat emergency medical services calls.
- Reduce the number of low acuity patients in the emergency department transported by paramedics.
- Enable vulnerable/at risk individuals and older adults to live safely in their own homes and reduce costly care, such as acute care hospitals and long-term care.

Remote Patient Monitoring

People that suffer from congestive heart failure, diabetes and/or chronic obstructive pulmonary disease (COPD) will be monitored remotely through technology to recognize exacerbations and trends to improve patients' health awareness and decrease dependency on emergency services and hospital admissions.



Canadian Mental Health Association of Waterloo Wellington

YouthTALK

YouthTALK is a program of the CMHA Waterloo Wellington that strives to bring youth together through mental health awareness. YouthTALK activities, content and presentations are created by youth for youth. The YouthTALK Regional team supports initiatives across the Wellington and Dufferin Counties. These activities encourage youth from all areas to participate, such as social media wellness challenges, webinars and a yearly conference. The YouthTALK Facilitator also supports teams within both Upper Grand District School Board and the Wellington Catholic District School Board schools. In-school teams run projects and activities throughout the year during lunch hour or as part of larger assemblies. The YouthTALK members on the Regional Team and the In-School Teams really bring mental health and wellness to the forefront for so many youth across our region.

Here4Hope.ca

Here4Hope is the Wellington County community-based life promotion suicide prevention project. The vision for the project is that Wellington is a community where suicide is prevented, and everyone lives with hope and resilience.

Everyone has a role to play in preventing suicide including formal supports, community agencies, associations, workplaces and individuals. Here4hope is working to strength the efforts of existing programming as well as currently focusing on two identified priority areas: support after suicide and workplace wellness initiatives at the County of Wellington.

By adopting a whole community approach to life promotion and suicide prevention the community ensures there is a continuum of evidenced based supports and services available that work together to create a safety net for those touched by suicide. Prevention, intervention and postvention programming that focuses on promoting life, intervening with at risk populations and responding in the aftermath of a death by suicide. This holistic approach is consistent with all four levels of intervention for community safety.

3 Risk Intervention

Seniors at Risk Community Response Network of Guelph-Wellington

This network is a coordinated community response to vulnerable, or at risk seniors, including those experiencing elder abuse living in the community. This collaborative approach across health and social services, legal, and police services works to provide:

- Access to help for vulnerable older adults and their families, especially those who have experienced, or are at risk of, abuse.
- Referral to community resources and informal seniors' groups when appropriate.
- Temporary safe beds available through selected retirement homes with regard to elder abuse.
- Consultation for health professionals through the response network.

4 Emergency Response

Integrated Mobile Police and Crisis Team (IMPACT)

IMPACT is run in partnership with the CMHAWW and Wellington County OPP.

The programme enables specially-trained Mental Health Clinicians to attend mental health-related calls along-side officers.

The goal of the programme is to ensure that residents have better health outcomes by receiving the most appropriate community-based crisis response at the time of need.



Mental Health

Endnotes

1. Brownell, Claire. (2018, November). These are the safest places in Canada. Maclean's Magazine. <https://www.macleans.ca/news/canada/canadas-safest-places-2019/>
2. Grodzinski E. (2018). A Place to Call Home: A 10-year Housing and Homelessness Plan for Guelph-Wellington - Five Year Update (2019-2023). Guelph, ON; County of Wellington.
3. County of Wellington. (2021). Wellington Area Breakdown. <https://www.wellington.ca/en/resident-services/pl-wellington-area-breakdown.aspx>
4. County of Wellington. (2021). Getting Here. <https://www.wellington.ca/en/business/EDGettingHere.aspx>
5. Naqvi, Y. (2016). Strategy for a Safer Ontario: Public discussion paper. Government of Ontario. <https://www.ontario.ca/page/strategy-safer-ontario-public-discussion-paper>
6. Canadian Institute for Health Information. (2021). National Ambulatory Care Reporting System metadata (NACRS). <https://www.cihi.ca/en/national-ambulatory-care-reporting-system-metadata-nacrs>
7. Canadian Institute for Health Information. (2021). Discharge Abstract Database metadata (DAD). <https://www.cihi.ca/en/discharge-abstract-database-metadata-dad>
8. Richardson, Paul. (2020, February 12). 2019 Year-End Detachment Commander's Report: Report for the County of Wellington Police Services Board. Ontario Provincial Police County of Wellington Detachment.
9. Richardson, Paul. (2021, February 10). 2020 Year-End Detachment Commander's Report: Report for the County of Wellington Police Services Board. Ontario Provincial Police County of Wellington Detachment.
10. Emery, P.C, Mayhew, D.R., & Simpson, H.M. (2008). Y Youth and Road Crashes: Magnitude, Characteristics and Trends. Traffic Injury Research Foundation. Ottawa, Canada
11. Ministry of Agriculture, Food and Rural Affairs. (2016). Farm Land Area (Acres) Classified by Use of Land, By County, Ontario – 2016. http://www.omafra.gov.on.ca/english/stats/census/cty32_16.htm.

