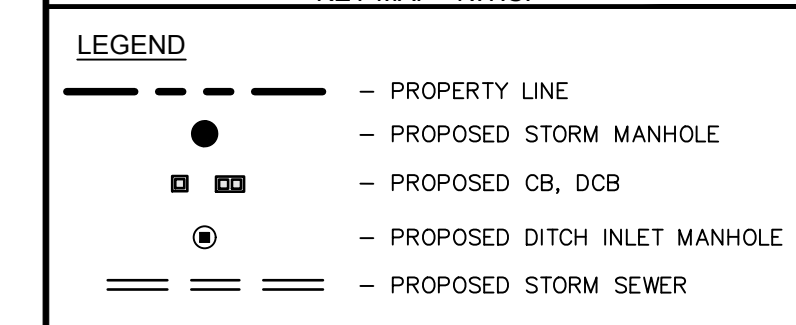
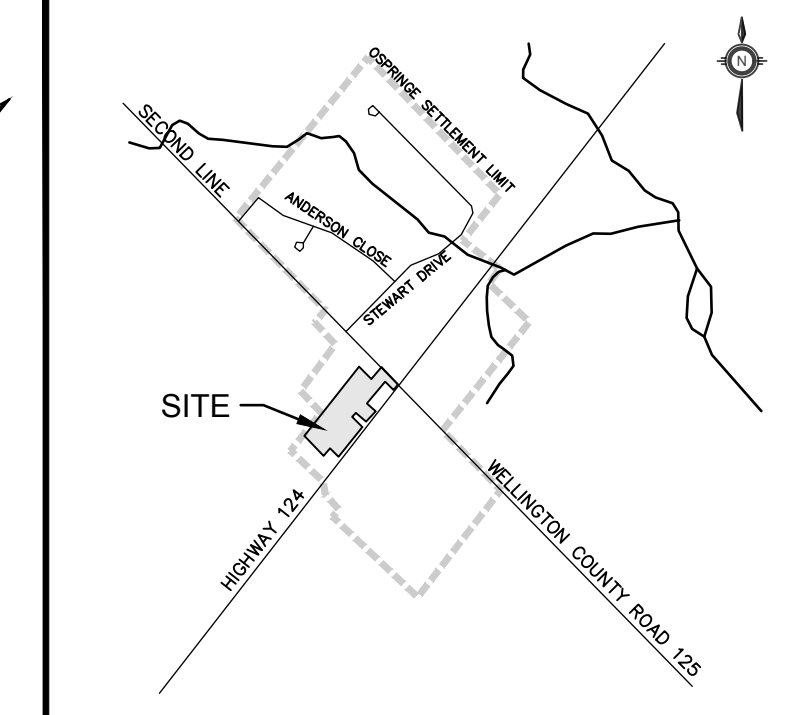
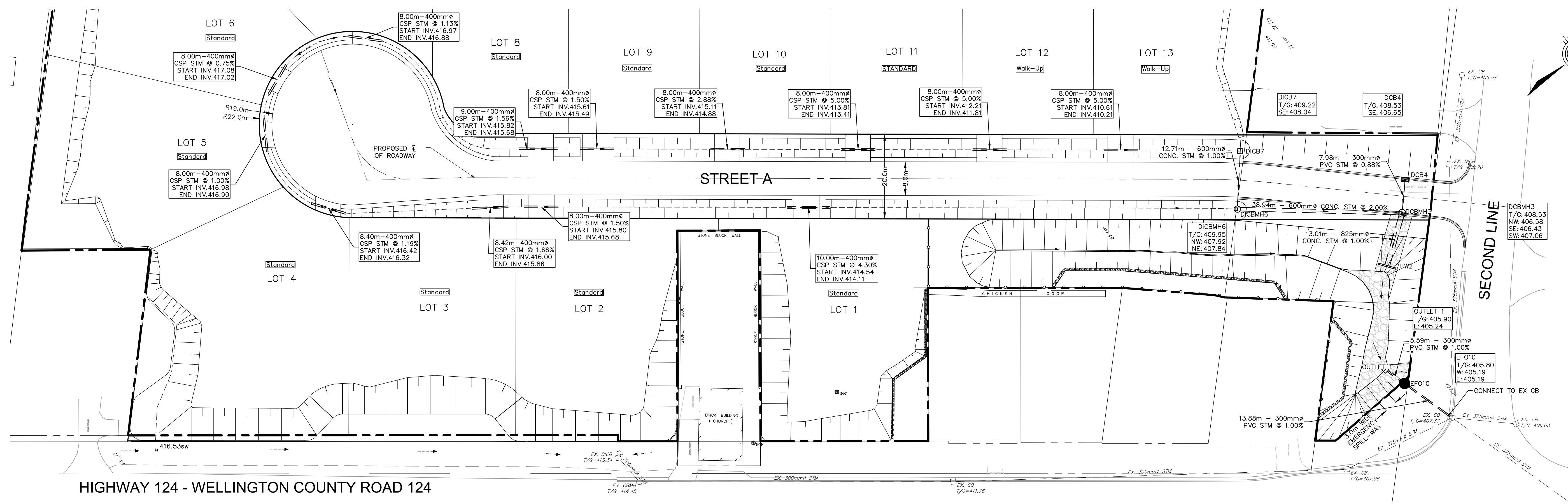
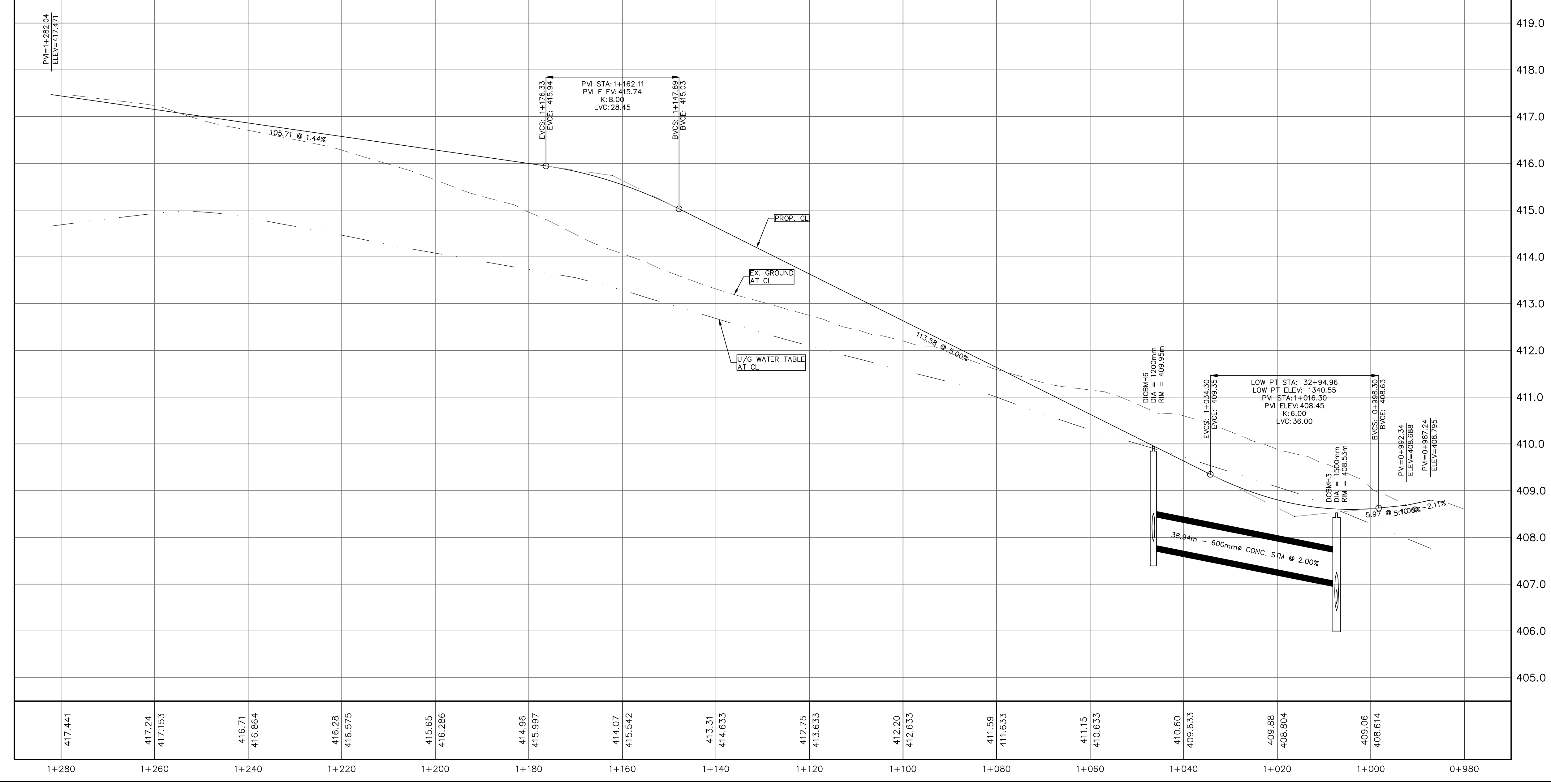


FILE: S:\111618_Ospringe\111618_09\Drawings\596\Sub\Current\111618E_LAYOUT.PPP CTR: AIA Standard-Full.ctb SAVED BY: Manual.buried, 2021-Jun-23 10:02 AM



HIGHWAY 124 - WELLINGTON COUNTY ROAD 124

STREET A



NOT FOR CONSTRUCTION

BENCHMARK - ELEVATION
 TOPOGRAPHIC SURVEY INFORMATION BY IBI GROUP
 SURVEYORS ON SEPTEMBER 19, 2017.

LOCATION DESCRIPTION:
 798459 - TWO STOREY RED BRICK HOUSE ON EAST SIDE OF HWY 24, 81.5 M SOUTH OF WEST JCT OF HWYS 24 AND 25 AT OSPRINGE, 1.3 KM NORTH OF ERIN 1ST LINE AND 10.1 M EAST OF CENTRELINE OF HWY 24. TABLE IS SET HORIZONTALLY IN NORTH FACE OF STONE FOUNDATION, 2.46 M EAST OF N.W. CORNER, 86 CM BELOW BRICKWORK AND 33 CM ABOVE GROUND LEVEL.
 ELEVATION: 409.903

#	DATE	BY	REVISIONS	DESCRIPTION
1	2021-06-28	K.C.	SECOND SUBMISSION TO TOWN OF ERIN	

APPROVALS	

IBI GROUP
 101 - 410 Albert Street
 Waterloo ON N2L 3V3 Canada
 tel 519 585 2255 fax 519 585 2269
 ibigroup.com

OSPRINGE SETTLEMENT AREA
 COUNTY OF WELLINGTON

DRAFT PLAN OF SUBDIVISION
 OSPRINGE DEVELOPMENT

PLAN AND PROFILE

DESIGNED BY: P.CLOUTIER SCALE HORIZ: 1:500
 DRAWN BY: P.CLOUTIER SCALE VERT: 1:50
 CHECKED BY: K.COBBE FILE NUMBER: 111618
 DATE: 2019-10-04 SHEET NUMBER: PP