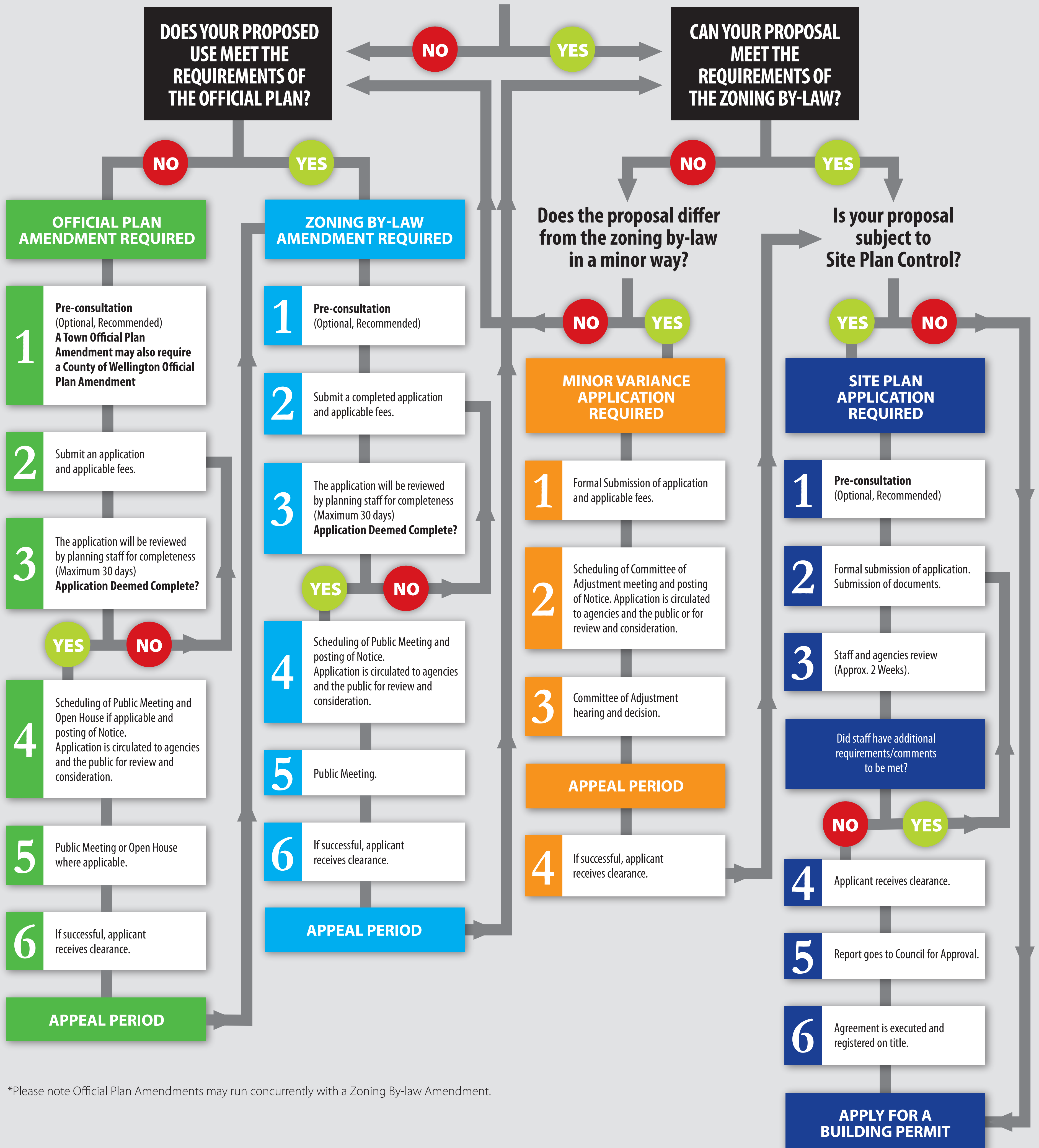




# DEVELOPMENT PROCESS

This schematic is a guide to the development processes within the Town of Erin. It provides information in a step-by-step format for planning applications including Official Plan Amendments, Zoning By-law Amendments, Minor Variances and Site Plan Control.

## IS YOUR PROPOSED USE PERMITTED AS PER THE TOWN OF ERIN ZONING BY-LAW?



\*Please note Official Plan Amendments may run concurrently with a Zoning By-law Amendment.