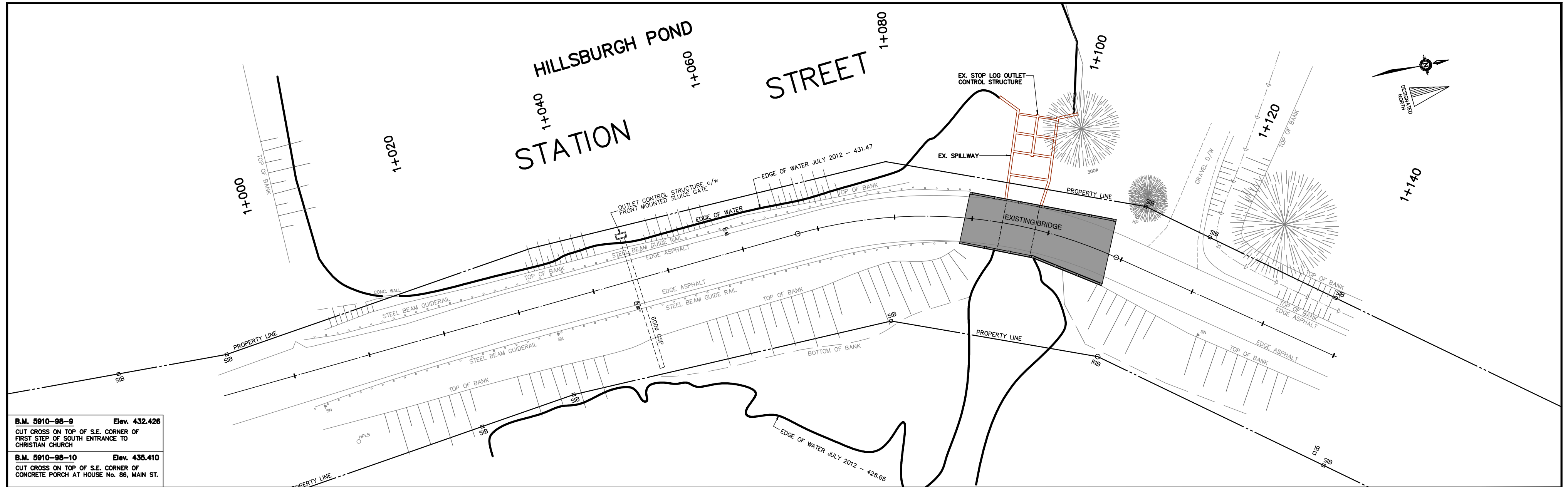
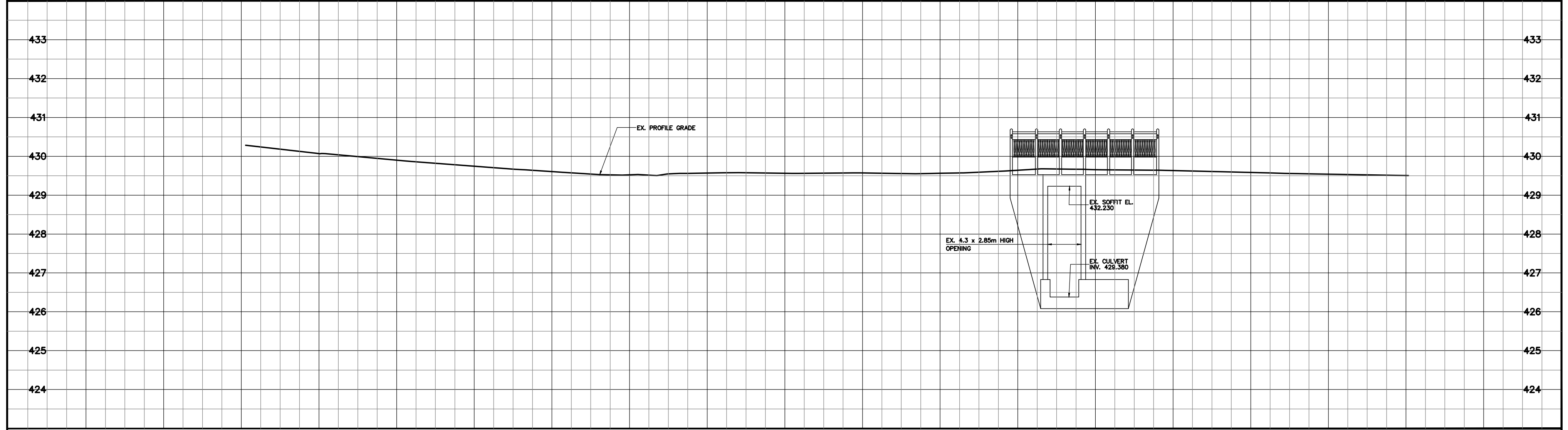


EXISTING CONDITIONS - PLAN & PROFILE



B.M. 5910-98-9 Elev. 432.426
 CUT CROSS ON TOP OF S.E. CORNER OF
 FIRST STEP OF SOUTH ENTRANCE TO
 CHRISTIAN CHURCH

B.M. 5910-98-10 Elev. 435.410
 CUT CROSS ON TOP OF S.E. CORNER OF
 CONCRETE PORCH AT HOUSE No. 86, MAIN ST.



NOTES
 THE LOCATION OF UTILITIES IS APPROXIMATE ONLY
 AND SHOULD BE DETERMINED BY CONSULTING THE
 MUNICIPAL AUTHORITIES AND UTILITY COMPANIES
 CONCERNED. THE CONTRACTOR SHALL PROVE THE
 LOCATION OF UTILITIES AND SHALL BE RESPONSIBLE
 FOR ADEQUATE PROTECTION AGAINST DAMAGE.

No	DATE	REVISION	INITIAL

**REHABILITATION OF
 STATION STREET
 (HILLSBURGH)**

TOWN OF ERIN
 5684 WELLINGTON ROAD No. 24
 R.R. #2 ERIN NOB 1Z0

PLAN AND PROFILE

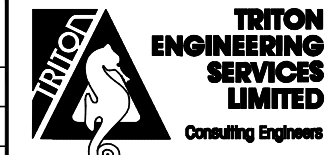
PROJECT No
A4685

DRAWN BY: d.r.t.
(initials)

CHECKED BY: C.P.C.

APPROVED BY: P.F.Z.

DATE: APRIL 2016



SCALES
 1:375 HORIZONTAL 1:75 VERTICAL

DRAWING NUMBER **01**