



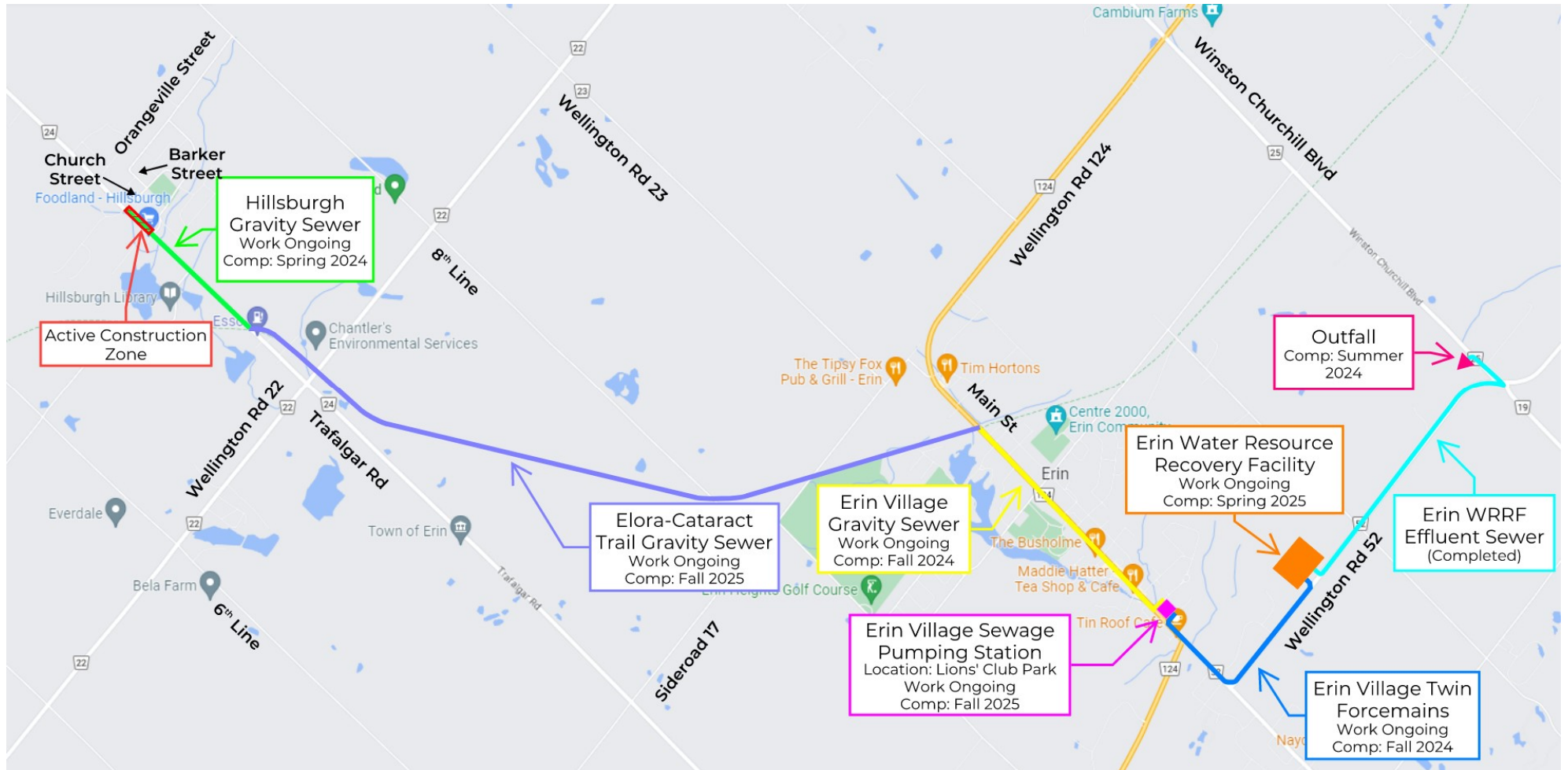
Construction Liaison Meeting

Erin Wastewater Servicing Project

Project Update

April 30, 2024

Construction Work Areas



Hillsburgh Gravity Sewer

Consists of the installation of a **gravity sewer, watermain and roadway reconstruction** along **Trafalgar Road** between Upper Canada Drive / Church Street and the Elora-Cataract Trail (construction area), including the extension of water and sewer services up to the property line for each property along the alignment.

Due to the open-cut method of construction, **through-traffic will not be permitted** through the active construction zone. **Access to local homes and businesses as well as emergency services will be maintained** at all times.



- Linear Work | Sewer, watermain and services to property line is complete.
- Road Work | Roadway reconstructon from the Trail to Station St. is complete with top course asphalt to be completed Spring 2024.

Roadway reconstructdion from Station St. to Mill St. requires concrete curb and sidewalk with top course asphalt to be completed in Spring 2024.

Roadway construction from Mill St. to Upper Canada Drive to be completed in Spring 2024.

Trafalgar Road Status | Trafalgar Road is currently closed to through traffic and will remain closed to through traffic during the Winter 2024. Trafalgar Road accessible to Mill St. from the south for local traffic during construction.

BUSINESSES ARE

DURING CONSTRUCTION

Elora Cataract Trail Gravity Sewer

The planned construction along the Elora Cataract Trail will occur between Trafalgar Road and Main Street / Wellington Road 124, **connecting the future Hillsburgh and Erin Village wastewater collection systems** via gravity sewer. A new watermain connecting Hillsburgh to the water distribution system in Erin Village will also be installed, and twenty-six (26) culverts crossing the trail between Hillsburgh and Erin Village will be upgraded.

Due to the open-cut construction method required for the installation of the gravity sewer along the Trail, the Town’s Contractor will have to remove trees and shrubs along the pipe alignment. **Tree removals have been minimized to the greatest possible extent.**

Once the gravity sewer installation is completed, the Trail pathway will be restored to a better condition and all trees that are removed will be replaced with approximately four times as many new trees. In all, approximately **20,000 trees will be planted** back onto the trail and on other properties within the Town

Tree Removals

Tree removal work has been completed.

Culvert Upgrades & Linear Works

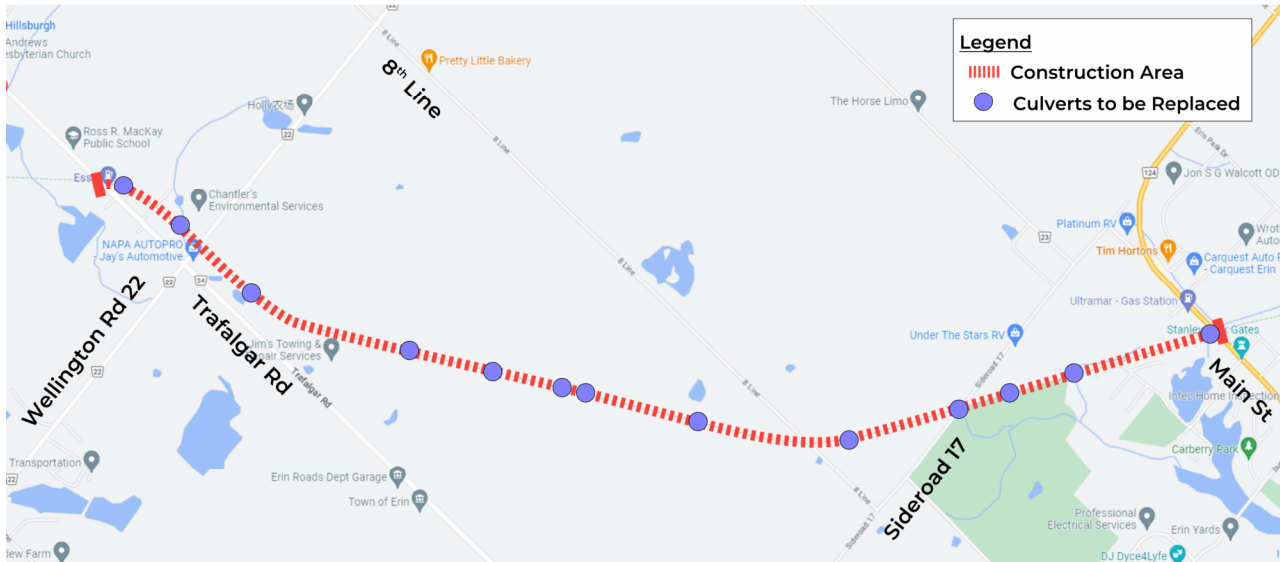
Installation of construction site fencing is ongoing.

The culvert upgrades and linear work is anticipated to start in Spring 2024.

It is anticipated that the culvert and linear works will be completed by the fall of 2025, including all restoration.

Trail Status

The Elora-Cataract Trail is currently closed and will be closed for the duration of the culvert upgrades and linear works.



Erin Village Gravity Sewer & Twin Influent Forcemains

The sanitary gravity sewer and twin forcemain construction in Erin Village along Main Street between the Elora Cataract Trail and Dianne Road, and along Water Street, commenced in July 2023.

The sewer installation will utilize microtunneling, a **trenchless pipe installation method**. As part of this process, microtunneling shafts will be installed at specific locations along Main Street, as indicated on the map below.

Two-way traffic flow and pedestrian access will be maintained on Main Street throughout the course of construction, and **road jogs will be implemented** where necessary to accommodate the shaft construction. Lane or road closures may be required on certain local roads to facilitate construction. Access to local homes, businesses & emergency services will be maintained at all times.

Micro-Tunneling Work

All micro-tunneling shafts along Main St. are complete.

Tunneling work is complete from Shafts #4 to #5, Shafts #4 to #3 and Shafts #2 to #1. Tunnelling work between Shafts #2 and #3 to start week of May 13.

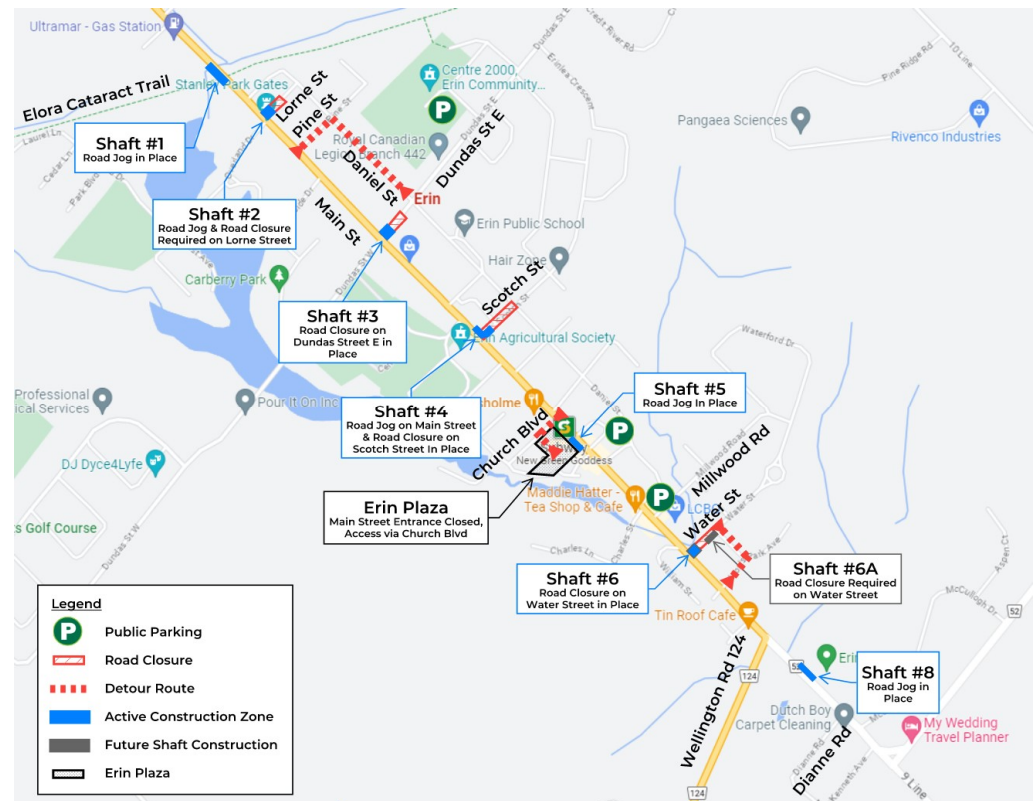
Road widening at the required Shaft locations is complete.

It is anticipated that the micro-tunneling work will be completed in the fall of 2024.

MAIN STREET
BUSINESSES



DURING
CONSTRUCTION

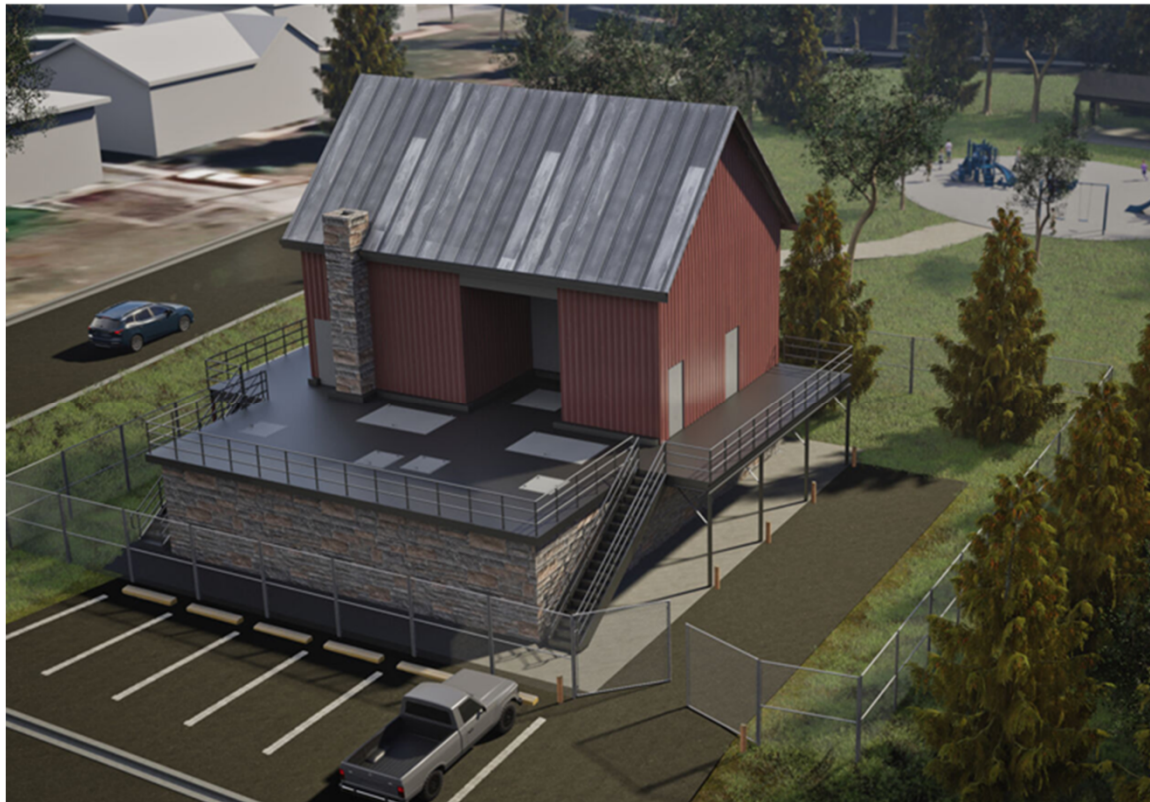


Erin Village Sewage Pumping Station

The Erin Village Sewage Pumping Station, located at the **northeast corner of Lions' Club Park**, will convey wastewater to the Erin Water Resource Recovery Facility. The sewage pumping station has been designed to complement the natural features within the park and will be secured from access by the public.

This contract includes a **back-up emergency generator** located on the west side of Williams Street, just north of March Street.

To complete the work in a safe manner, there will be **restrictions around the Lions' Club Park and generator work areas**. The Town's Contractor will be erecting temporary fencing around the work area; unauthorized access to the fenced area is prohibited.



January 29,
2024

Construction Start

Increased truck traffic, dirt on roads, dust & noise may be experienced

Construction Notices

Construction Notices will be distributed to homes adjacent to the generator site prior to work starting at that location this spring.

The entirety of Lions' Club Park will be used as the construction site.

Fall 2025

Sewage Pumping Station Completion

The Park and generator sites will be restored to original or better condition

Erin Water Resource Recovery Facility

The Erin Water Resource Recovery Facility is located on Wellington Road 52, west of 10th Line. The facility will treat the incoming raw wastewater from the Hillsburgh and Erin Village communities, producing treated effluent that achieves Ontario regulatory objectives and limits. The treated effluent will be discharged to the West Credit River via the effluent sewer and outfall that runs along Wellington Road 52 and Winston Churchill Boulevard.

The facility is designed to produce **one of the strictest discharge requirements in North America** and will include Canada's first municipal effluent cooling system to limit effluent discharge temperatures and ensure the coldwater aquatic habitat of the West Credit River will not be affected.

Construction work is **currently in progress** and is anticipated to be completed in the **spring of 2025** with the outfall to be done this summer.







Thank you for attending

All notices are also posted on the
Town's Project Updates webpage

If you have additional questions,
please contact us at:

 digerin@erin.ca

 (519) 855-4407 ext. 262

 erin.ca

