



TOWN OF ERIN COMMITTEE OF ADJUSTMENT

NOTICE OF PUBLIC HEARING OF APPLICATION FOR MINOR VARIANCE A05/18 *Planning Act, R.S.O. 1990, Chap.P. 13, ss.45(5)*

TAKE NOTICE that an application for minor variance, under the above file number has been submitted to the Committee of Adjustment for the Town of Erin. The Committee will give consideration to the minor variance application on:

Wednesday May 2nd, 2018
Town of Erin Municipal Offices
Council Chambers
5684 Trafalgar Road, Hillsburgh
7:00 p.m.

LOCATION OF THE SUBJECT PROPERTY is legally described as CON 5 W PT LOT 5 PCL D, with a civic address of 9129 Wellington Road 50. The property is approximately 3.87 hectares (9.56 acres) in size and the location is shown on the map below.

THE PURPOSE AND EFFECT OF THE APPLICATION is to provide relief from Zoning By-law 07-67 specifically Section 4.2.3 to construct an accessory building with a height of 5.28 metres (17'4") to the midpoint of the roof. This exceeds the 4.5 metre maximum permitted height by 0.78 metres (2'6").

ORAL OR WRITTEN SUBMISSION

Any person or public body is entitled to attend the public meeting and make written or oral submissions on the proposed variance.

If a person or public body does not make oral submissions at a public meeting or make written submissions to the Town of Erin before the variance is passed, the person or public body is not entitled to appeal the decision of the Council of the Town of Erin to the Local Planning Appeal Tribunal.

If a person or public body does not make oral submissions at a public meeting, or make written submissions to the Town of Erin before the variance is passed, the person or public body may not be added as a party to the hearing of an appeal before the Local Planning Appeal Tribunal unless, in the opinion of the Tribunal, there are reasonable grounds to do so.

NOTICE OF DECISION

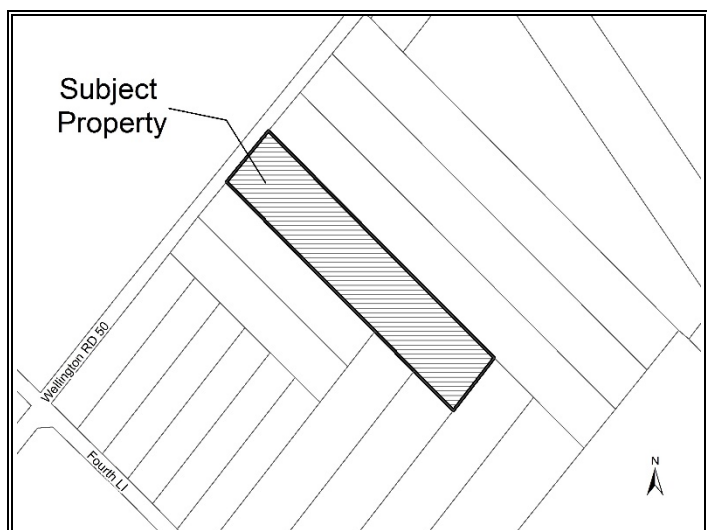
If you wish to be notified of the decision of the Committee of Adjustment for the Town of Erin in respect of this application, you must submit a written request to the Secretary-Treasurer of the Committee of Adjustment for the Town of Erin at the address provided below.

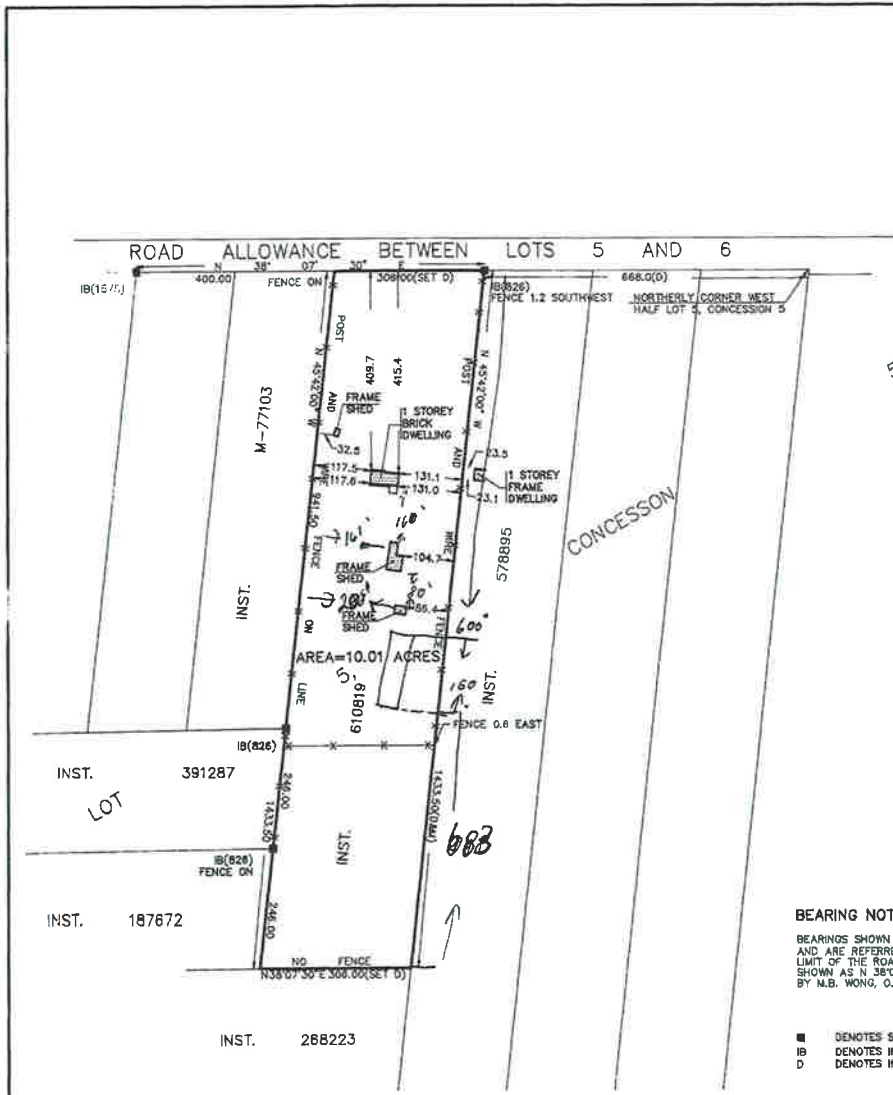
ADDITIONAL INFORMATION regarding this application, including information about appeal rights, is available between 8:30 a.m. and 4:30 p.m. at the Town of Erin Municipal Office.

Dated at the Town of Erin
This 10th day of April, 2018

Lisa Campion, Secretary-Treasurer
Town of Erin
5684 Trafalgar Road
Hillsburgh, ON
N0B 1Z0

P 519.855.4407 X248
F 519.855.4821





PAID
 WITH THANKS
 MAR 15 2018
 AMOUNT
 CORE OF THE TOWN OF ERIN
 PER

RECEIVED
 TOWN OF ERIN
 MAR 15 2018
 BUILDING/PLANNING
 DEPARTMENT

SURVEYOR'S REAL PROPERTY REPORT
 OF PART OF
 LOT 5, CONCESSION 5
 IN THE
 TOWNSHIP OF ERIN
 COUNTY OF WELLINGTON
 A. SKRANDA, O.L.S.
 1992
 SCALE 1 INCH = 200 FEET

BEARING NOTE

BEARINGS SHOWN HEREON ARE ASTRONOMIC
 AND ARE REFERRED TO THE SOUTHEASTERLY
 LIMIT OF THE ROAD ALLOWANCE BETWEEN LOTS 5 AND 6
 SHOWN AS N 38°17'30" E ON A PLAN OF SURVEY
 BY M.B. WONG, O.L.S., DATED JUNE 8, 1987.

- DENOTES SURVEY MONUMENT FOUND
- IB DENOTES IRON BAR
- D DENOTES INST. 610819

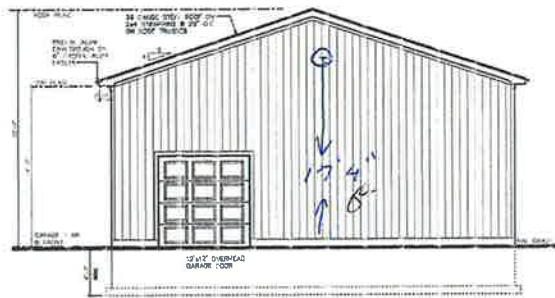
SURVEYOR'S CERTIFICATE

I CERTIFY THAT:
 THE FIELD SURVEY REPRESENTED ON THIS PLAN
 WAS COMPLETED ON THE 17th DAY OF AUGUST, 1992.

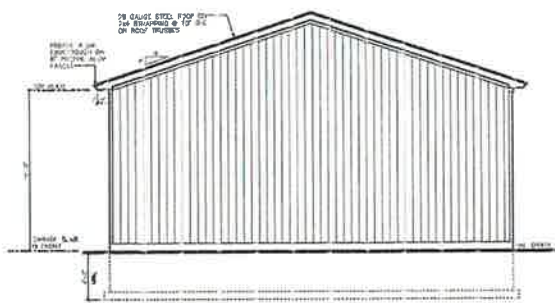
PREPARED FOR S. PATTERSON

DATE Aug 19, 1992
 A. SKRANDA
 ONTARIO LAND SURVEYOR

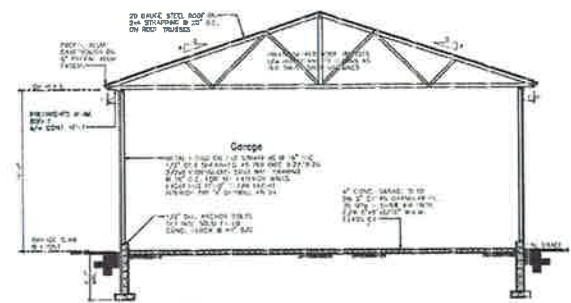
A. SKRANDA SURVEYING LTD.		5053 PROJECT
190 HWY. NO. 7 WEST (UNIT 1) BRAMPTON, ONTARIO L7A 1A2 PHONE: 416-451-1842 (FAX: 451-1845)		



FRONT ELEV.
Scale: 3/8"=1'-0"



REAR ELEV.
Scale: 3/8"=1'-0"



SECTION
Scale: 3/8"=1'-0"

PROJECT NO. 18-001
 DATE: 03/15/18
 DRAWN BY: [Signature]
 CHECKED BY: [Signature]

FOR WALLS & ROOF	
NO. 24	2x4 TRUSSES
NO. 25	2x6 JOISTS
NO. 26	2x8 JOISTS
NO. 27	2x10 JOISTS
NO. 28	2x12 JOISTS
NO. 29	2x14 JOISTS
NO. 30	2x16 JOISTS
NO. 31	2x18 JOISTS
NO. 32	2x20 JOISTS
NO. 33	2x22 JOISTS
NO. 34	2x24 JOISTS
NO. 35	2x26 JOISTS
NO. 36	2x28 JOISTS
NO. 37	2x30 JOISTS
NO. 38	2x32 JOISTS
NO. 39	2x34 JOISTS
NO. 40	2x36 JOISTS
NO. 41	2x38 JOISTS
NO. 42	2x40 JOISTS
NO. 43	2x42 JOISTS
NO. 44	2x44 JOISTS
NO. 45	2x46 JOISTS
NO. 46	2x48 JOISTS
NO. 47	2x50 JOISTS
NO. 48	2x52 JOISTS
NO. 49	2x54 JOISTS
NO. 50	2x56 JOISTS
NO. 51	2x58 JOISTS
NO. 52	2x60 JOISTS
NO. 53	2x62 JOISTS
NO. 54	2x64 JOISTS
NO. 55	2x66 JOISTS
NO. 56	2x68 JOISTS
NO. 57	2x70 JOISTS
NO. 58	2x72 JOISTS
NO. 59	2x74 JOISTS
NO. 60	2x76 JOISTS
NO. 61	2x78 JOISTS
NO. 62	2x80 JOISTS
NO. 63	2x82 JOISTS
NO. 64	2x84 JOISTS
NO. 65	2x86 JOISTS
NO. 66	2x88 JOISTS
NO. 67	2x90 JOISTS
NO. 68	2x92 JOISTS
NO. 69	2x94 JOISTS
NO. 70	2x96 JOISTS
NO. 71	2x98 JOISTS
NO. 72	2x100 JOISTS
NO. 73	2x102 JOISTS
NO. 74	2x104 JOISTS
NO. 75	2x106 JOISTS
NO. 76	2x108 JOISTS
NO. 77	2x110 JOISTS
NO. 78	2x112 JOISTS
NO. 79	2x114 JOISTS
NO. 80	2x116 JOISTS
NO. 81	2x118 JOISTS
NO. 82	2x120 JOISTS
NO. 83	2x122 JOISTS
NO. 84	2x124 JOISTS
NO. 85	2x126 JOISTS
NO. 86	2x128 JOISTS
NO. 87	2x130 JOISTS
NO. 88	2x132 JOISTS
NO. 89	2x134 JOISTS
NO. 90	2x136 JOISTS
NO. 91	2x138 JOISTS
NO. 92	2x140 JOISTS
NO. 93	2x142 JOISTS
NO. 94	2x144 JOISTS
NO. 95	2x146 JOISTS
NO. 96	2x148 JOISTS
NO. 97	2x150 JOISTS
NO. 98	2x152 JOISTS
NO. 99	2x154 JOISTS
NO. 100	2x156 JOISTS
NO. 101	2x158 JOISTS
NO. 102	2x160 JOISTS
NO. 103	2x162 JOISTS
NO. 104	2x164 JOISTS
NO. 105	2x166 JOISTS
NO. 106	2x168 JOISTS
NO. 107	2x170 JOISTS
NO. 108	2x172 JOISTS
NO. 109	2x174 JOISTS
NO. 110	2x176 JOISTS
NO. 111	2x178 JOISTS
NO. 112	2x180 JOISTS
NO. 113	2x182 JOISTS
NO. 114	2x184 JOISTS
NO. 115	2x186 JOISTS
NO. 116	2x188 JOISTS
NO. 117	2x190 JOISTS
NO. 118	2x192 JOISTS
NO. 119	2x194 JOISTS
NO. 120	2x196 JOISTS
NO. 121	2x198 JOISTS
NO. 122	2x200 JOISTS
NO. 123	2x202 JOISTS
NO. 124	2x204 JOISTS
NO. 125	2x206 JOISTS
NO. 126	2x208 JOISTS
NO. 127	2x210 JOISTS
NO. 128	2x212 JOISTS
NO. 129	2x214 JOISTS
NO. 130	2x216 JOISTS
NO. 131	2x218 JOISTS
NO. 132	2x220 JOISTS
NO. 133	2x222 JOISTS
NO. 134	2x224 JOISTS
NO. 135	2x226 JOISTS
NO. 136	2x228 JOISTS
NO. 137	2x230 JOISTS
NO. 138	2x232 JOISTS
NO. 139	2x234 JOISTS
NO. 140	2x236 JOISTS
NO. 141	2x238 JOISTS
NO. 142	2x240 JOISTS
NO. 143	2x242 JOISTS
NO. 144	2x244 JOISTS
NO. 145	2x246 JOISTS
NO. 146	2x248 JOISTS
NO. 147	2x250 JOISTS
NO. 148	2x252 JOISTS
NO. 149	2x254 JOISTS
NO. 150	2x256 JOISTS
NO. 151	2x258 JOISTS
NO. 152	2x260 JOISTS
NO. 153	2x262 JOISTS
NO. 154	2x264 JOISTS
NO. 155	2x266 JOISTS
NO. 156	2x268 JOISTS
NO. 157	2x270 JOISTS
NO. 158	2x272 JOISTS
NO. 159	2x274 JOISTS
NO. 160	2x276 JOISTS
NO. 161	2x278 JOISTS
NO. 162	2x280 JOISTS
NO. 163	2x282 JOISTS
NO. 164	2x284 JOISTS
NO. 165	2x286 JOISTS
NO. 166	2x288 JOISTS
NO. 167	2x290 JOISTS
NO. 168	2x292 JOISTS
NO. 169	2x294 JOISTS
NO. 170	2x296 JOISTS
NO. 171	2x298 JOISTS
NO. 172	2x300 JOISTS
NO. 173	2x302 JOISTS
NO. 174	2x304 JOISTS
NO. 175	2x306 JOISTS
NO. 176	2x308 JOISTS
NO. 177	2x310 JOISTS
NO. 178	2x312 JOISTS
NO. 179	2x314 JOISTS
NO. 180	2x316 JOISTS
NO. 181	2x318 JOISTS
NO. 182	2x320 JOISTS
NO. 183	2x322 JOISTS
NO. 184	2x324 JOISTS
NO. 185	2x326 JOISTS
NO. 186	2x328 JOISTS
NO. 187	2x330 JOISTS
NO. 188	2x332 JOISTS
NO. 189	2x334 JOISTS
NO. 190	2x336 JOISTS
NO. 191	2x338 JOISTS
NO. 192	2x340 JOISTS
NO. 193	2x342 JOISTS
NO. 194	2x344 JOISTS
NO. 195	2x346 JOISTS
NO. 196	2x348 JOISTS
NO. 197	2x350 JOISTS
NO. 198	2x352 JOISTS
NO. 199	2x354 JOISTS
NO. 200	2x356 JOISTS
NO. 201	2x358 JOISTS
NO. 202	2x360 JOISTS
NO. 203	2x362 JOISTS
NO. 204	2x364 JOISTS
NO. 205	2x366 JOISTS
NO. 206	2x368 JOISTS
NO. 207	2x370 JOISTS
NO. 208	2x372 JOISTS
NO. 209	2x374 JOISTS
NO. 210	2x376 JOISTS
NO. 211	2x378 JOISTS
NO. 212	2x380 JOISTS
NO. 213	2x382 JOISTS
NO. 214	2x384 JOISTS
NO. 215	2x386 JOISTS
NO. 216	2x388 JOISTS
NO. 217	2x390 JOISTS
NO. 218	2x392 JOISTS
NO. 219	2x394 JOISTS
NO. 220	2x396 JOISTS
NO. 221	2x398 JOISTS
NO. 222	2x400 JOISTS
NO. 223	2x402 JOISTS
NO. 224	2x404 JOISTS
NO. 225	2x406 JOISTS
NO. 226	2x408 JOISTS
NO. 227	2x410 JOISTS
NO. 228	2x412 JOISTS
NO. 229	2x414 JOISTS
NO. 230	2x416 JOISTS
NO. 231	2x418 JOISTS
NO. 232	2x420 JOISTS
NO. 233	2x422 JOISTS
NO. 234	2x424 JOISTS
NO. 235	2x426 JOISTS
NO. 236	2x428 JOISTS
NO. 237	2x430 JOISTS
NO. 238	2x432 JOISTS
NO. 239	2x434 JOISTS
NO. 240	2x436 JOISTS
NO. 241	2x438 JOISTS
NO. 242	2x440 JOISTS
NO. 243	2x442 JOISTS
NO. 244	2x444 JOISTS
NO. 245	2x446 JOISTS
NO. 246	2x448 JOISTS
NO. 247	2x450 JOISTS
NO. 248	2x452 JOISTS
NO. 249	2x454 JOISTS
NO. 250	2x456 JOISTS
NO. 251	2x458 JOISTS
NO. 252	2x460 JOISTS
NO. 253	2x462 JOISTS
NO. 254	2x464 JOISTS
NO. 255	2x466 JOISTS
NO. 256	2x468 JOISTS
NO. 257	2x470 JOISTS
NO. 258	2x472 JOISTS
NO. 259	2x474 JOISTS
NO. 260	2x476 JOISTS
NO. 261	2x478 JOISTS
NO. 262	2x480 JOISTS
NO. 263	2x482 JOISTS
NO. 264	2x484 JOISTS
NO. 265	2x486 JOISTS
NO. 266	2x488 JOISTS
NO. 267	2x490 JOISTS
NO. 268	2x492 JOISTS
NO. 269	2x494 JOISTS
NO. 270	2x496 JOISTS
NO. 271	2x498 JOISTS
NO. 272	2x500 JOISTS
NO. 273	2x502 JOISTS
NO. 274	2x504 JOISTS
NO. 275	2x506 JOISTS
NO. 276	2x508 JOISTS
NO. 277	2x510 JOISTS
NO. 278	2x512 JOISTS
NO. 279	2x514 JOISTS
NO. 280	2x516 JOISTS
NO. 281	2x518 JOISTS
NO. 282	2x520 JOISTS
NO. 283	2x522 JOISTS
NO. 284	2x524 JOISTS
NO. 285	2x526 JOISTS
NO. 286	2x528 JOISTS
NO. 287	2x530 JOISTS
NO. 288	2x532 JOISTS
NO. 289	2x534 JOISTS
NO. 290	2x536 JOISTS
NO. 291	2x538 JOISTS
NO. 292	2x540 JOISTS
NO. 293	2x542 JOISTS
NO. 294	2x544 JOISTS
NO. 295	2x546 JOISTS
NO. 296	2x548 JOISTS
NO. 297	2x550 JOISTS
NO. 298	2x552 JOISTS
NO. 299	2x554 JOISTS
NO. 300	2x556 JOISTS
NO. 301	2x558 JOISTS
NO. 302	2x560 JOISTS
NO. 303	2x562 JOISTS
NO. 304	2x564 JOISTS
NO. 305	2x566 JOISTS
NO. 306	2x568 JOISTS
NO. 307	2x570 JOISTS
NO. 308	2x572 JOISTS
NO. 309	2x574 JOISTS
NO. 310	2x576 JOISTS
NO. 311	2x578 JOISTS
NO. 312	2x580 JOISTS
NO. 313	2x582 JOISTS
NO. 314	2x584 JOISTS
NO. 315	2x586 JOISTS
NO. 316	2x588 JOISTS
NO. 317	2x590 JOISTS
NO. 318	2x592 JOISTS
NO. 319	2x594 JOISTS
NO. 320	2x596 JOISTS
NO. 321	2x598 JOISTS
NO. 322	2x600 JOISTS
NO. 323	2x602 JOISTS
NO. 324	2x604 JOISTS
NO. 325	2x606 JOISTS
NO. 326	2x608 JOISTS
NO. 327	2x610 JOISTS
NO. 328	2x612 JOISTS
NO. 329	2x614 JOISTS
NO. 330	2x616 JOISTS
NO. 331	2x618 JOISTS
NO. 332	2x620 JOISTS
NO. 333	2x622 JOISTS
NO. 334	2x624 JOISTS
NO. 335	2x626 JOISTS
NO. 336	2x628 JOISTS
NO. 337	2x630 JOISTS
NO. 338	2x632 JOISTS
NO. 339	2x634 JOISTS
NO. 340	2x636 JOISTS
NO. 341	2x638 JOISTS
NO. 342	2x640 JOISTS
NO. 343	2x642 JOISTS
NO. 344	2x644 JOISTS
NO. 345	2x646 JOISTS
NO. 346	2x648 JOISTS
NO. 347	2x650 JOISTS
NO. 348	2x652 JOISTS
NO. 349	2x654 JOISTS
NO. 350	2x656 JOISTS
NO. 351	2x658 JOISTS
NO. 352	2x660 JOISTS
NO. 353	2x662 JOISTS
NO. 354	2x664 JOISTS
NO. 355	2x666 JOISTS
NO. 356	2x668 JOISTS
NO. 357	2x670 JOISTS
NO. 358	2x672 JOISTS
NO. 359	2x674 JOISTS
NO. 360	2x676 JOISTS
NO. 361	2x678 JOISTS
NO. 362	2x680 JOISTS
NO. 363	2x682 JOISTS
NO. 364	2x684 JOISTS
NO. 365	2x686 JOISTS
NO. 366	2x688 JOISTS
NO. 367	2x690 JOISTS
NO. 368	2x692 JOISTS
NO. 369	2x694 JOISTS
NO. 370	2x696 JOISTS
NO. 371	2x698 JOISTS
NO. 372	2x700 JOISTS
NO. 373	2x702 JOISTS
NO. 374	2x704 JOISTS
NO. 375	2x706 JOISTS
NO. 376	2x708 JOISTS
NO. 377	2x710 JOISTS
NO. 378	2x712 JOISTS
NO. 379	2x714 JOISTS
NO. 380	2x716 JOISTS
NO. 381	2x718 JOISTS
NO. 382	2x720 JOISTS
NO. 383	2x722 JOISTS
NO. 384	2x724 JOISTS
NO. 385	2x726 JOISTS
NO. 386	2x728 JOISTS
NO. 387	2x730 JOISTS
NO. 388	2x732 JOISTS
NO. 389	2x734 JOISTS
NO. 390	2x736 JOISTS
NO. 391	2x738 JOISTS
NO. 392	2x740 JOISTS
NO. 393	2x742 JOISTS
NO. 394	2x744 JOISTS
NO. 395	2x746 JOISTS
NO. 396	2x748 JOISTS