

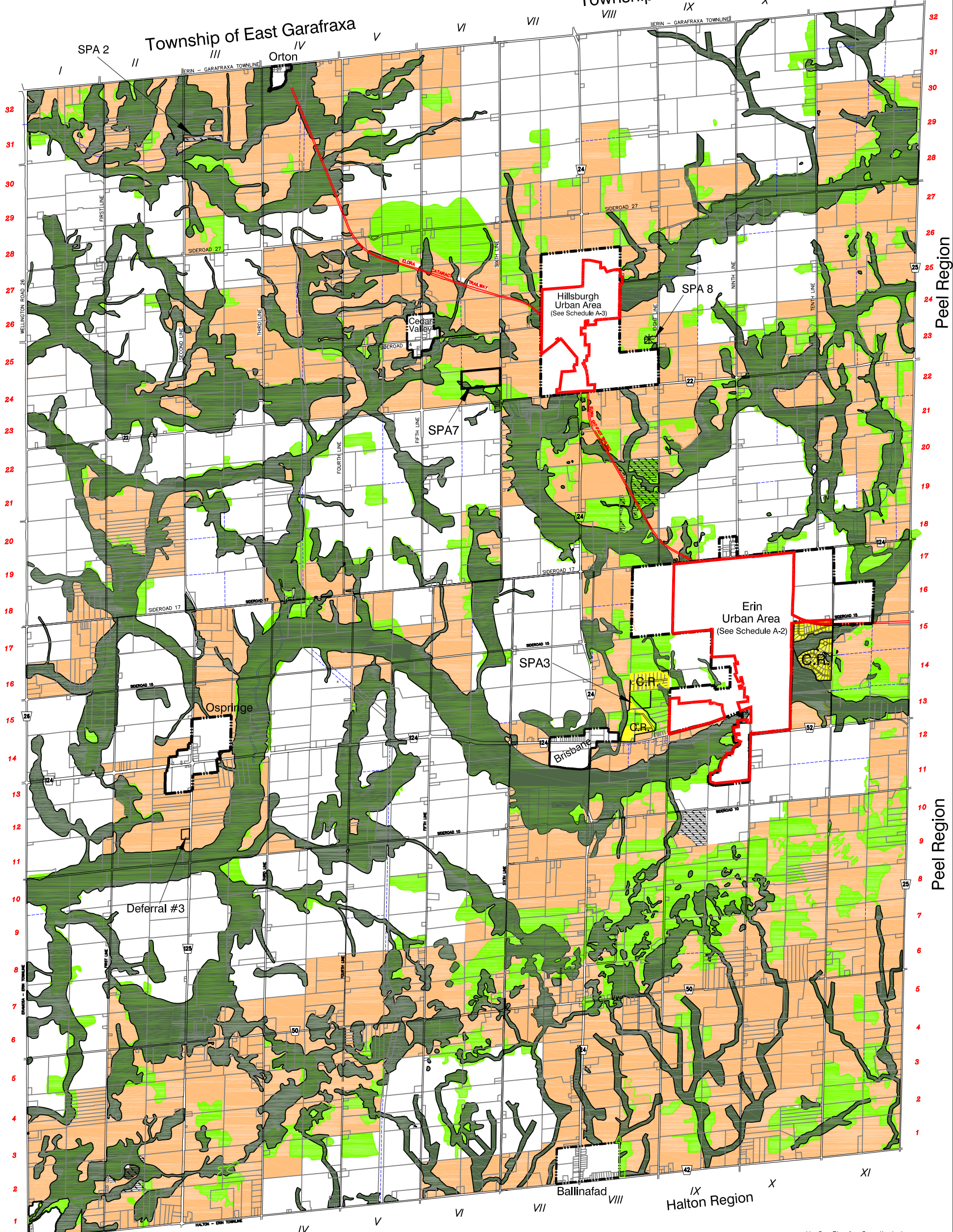
Town of Erin Official Plan

MODIFIED SCHEDULE A-1

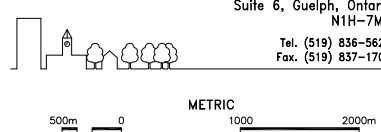


Township of Guelph-Eramosa

Township of East Garafraxa



J.L. Cox Planning Consultants Inc.
 Urban And Rural Planning Services
 350 Speedvale Avenue West
 Suite 6, Guelph, Ontario
 N1H-7M7
 Tel. (519) 836-5622
 Fax. (519) 837-1701



- Prime Agricultural
- Secondary Agricultural
- Core Greenlands
- Greenlands
- Recreational
- Former Landfill Site
- C.R. Country Residential
- Built Boundary

SOURCE : J.L. Cox Planning Consultants Inc.
 : Erin Township Assessment Mapping
 : County of Wellington Planning Dept.
 : Produced using information provided
 by the Ministry of Natural Resources
 Copyright © Queen's Printer, 1997.
 : Grand River Conservation Authority and
 Credit Valley Conservation Authority

NOTE:
 The rural portion of the Town of Erin is also subject to the following
 designations in the County of Wellington Official Plan: Earth Science
 Provincial ANSI, Mineral Aggregate Area, Everton Water Management
 Protection Area.

MODIFIED: February 27, 2012.
 Schedule A-1 - Amended Town of Erin OP.dwg