

TOWN OF ERIN HERITAGE INVENTORY

Date: Feb. 16/04

RECORDER NAME: Robert Sherritt

ADDRESS: 50 Main St. Erin Village, Ont. LOT/CON

(Fire # & Line) \_\_\_\_\_

CURRENT USE Retail - Tintagels

CONSTRUCTION DATE Firm Est. 1895  
(Emphasis on properties prior to 1930)

MATERIAL(S) Red Brick

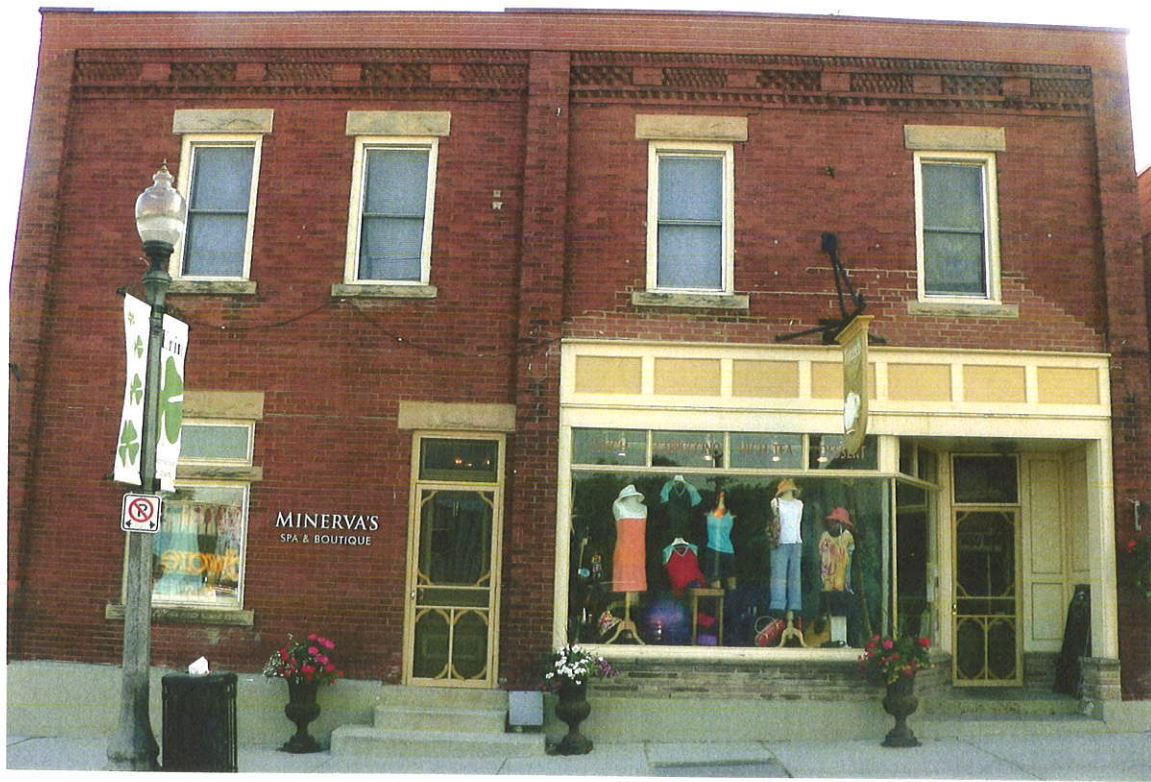
STYLE Semi Detached double-related

STOREYS 2 Storey \_\_\_\_\_

OUTBUILDINGS No \_\_\_\_\_

FEATURES OF NOTE Interesting brick detail, second storey top.  
Window lintels are rock faced. Two storey bay window south side. Roof flat.

Adopted 19/1/2004



MINERVA'S  
SPA & BOUTIQUE

NO PARKING

SLOW